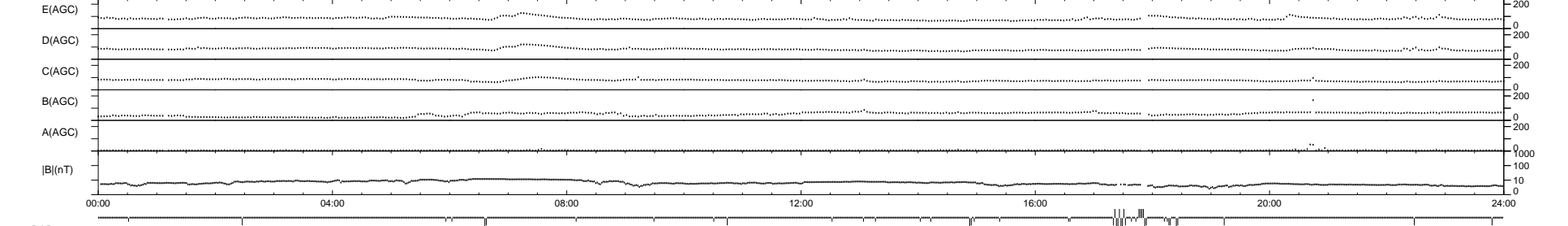
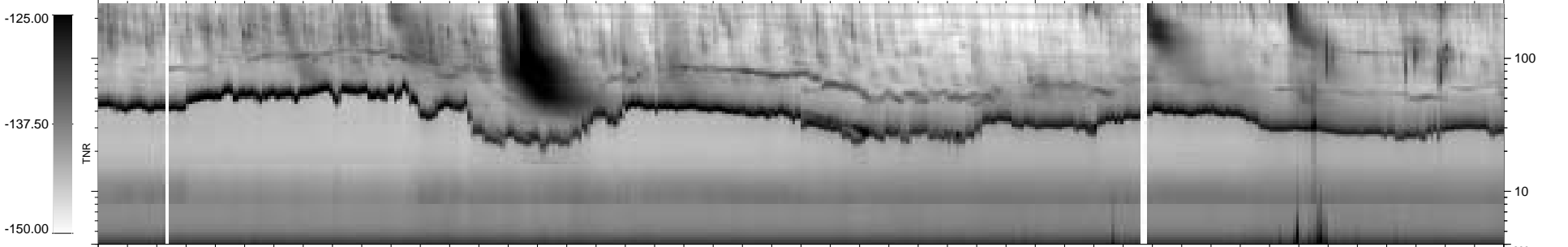
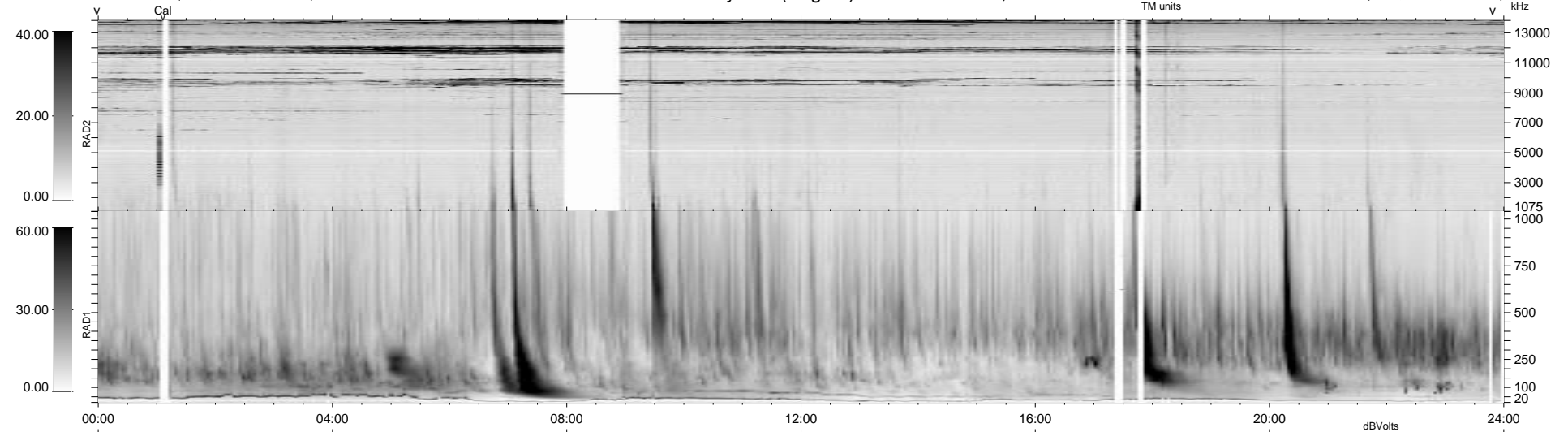


40 bad + 892 good MF/939MF projected (94%) - 7 missing MFs
 Avg interval = 180 secs
 Re = 66.82 (63.98, -19.10, -2.52 GSE)

1.7d VMS-SunOS LZ version = v01

WIND/WAVES Summary Plot (Page 1) for 29-JUL-1998, DOY = 210

DAILY Tue Sep 16, 2008
 Re = 74.44 (72.68, -15.86, -2.80 GSE)



RAD2 Antenna Ey
 Mode LIN(1) FIX(157) LIN(1)
 SUM/SEP SUM SEP SUM
 Toggle OFF
 RAD1 Antenna Ex
 Mode LIS(2,3)
 SUM/SEP SUM
 Toggle OFF
 TNR Antenna ExEy
 Mode A-32
 Sweep ABCDE