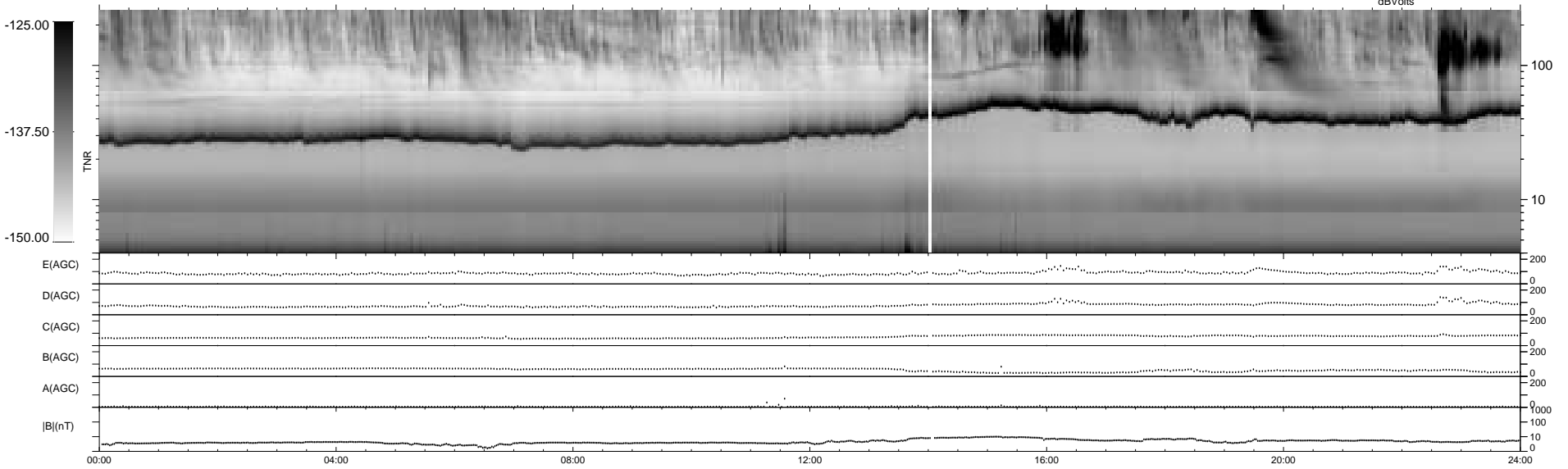
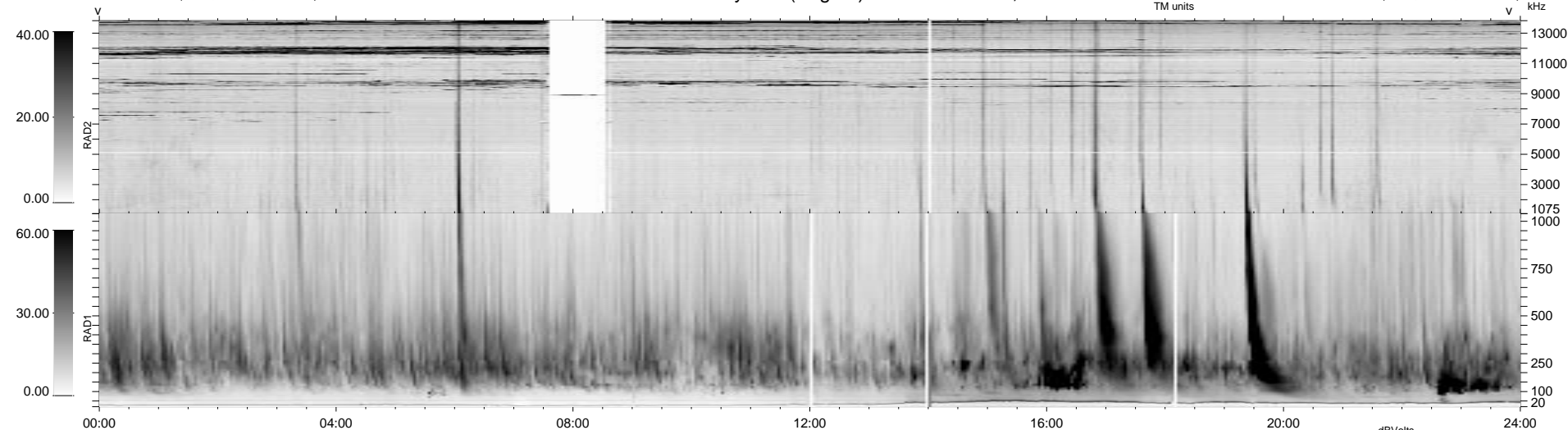


19 bad + 920 good MF/939MF projected (97%) - 0 missing MFs
 Avg interval = 180 secs
 Re = 57.29 (52.88, -21.94, -2.15 GSE)

1.7d VMS-SunOS LZ version = v01

WIND/WAVES Summary Plot (Page 1) for 28-JUL-1998, DOY = 209

DAILY Tue Sep 16, 2008
 Re = 66.76 (63.91, -19.12, -2.52 GSE)



RAD2
 Antenna Ey
 Mode LIN(1) FIX(157) LIN(1)
 SUM/SEP SUMSEP. SUM.
 Toggle OFF

RAD1
 Antenna Ex
 Mode LIS(2,3)
 SUM/SEP SUM
 Toggle OFF

TNR
 Antenna ExEy
 Mode A-32
 Sweep ABCDE