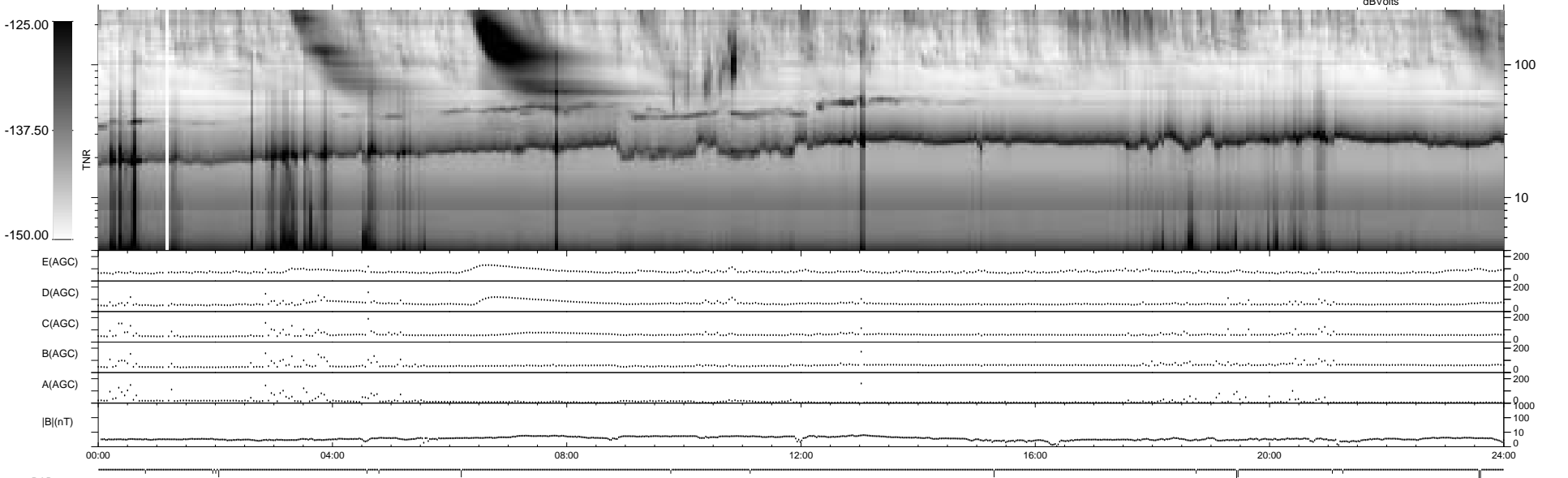
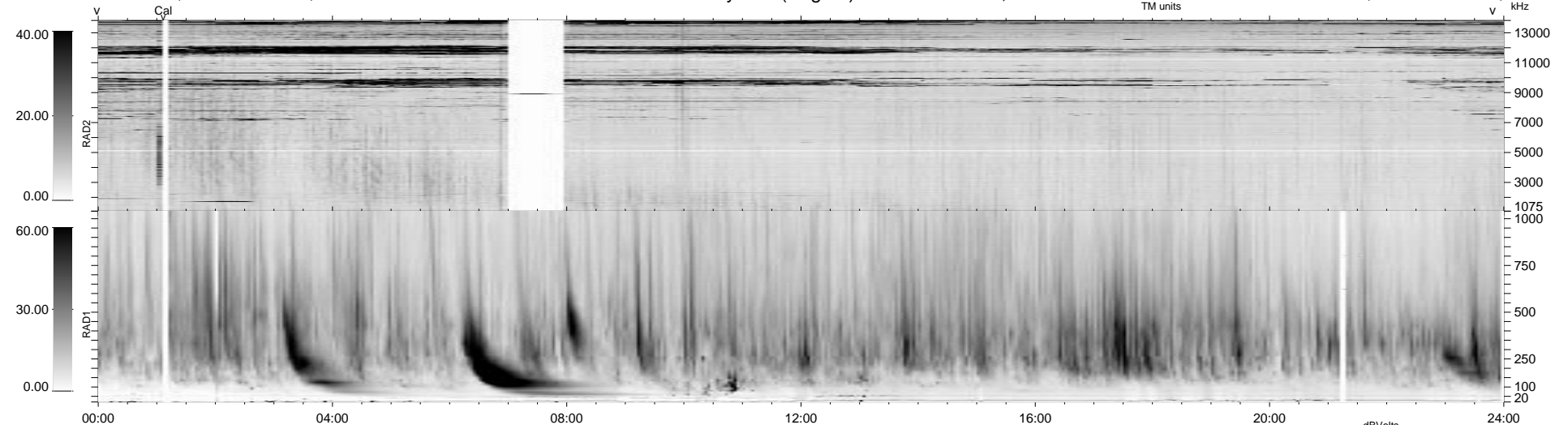


17 bad + 922 good MF/939MF projected (98%) - 0 missing MFs
 Avg interval = 180 secs
 Re = 45.37 (38.59, -23.79, -1.64 GSE)

1.7d VMS-SunOS LZ version = v01
 DAILY Tue Sep 16, 2008
 Re = 57.22 (52.79, -21.96, -2.14 GSE)

WIND/WAVES Summary Plot (Page 1) for 27-JUL-1998, DOY = 208



```

RAD2
Antenna Ey .....
Mode LIN(1) ..... FIX(157) LIN(1) .....
SUM/SEP SUM ..... SEP ..... SUM .....
Toggle OFF .....

RAD1
Antenna Ex .....
Mode LIS(2,3) .....
SUM/SEP SUM .....
Toggle OFF .....

TNR
Antenna ExEy .....
Mode A-32 .....
Sweep ABCDE .....
  
```