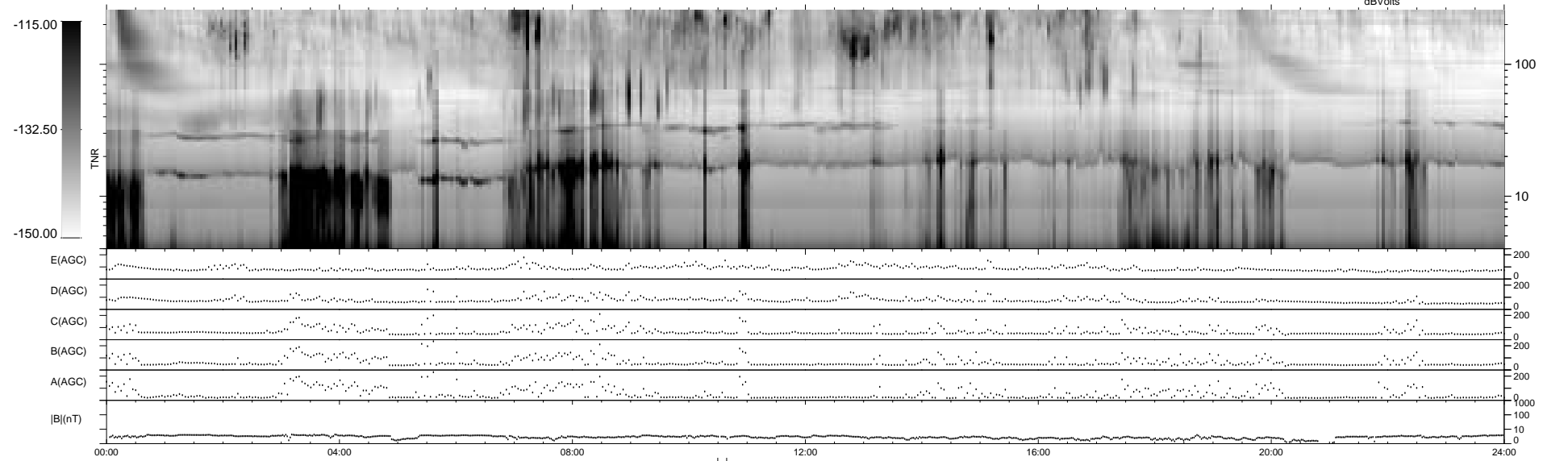
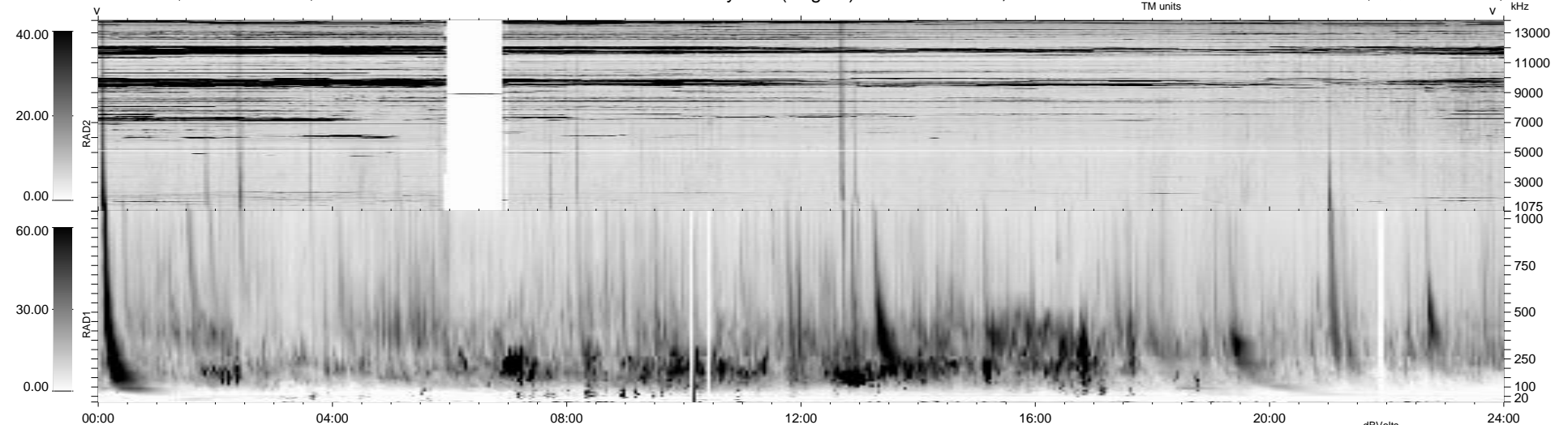


29 bad + 908 good MF/939MF projected (96%) - 2 missing MFs  
 Avg interval = 180 secs  
 Re = - 30.07 (19.44, -22.92, -0.92 GSE)

1.7d VMS-SunOS LZ version = v01  
 DAILY Tue Sep 16, 2008  
 Re = 45.28 (38.48, -23.80, -1.63 GSE)

WIND/WAVES Summary Plot (Page 1) for 26-JUL-1998, DOY = 207



RAD2  
 Antenna Ey  
 Mode LIN(1) . . . . . FIX(157) . . . . . LIN(1)  
 SUM/SEP SUM . . . . . SEP . . . . . SUM  
 Toggle OFF . . . . .

RAD1  
 Antenna Ex  
 Mode LIS(2,3)  
 SUM/SEP SUM  
 Toggle OFF

TNR  
 Antenna ExEy  
 Mode A-32  
 Sweep ABCDE