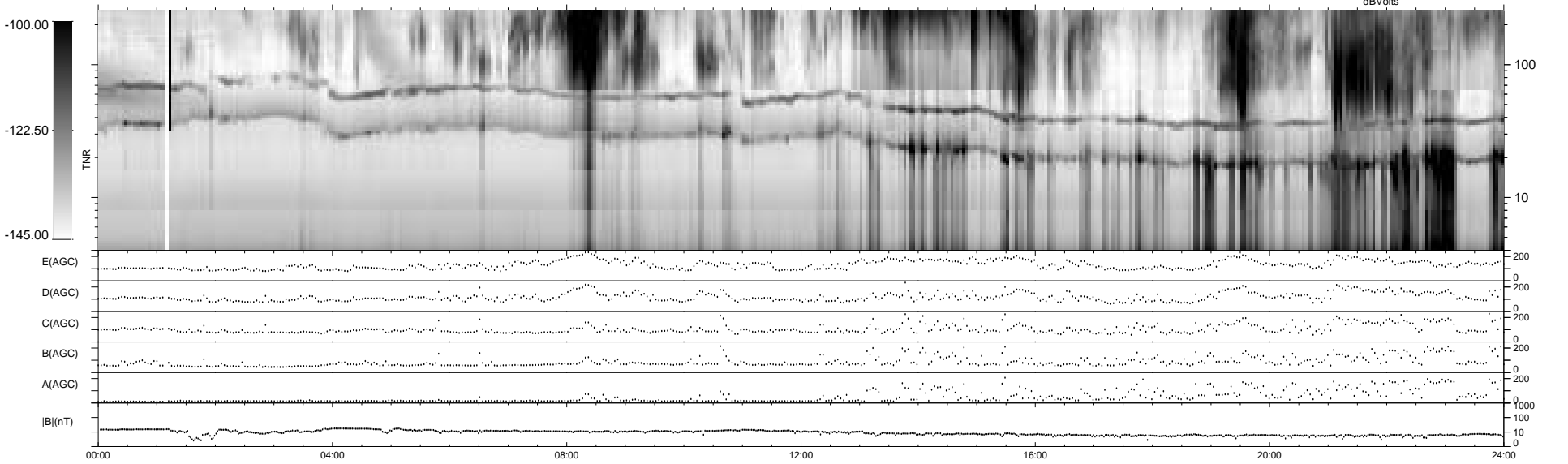
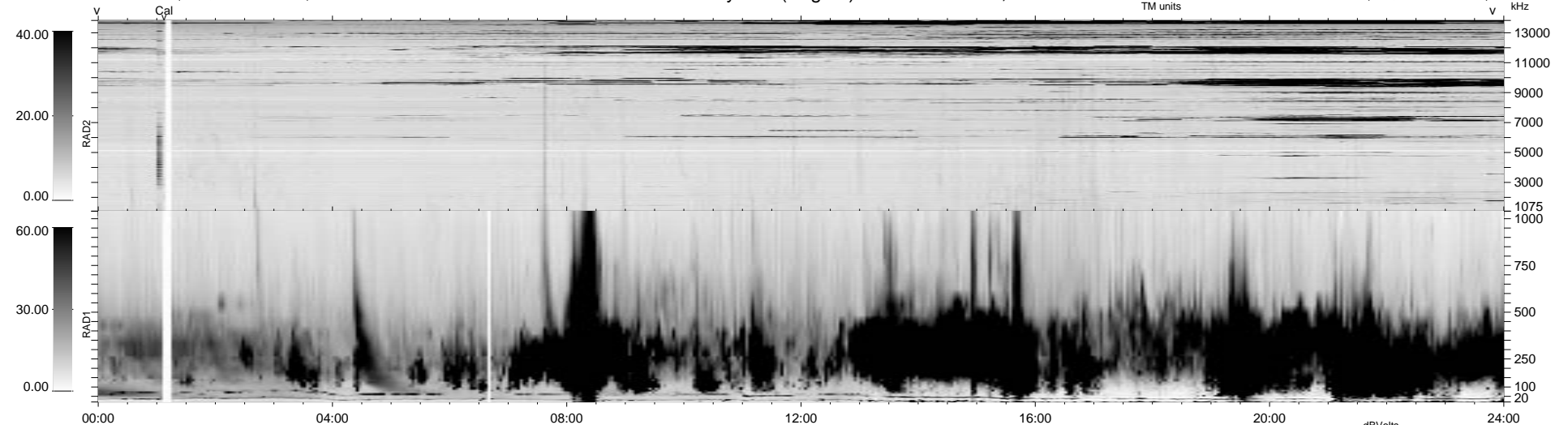


15 bad + 925 good MF/940MF projected (98%) - 0 missing MFs  
 Avg interval = 180 secs  
 Re = - 40.49 (19.24, 35.63, -0.47 GSE)

1.7d VMS-SunOS LZ version = v01

WIND/WAVES Summary Plot (Page 1) for 23-JUL-1998, DOY = 204

DAILY Tue Sep 16, 2008  
 Re = 23.82 (1.18, 23.79, 0.13 GSE)



RAD2  
 Antenna Ey  
 Mode LIN(1)  
 SUM/SEP SUM  
 Toggle OFF

RAD1  
 Antenna Ex  
 Mode LIS(2,3)  
 SUM/SEP SUM  
 Toggle OFF

TNR  
 Antenna ExEy  
 Mode A-32  
 Sweep ABCDE