

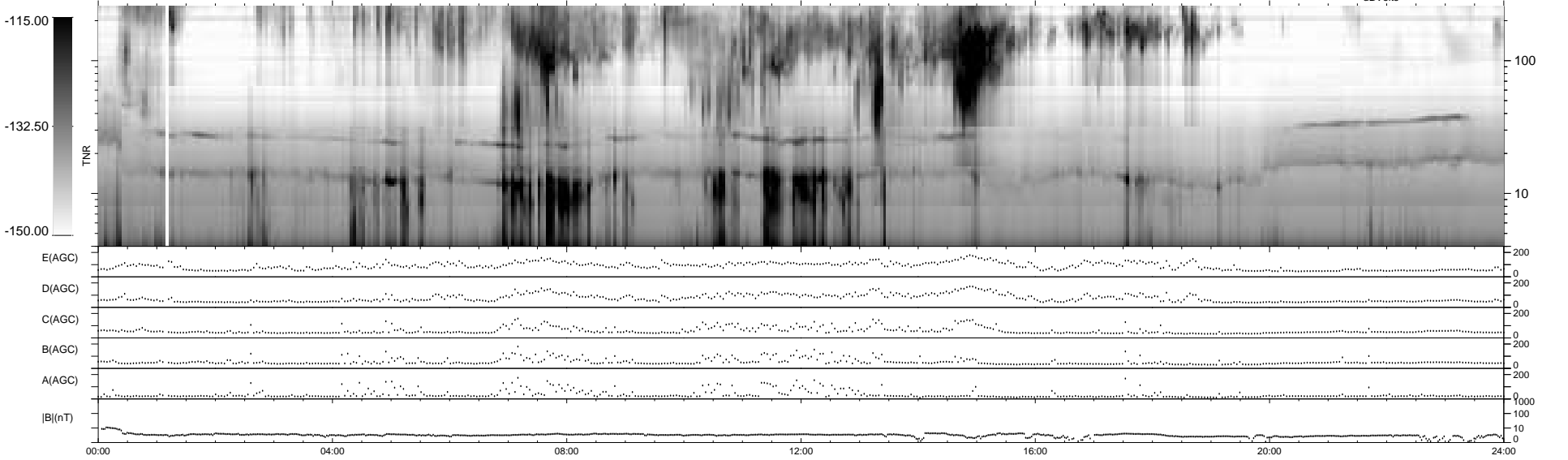
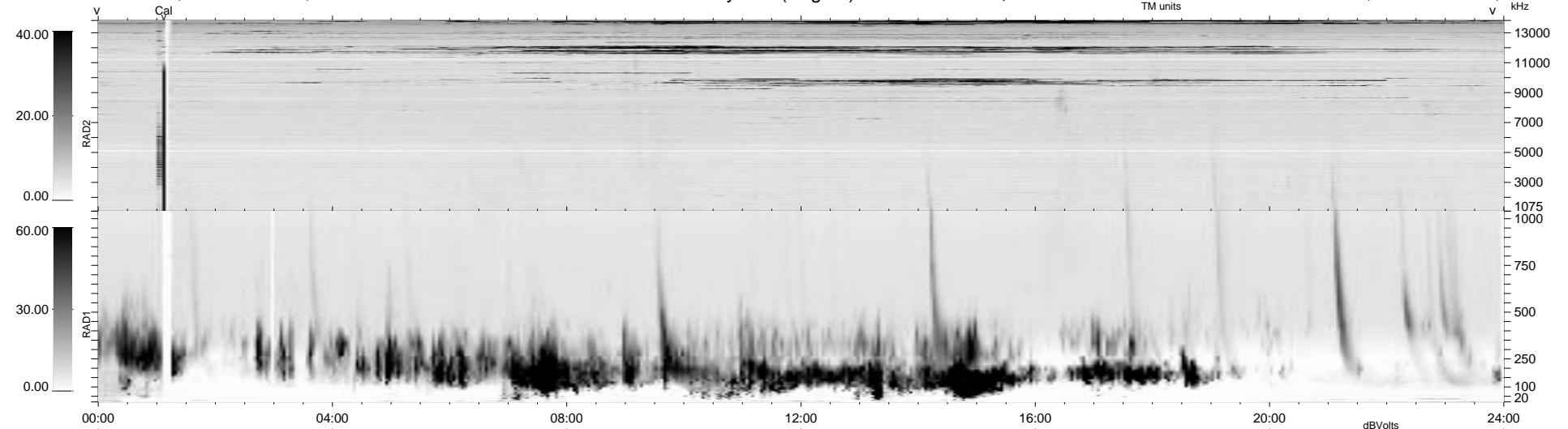
18 bad + 921 good MF/939MF projected (98%) - 0 missing MFs  
 Avg interval = 180 secs  
 Re = - 87.29 (75.96, 42.92, -2.69 GSE)

1.7d VMS-SunOS

LZ version = v01

WIND/WAVES Summary Plot (Page 1) for 17-JUL-1998, DOY = 198

DAILY Tue Sep 16, 2008  
 Re = 83.48 (70.67, 44.36, -2.47 GSE)



RAD2  
 Antenna Ey .....  
 Mode LIN(1) .....  
 SUM/SEP SUM .....  
 Toggle OFF .....  
 RAD1  
 Antenna Ex .....  
 Mode LIS(2,3) .....  
 SUM/SEP SUM .....  
 Toggle OFF .....  
 TNR  
 Antenna ExEy .....  
 Mode A-32 .....  
 Sweep ABCDE .....