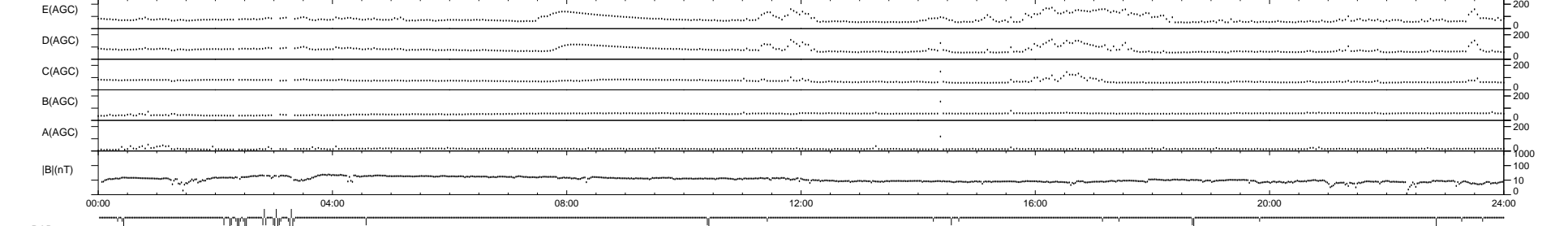
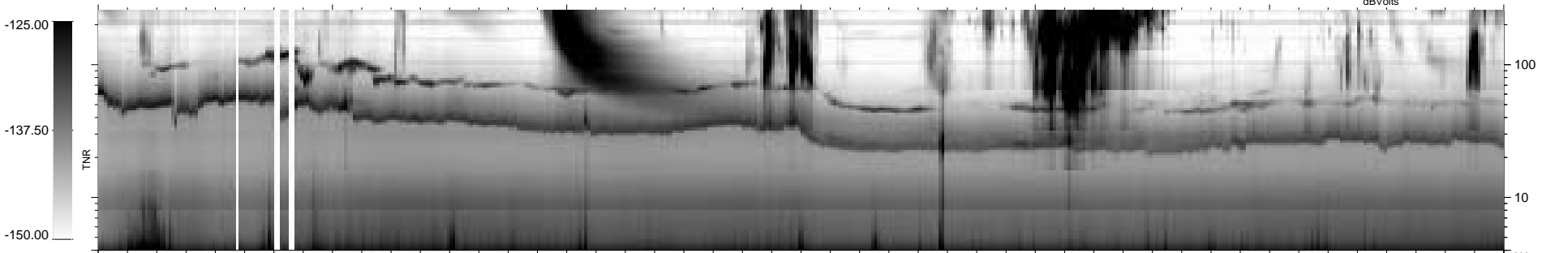
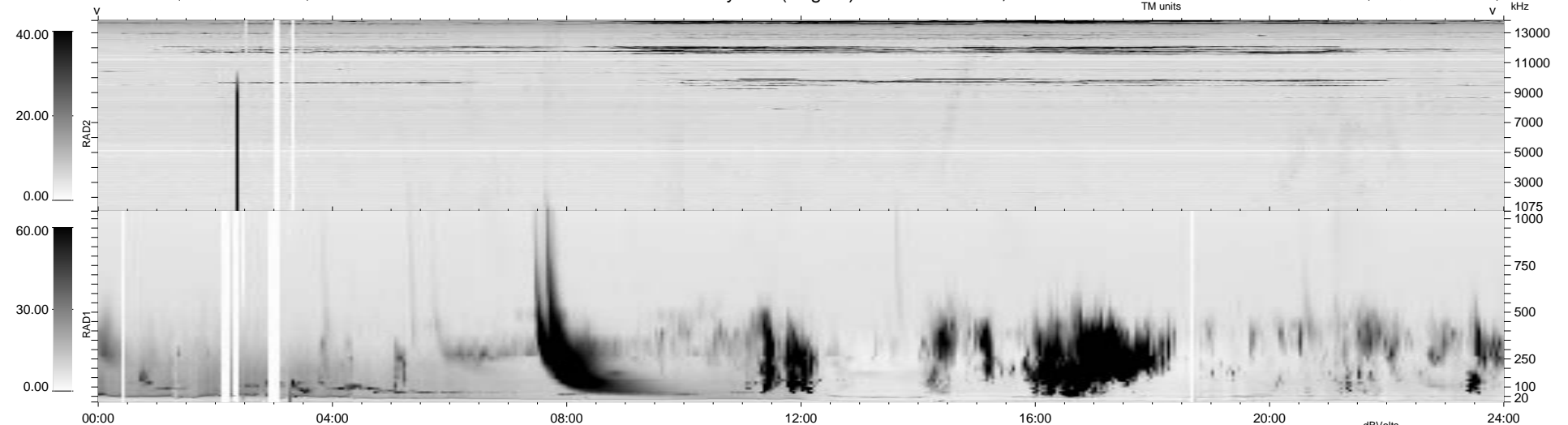


39 bad + 897 good MF/939MF projected (95%) - 3 missing MFs
 Avg interval = 180 secs
 Re = - 89.99 (80.09, 40.93, -2.86 GSE)

1.7d VMS-SunOS LZ version = v01
 DAILY Tue Sep 16, 2008
 Re = 87.31 (75.99, 42.91, -2.69 GSE)

WIND/WAVES Summary Plot (Page 1) for 16-JUL-1998, DOY = 197



RAD2
 Antenna Ey
 Mode LIN(1)
 SUM/SEP SUM
 Toggle OFF

RAD1
 Antenna Ex
 Mode LIS(2,3)
 SUM/SEP SUM
 Toggle OFF

TNR
 Antenna ExEy
 Mode A-32
 Sweep ABCDE