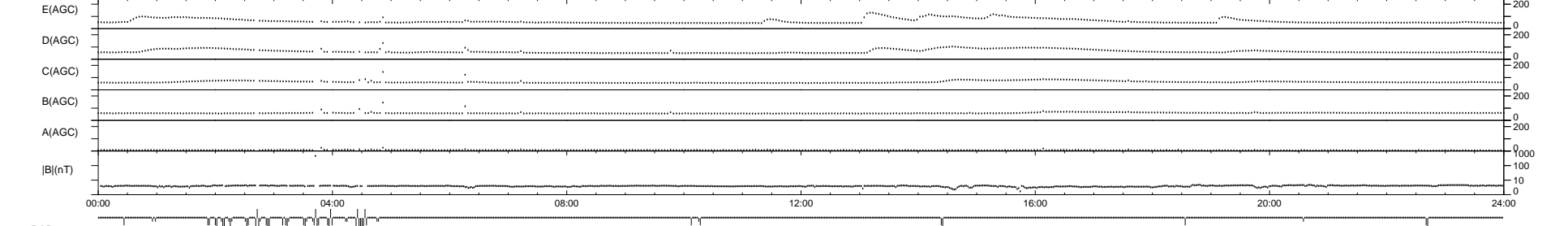
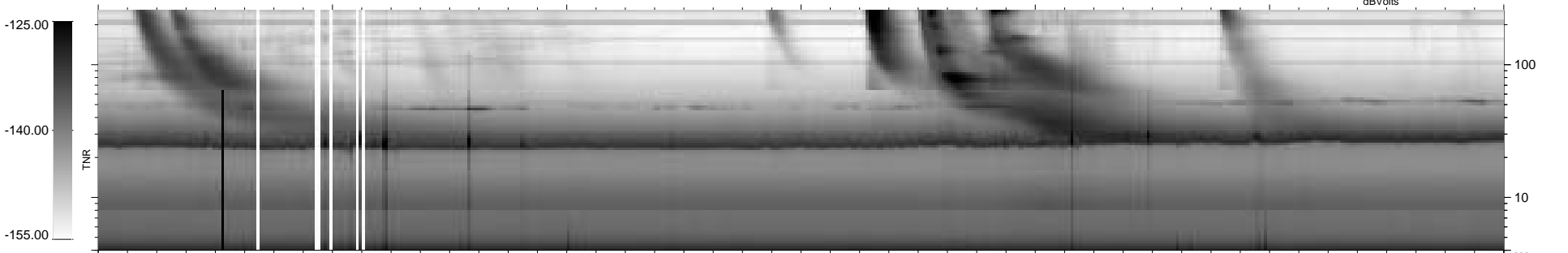
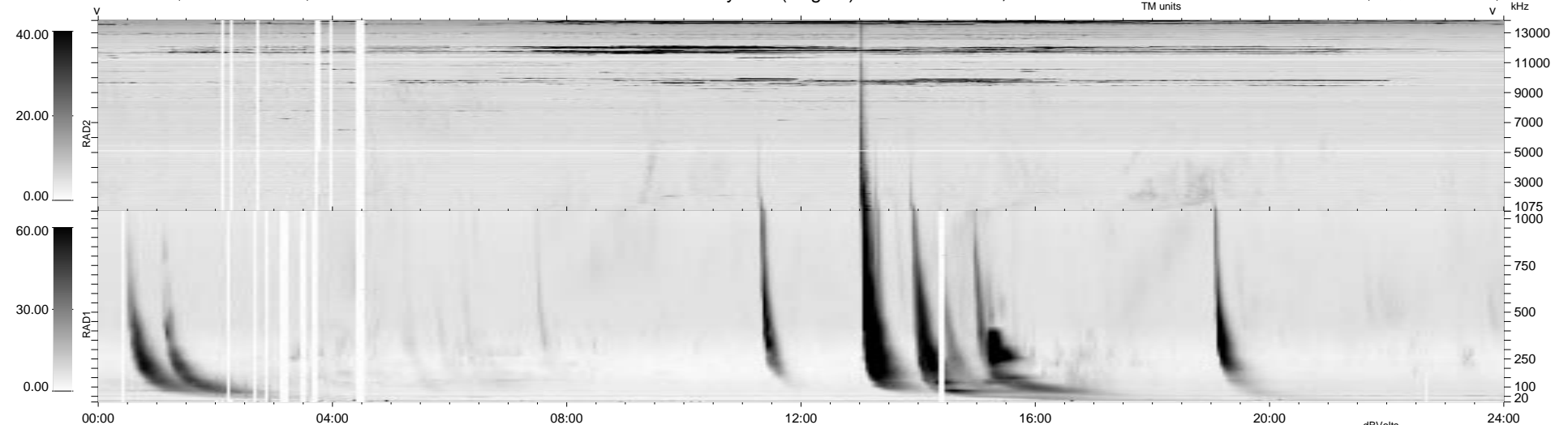


55 bad + 879 good MF/939MF projected (93%) - 5 missing MFs  
 Avg interval = 180 secs  
 Re = 92.21 (85.05, 35.49, -3.06 GSE)

1.7d VMS-SunOS LZ version = v01  
 DAILY Tue Sep 16, 2008  
 Re = 91.62 (83.13, 38.42, -2.98 GSE)

WIND/WAVES Summary Plot (Page 1) for 14-JUL-1998, DOY = 195



RAD2  
 Antenna Ey  
 Mode LIN(1)  
 SUM/SEP SUM  
 Toggle OFF

RAD1  
 Antenna Ex  
 Mode LIS(2,3)  
 SUM/SEP SUM  
 Toggle OFF

TNR  
 Antenna ExEy  
 Mode A-32  
 Sweep ABCDE