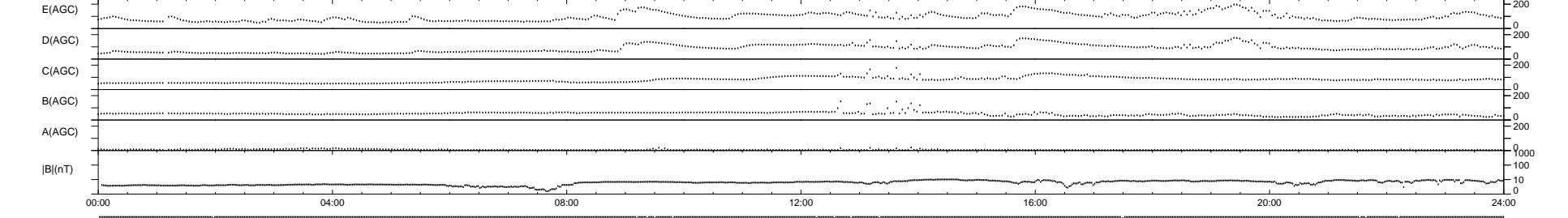
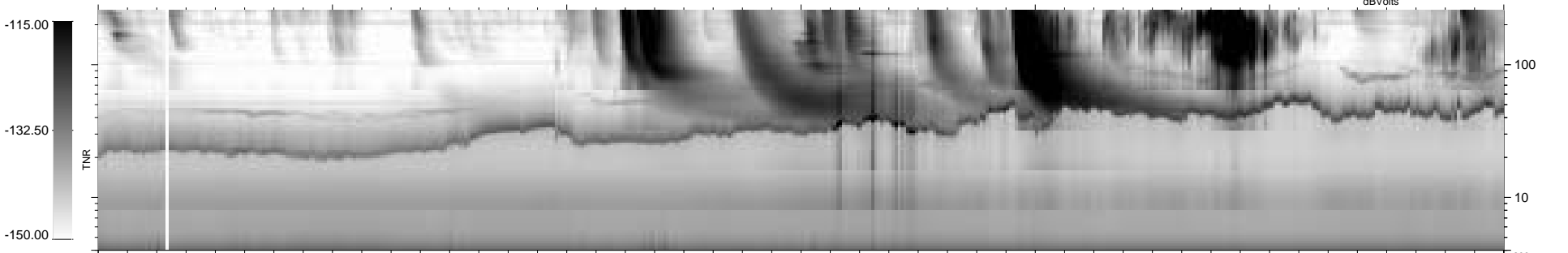
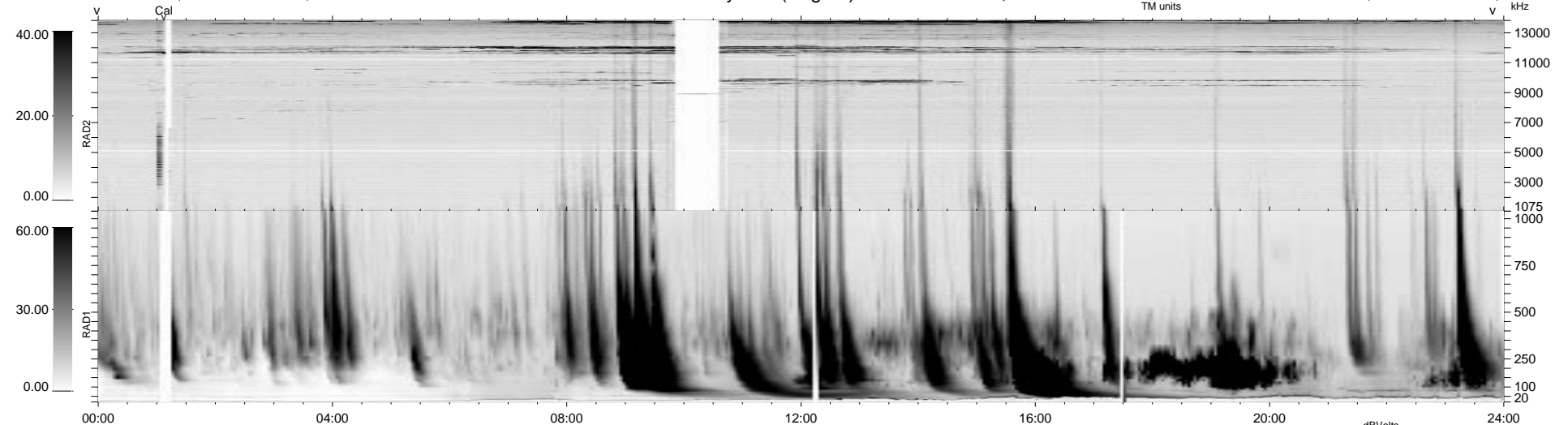


14 bad + 925 good MF/939MF projected (98%) - 0 missing MFs
 Avg interval = 180 secs
 Re = 79.60 (78.31, 14.04, -2.72 GSE)

1.7d VMS-SunOS LZ version = v01
 DAILY Tue Sep 16, 2008
 Re = 84.31 (82.04, 19.21, -2.89 GSE)

WIND/WAVES Summary Plot (Page 1) for 09-JUL-1998, DOY = 190



```

RAD2
Antenna Ey .....
Mode LIN(1) .....
SUM/SEP SUM ..... FX(157), LIN(1)
Toggle OFF ..... SEP ..... SLIM .....

RAD1
Antenna Ex .....
Mode LIS(2,3) .....
SUM/SEP SUM .....
Toggle OFF .....

TNR
Antenna ExEy .....
Mode A-32 .....
Sweep ABCDE .....
  
```