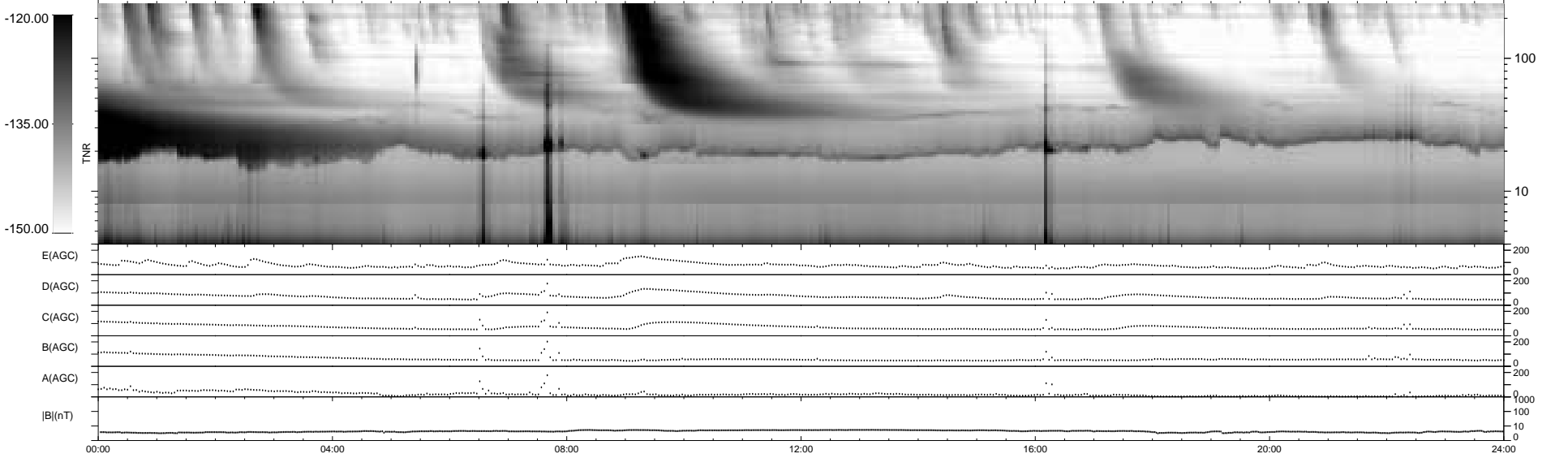
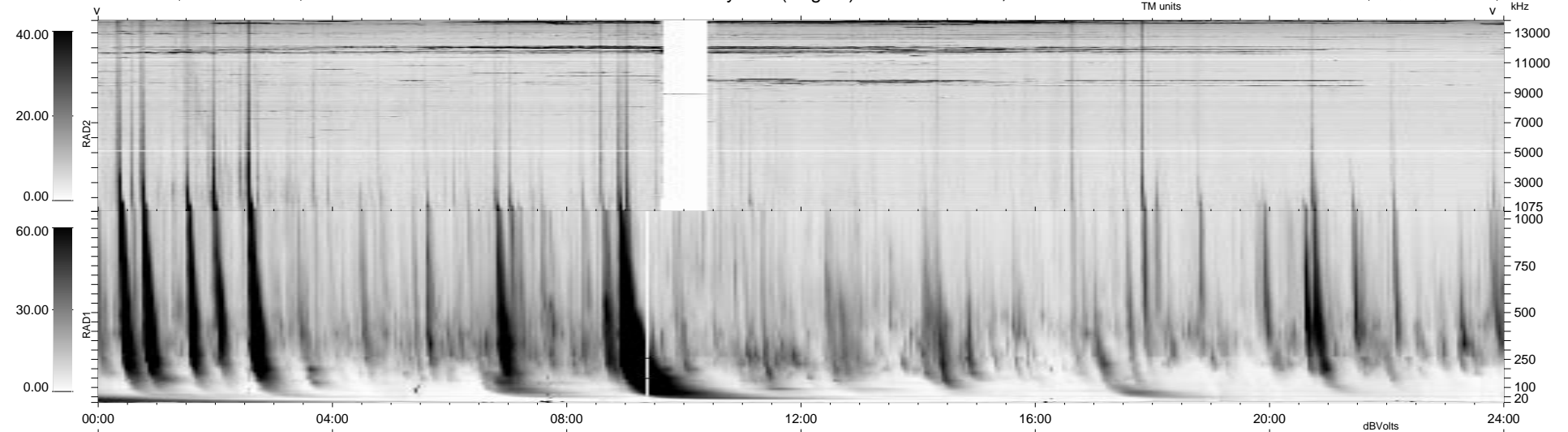


8 bad + 932 good MF/940MF projected (99%) - 0 missing MFs
 Avg interval = 180 secs
 Re = 73.56 (73.04, 8.37, -2.49 GSE)

1.7d VMS-SunOS LZ version = v01

WIND/WAVES Summary Plot (Page 1) for 08-JUL-1998, DOY = 189

DAILY Tue Sep 16, 2008
 Re = 79.57 (78.28, 14.01, -2.72 GSE)



```

RAD2
Antenna Ey .....
Mode LIN(1) .....
SUM/SEP SUM .....
Toggle OFF .....
RAD1
Antenna Ex .....
Mode LIS(2,3) .....
SUM/SEP SUM .....
Toggle OFF .....
TNR
Antenna ExEy .....
Mode A-32 .....
Sweep ABCDE .....

```