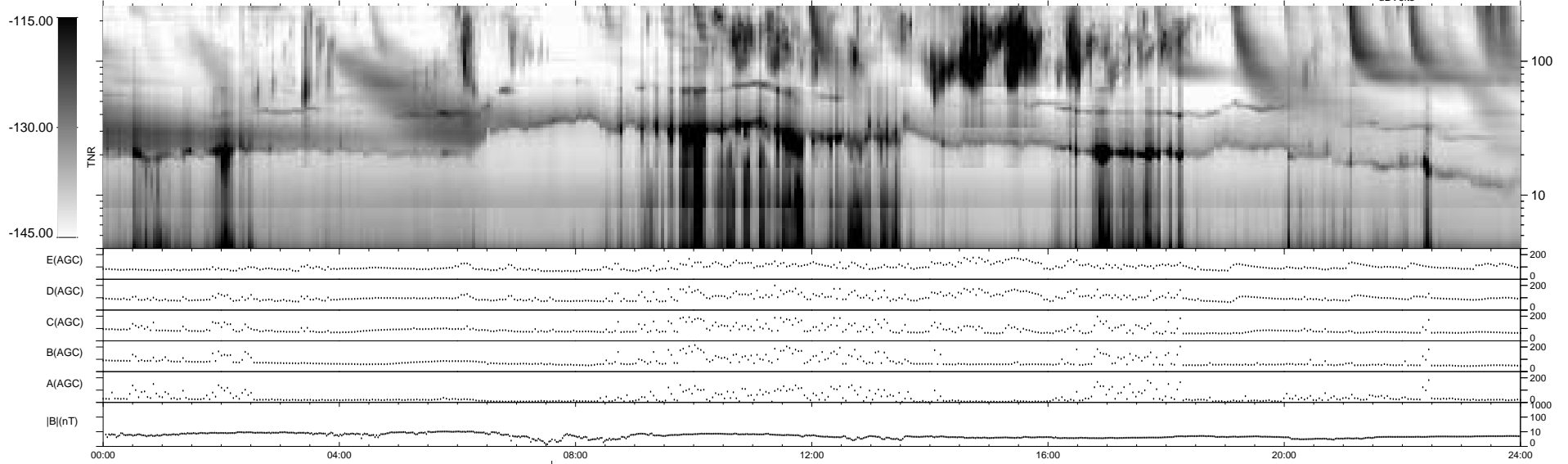
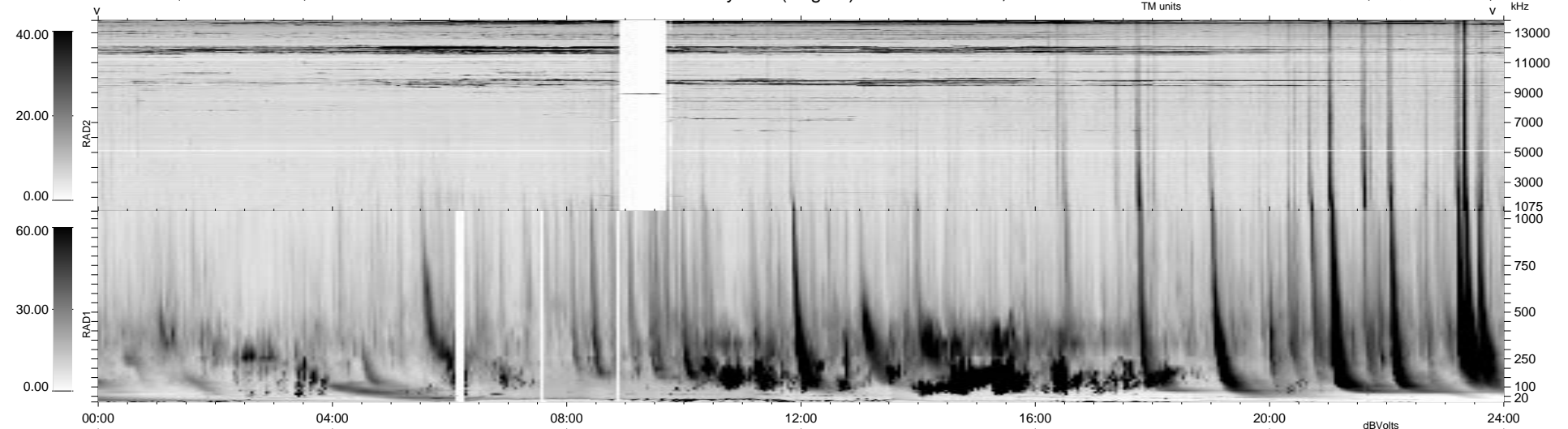


17 bad + 921 good MF/939MF projected (98%) - 1 missing MF  
 Avg interval = 180 secs  
 Re = - 56.66 (56.47, -4.25, -1.80 GSE)

1.7d VMS-SunOS LZ version = v01

### WIND/WAVES Summary Plot (Page 1) for 06-JUL-1998, DOY = 187

DAILY Tue Sep 16, 2008  
 Re = 65.96 (65.89, 2.20, -2.18 GSE)



```

RAD2
Antenna Ey .....
Mode LIN(1) .....
SUM/SEP SUM .....
Toggle OFF .....
RAD1
Antenna Ex .....
Mode LIS(2,3) .....
SUM/SEP SUM .....
Toggle OFF .....
TNR
Antenna ExEy .....
Mode A-32 .....
Sweep ABCDE .....
  
```