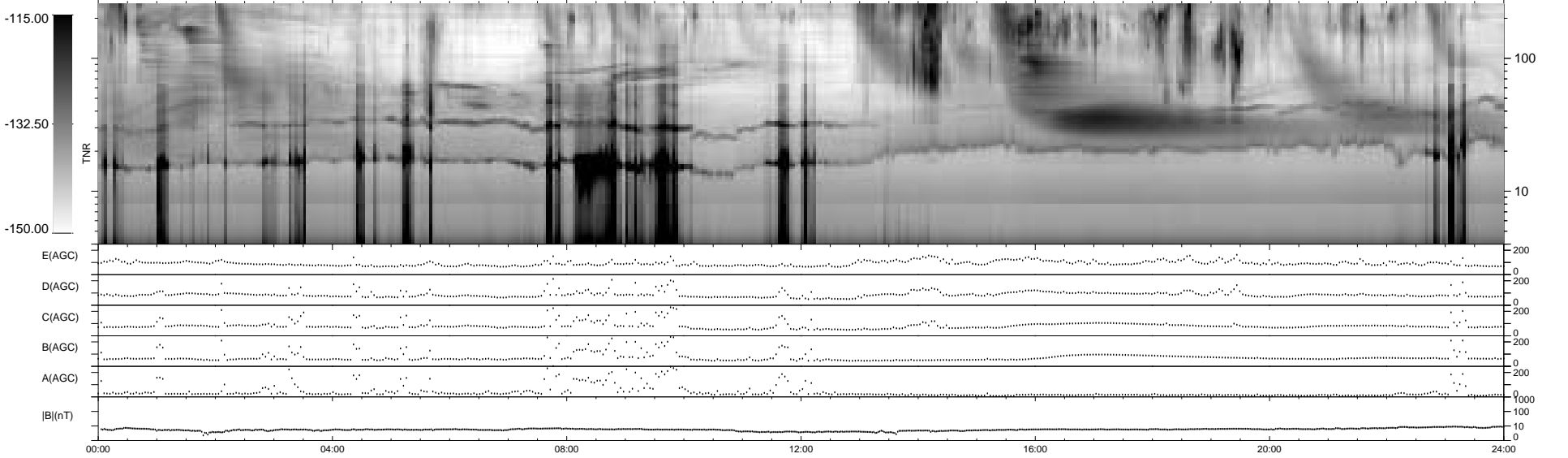
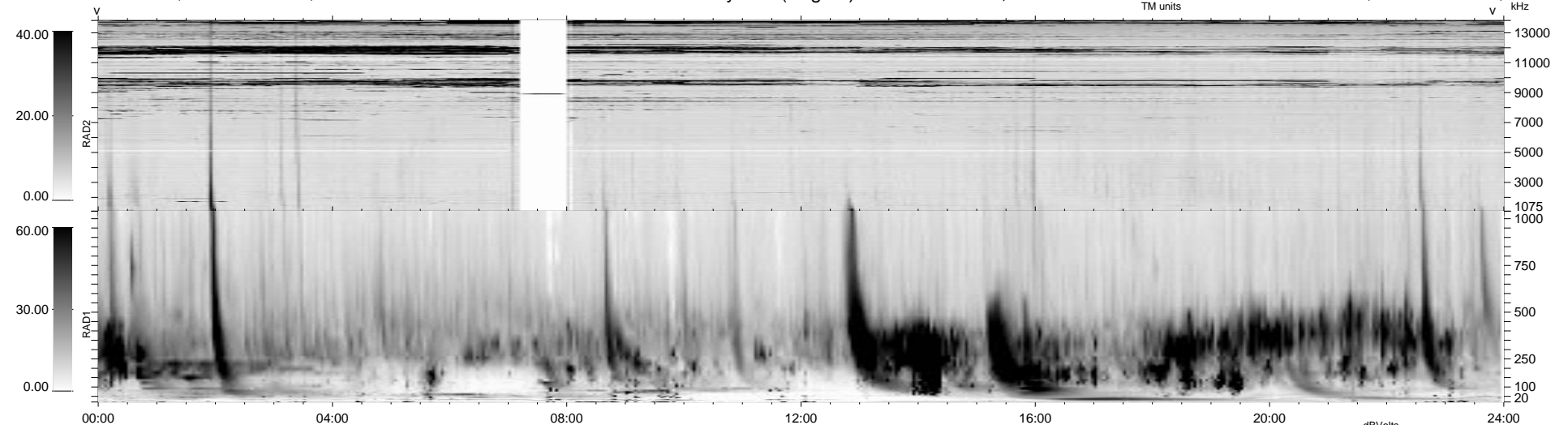


17 bad + 922 good MF/939MF projected (98%) - 0 missing MFs
 Avg interval = 180 secs
 Re = 30.08 (25.31, -16.24, -0.63 GSE)

1.7d VMS-SunOS LZ version = v01
 DAILY Tue Sep 16, 2008
 Re = 44.88 (43.53, -10.85, -1.30 GSE)

WIND/WAVES Summary Plot (Page 1) for 04-JUL-1998, DOY = 185



RAD2
 Antenna Ey
 Mode LIN(1) FIX(157) LIN(1)
 SUM/SEP SUM SEP SUM
 Toggle OFF

RAD1
 Antenna Ex
 Mode LIS(2,3)
 SUM/SEP SUM
 Toggle OFF

TNR
 Antenna ExEy
 Mode A-32
 Sweep ABCDE