

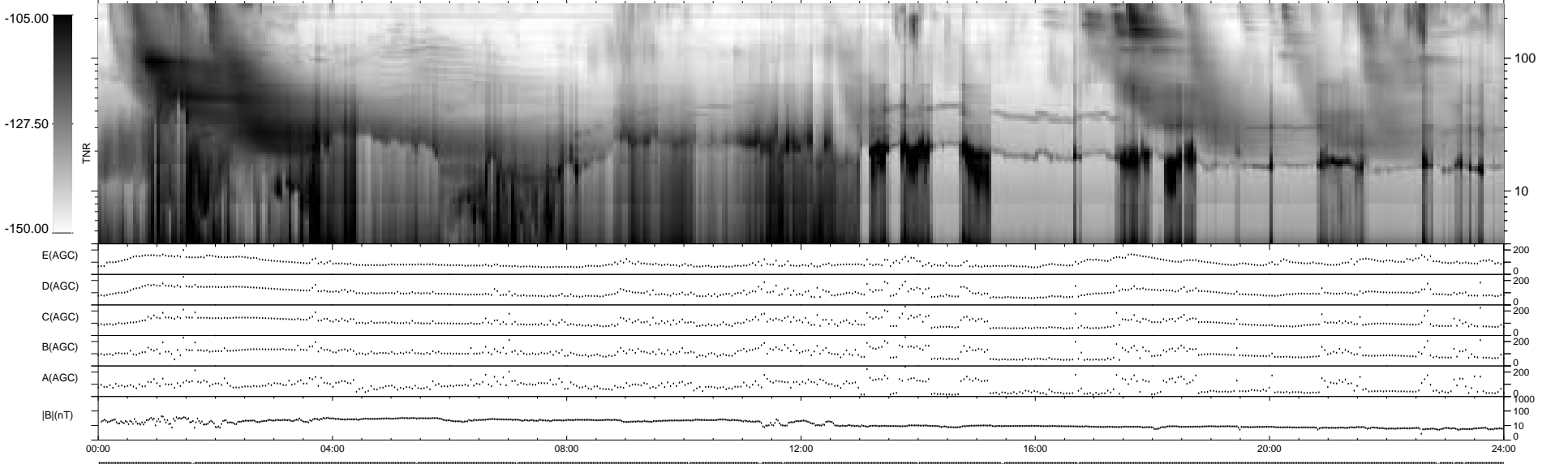
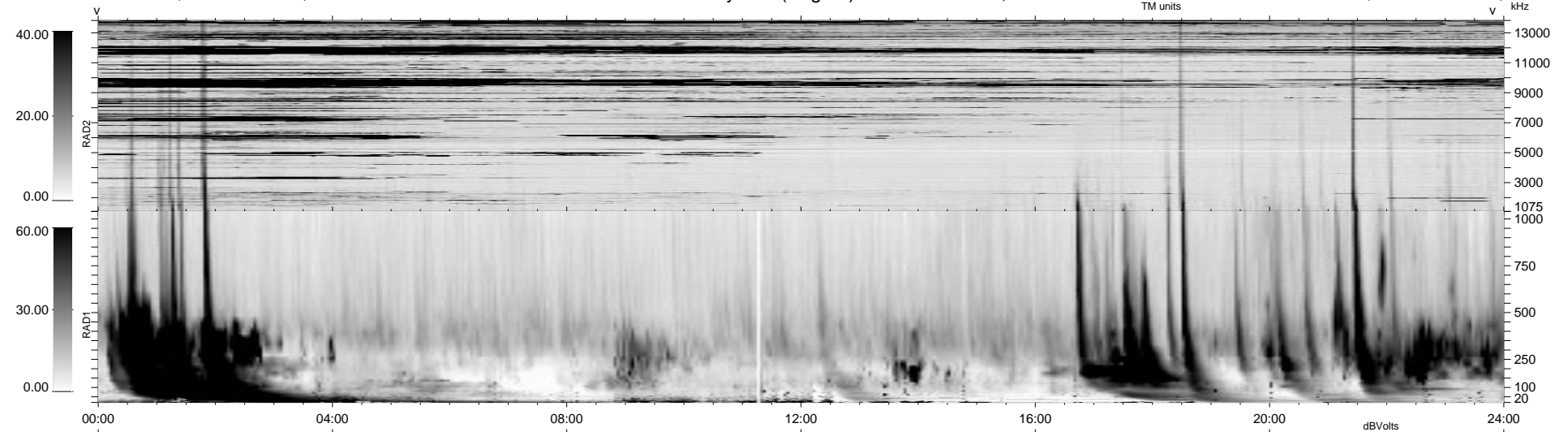
16 bad + 923 good MF/939MF projected (98%) - 0 missing MFs
 Avg interval = 180 secs
 Re = 12.37 (-3.53, -11.86, 0.25 GSE)

1.7d VMS-SunOS

LZ version = v01

WIND/WAVES Summary Plot (Page 1) for 03-JUL-1998, DOY = 184

DAILY Tue Sep 16, 2008
 Re = 29.96 (25.15, -16.27, -0.63 GSE)



RAD2
 Antenna Ey
 Mode LIN(1)
 SUM/SEP SUM
 Toggle OFF

RAD1
 Antenna Ex
 Mode LIS(2,3)
 SUM/SEP SUM
 Toggle OFF

TNR
 Antenna ExEy
 Mode A-32
 Sweep ABCDE