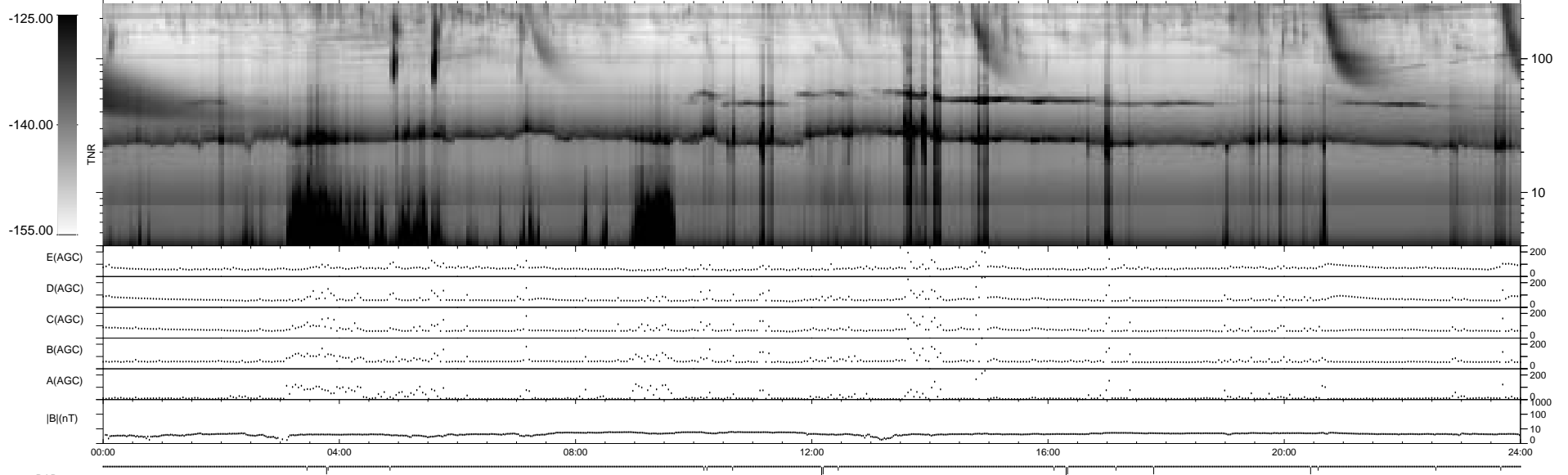
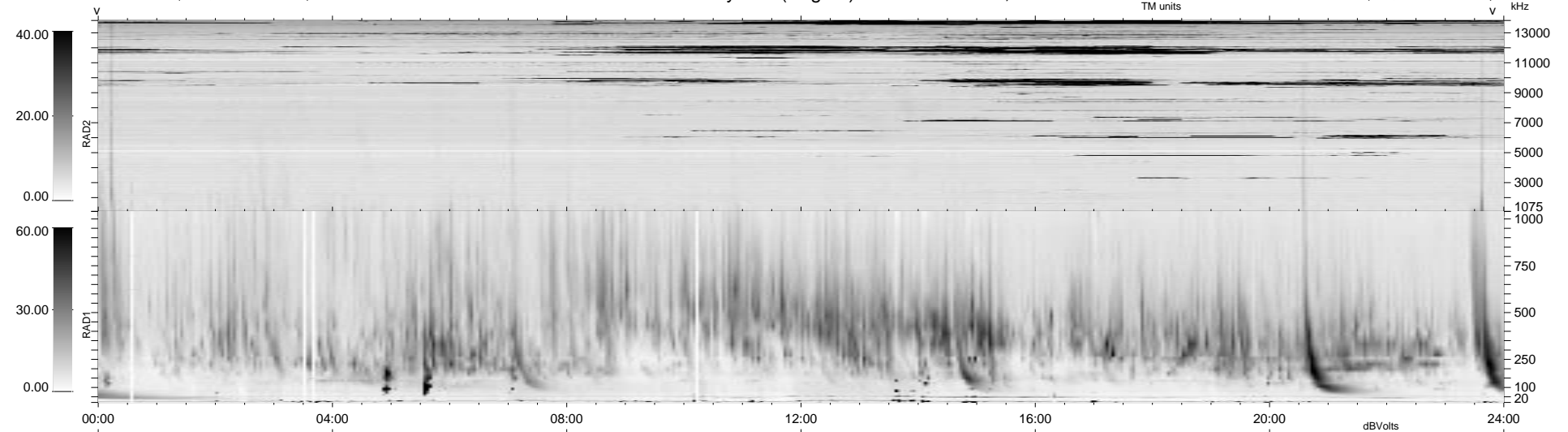


19 bad + 921 good MF/940MF projected (97%) - 0 missing MFs
 Avg interval = 180 secs
 Re = 52.57 (16.69, 49.84, -1.13 GSE)

1.7d VMS-SunOS LZ version = v01
 DAILY Tue Sep 16, 2008
 Re = 39.57 (4.54, 39.30, -0.64 GSE)

WIND/WAVES Summary Plot (Page 1) for 30-JUN-1998, DOY = 181



RAD2
 Antenna Ey
 Mode LIN(1)
 SUM/SEP SUM
 Toggle OFF
 RAD1
 Antenna Ex
 Mode LIS(2,3)
 SUM/SEP SUM
 Toggle OFF
 TNR
 Antenna ExEy
 Mode A-32
 Sweep ABCDE