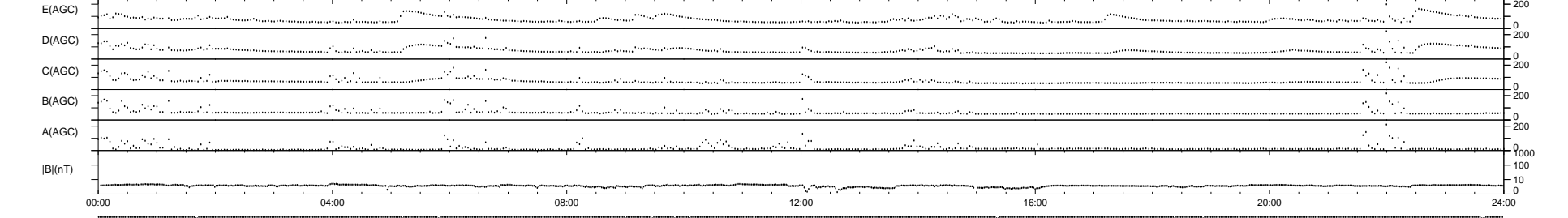
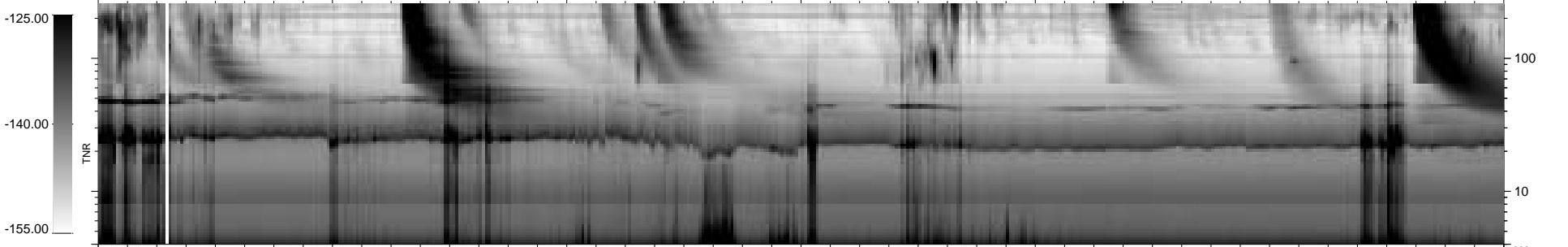
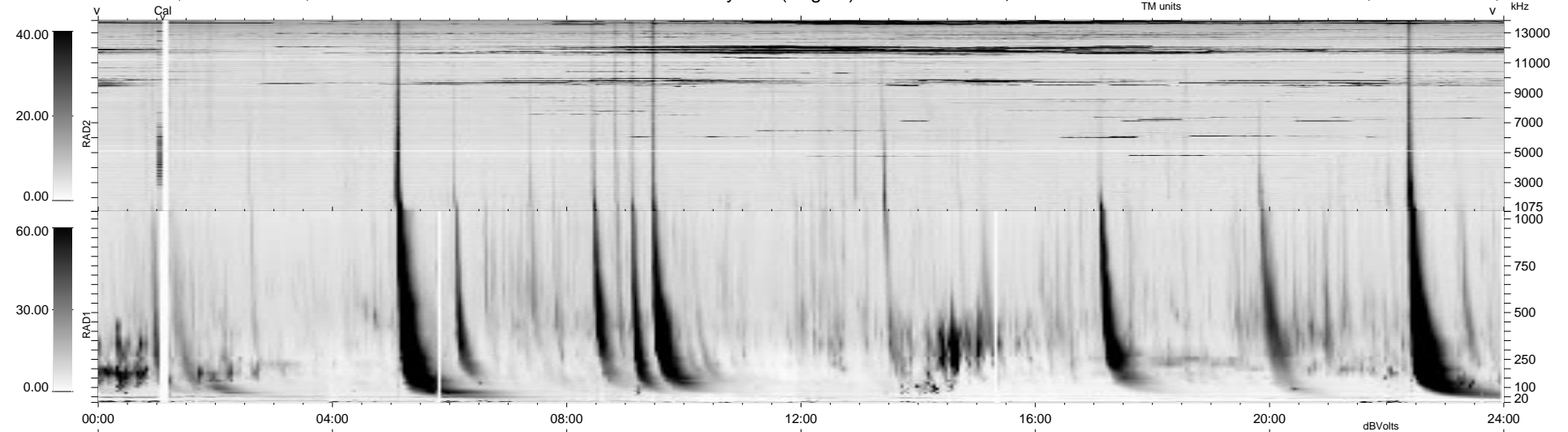


18 bad + 921 good MF/939MF projected (98%) - 0 missing MFs
 Avg interval = 180 secs
 Re = 64.52 (28.76, 57.75, -0.80 GSE)

1.7d VMS-SunOS LZ version = v01
 DAILY Tue Sep 16, 2008
 Re = 52.66 (16.77, 49.90, -1.13 GSE)

WIND/WAVES Summary Plot (Page 1) for 29-JUN-1998, DOY = 180



RAD2
 Antenna Ey
 Mode LIN(1)
 SUM/SEP SUM
 Toggle OFF

RAD1
 Antenna Ex
 Mode LIS(2,3)
 SUM/SEP SUM
 Toggle OFF

TNR
 Antenna ExEy
 Mode A-32
 Sweep ABCDE