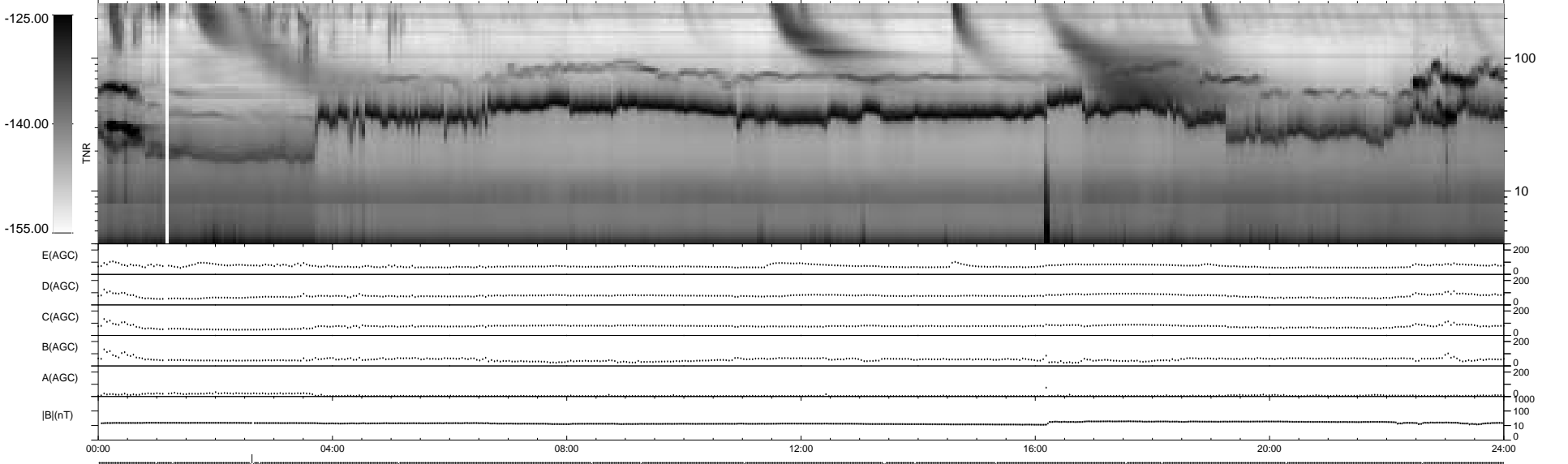
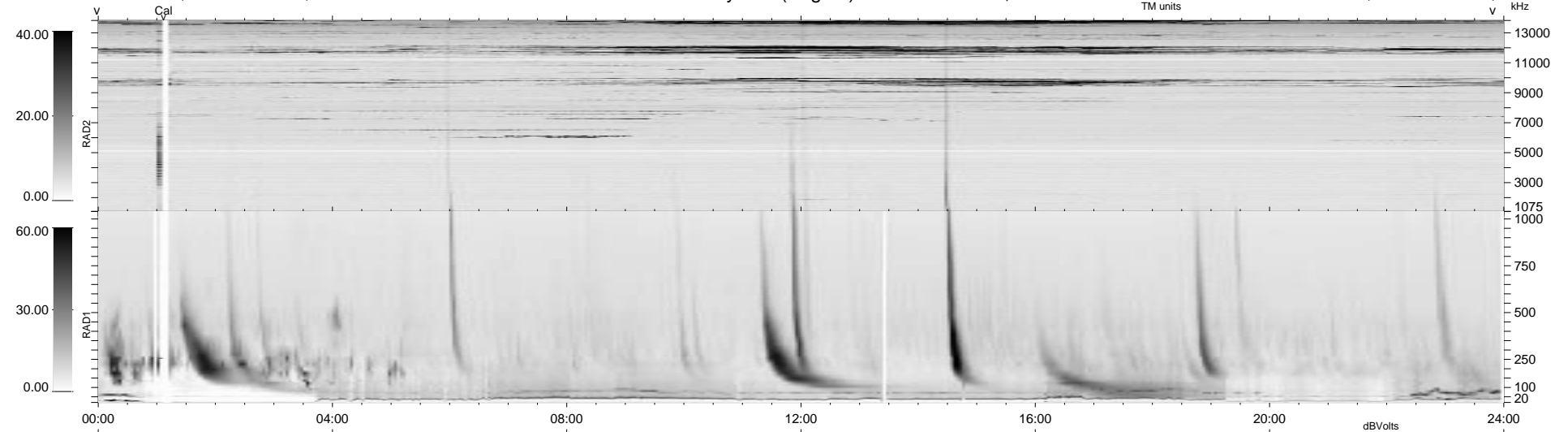


17 bad + 921 good MF/939MF projected (98%) - 1 missing MF
 Avg interval = 180 secs
 Re = 100.24 (74.99, 66.33, 4.92 GSE)

1.7d VMS-SunOS LZ version = v01
 DAILY Tue Sep 16, 2008
 Re = 92.58 (65.08, 65.75, 3.59 GSE)

WIND/WAVES Summary Plot (Page 1) for 25-JUN-1998, DOY = 176



RAD2
 Antenna Ey
 Mode LIN(1)
 SUM/SEP SUM
 Toggle OFF

RAD1
 Antenna Ex
 Mode LIS(2,3)
 SUM/SEP SUM
 Toggle OFF

TNR
 Antenna ExEy
 Mode A-32
 Sweep ABCDE