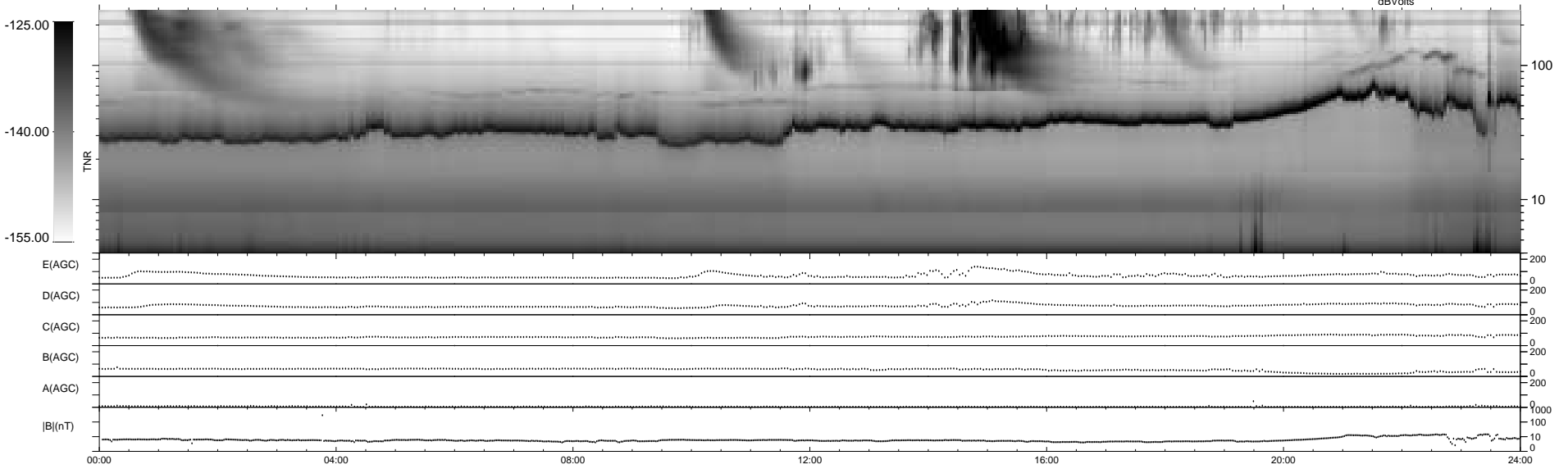
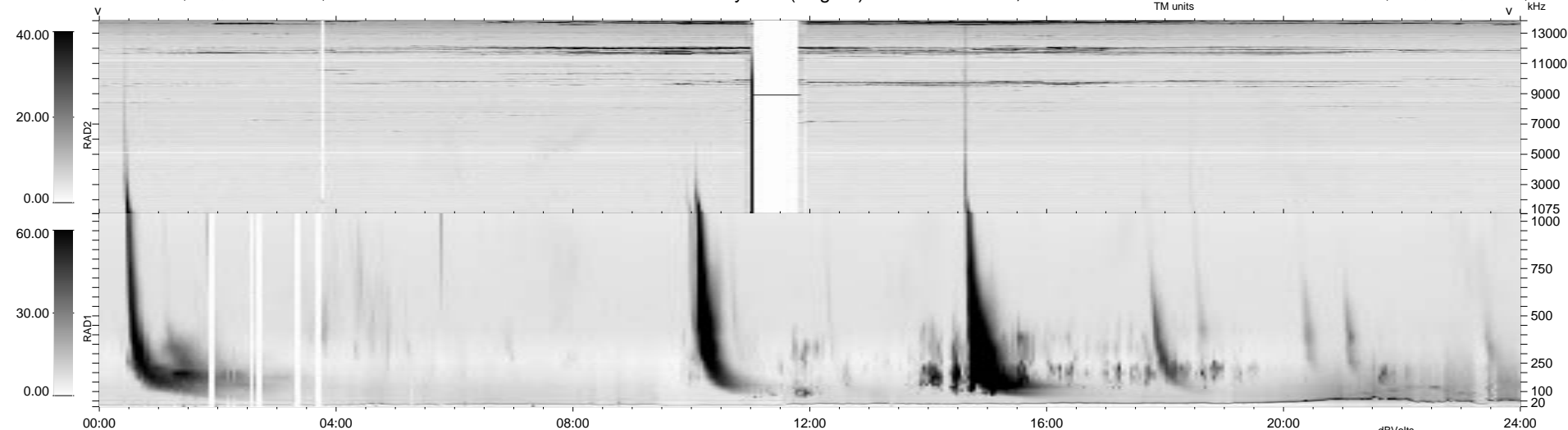


56 bad + 883 good MF/939MF projected (94%) - 0 missing MFs
 Avg interval = 180 secs
 Re = 140.68 (125.49, 62.30, 12.67 GSE)

1.7d VMS-SunOS LZ version = v01
 DAILY Tue Sep 16, 2008
 Re = 136.07 (119.90, 63.26, 11.74 GSE)

WIND/WAVES Summary Plot (Page 1) for 18-JUN-1998, DOY = 169



```

RAD2
Antenna Ey
Mode LIN(1)
SUM/SEP SUM
Toggle OFF
RAD1
Antenna Ex
Mode LIS(2,3)
SUM/SEP SUM
Toggle OFF
TNR
Antenna ExEy
Mode A-32
Sweep ABCDE
  
```