

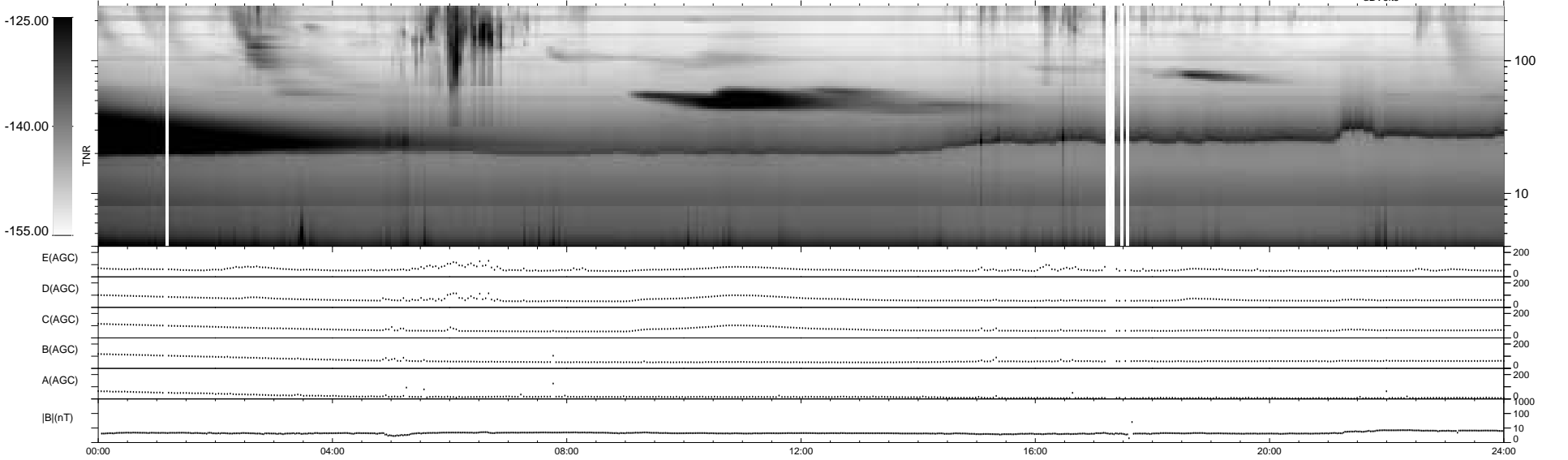
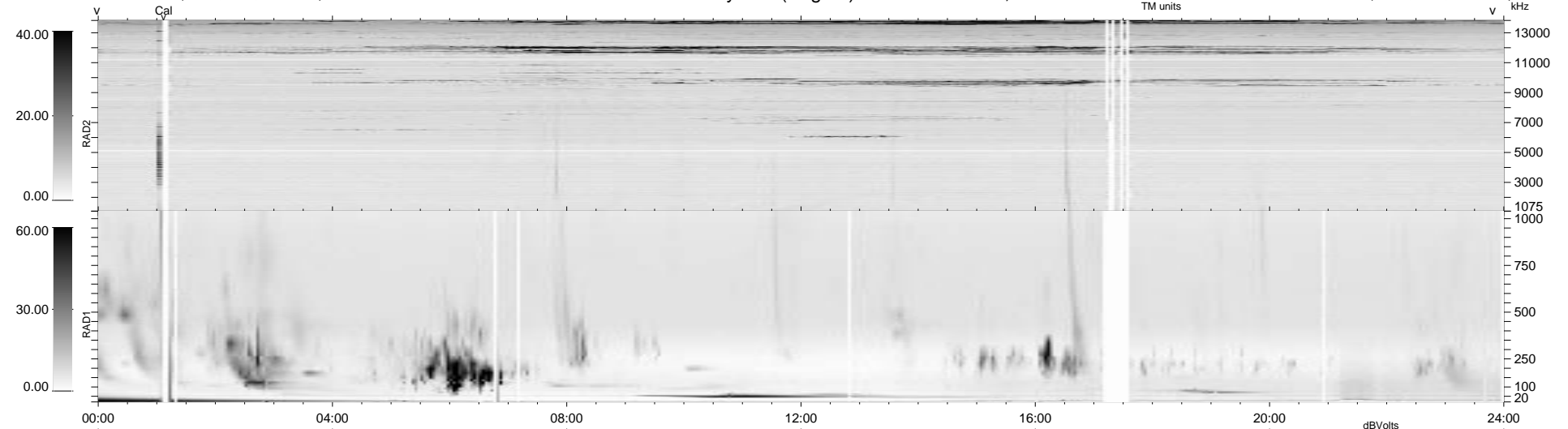
53 bad + 886 good MF/939MF projected (94%) - 0 missing MFs
 Avg interval = 180 secs
 Re = - 145.03 (130.74, 61.30, 13.55 GSE)

1.7d VMS-SunOS

LZ version = v01

WIND/WAVES Summary Plot (Page 1) for 17-JUN-1998, DOY = 168

DAILY Tue Sep 16, 2008
 Re = 140.71 (125.53, 62.29, 12.67 GSE)



```

RAD2
Antenna Ey .....
Mode LIN(1) .....
SUM/SEP SUM .....
Toggle OFF .....

RAD1
Antenna Ex .....
Mode LIS(2,3) .....
SUM/SEP SUM .....
Toggle OFF .....

TNR
Antenna ExEy .....
Mode A-32 .....
Sweep ABCDE .....
  
```