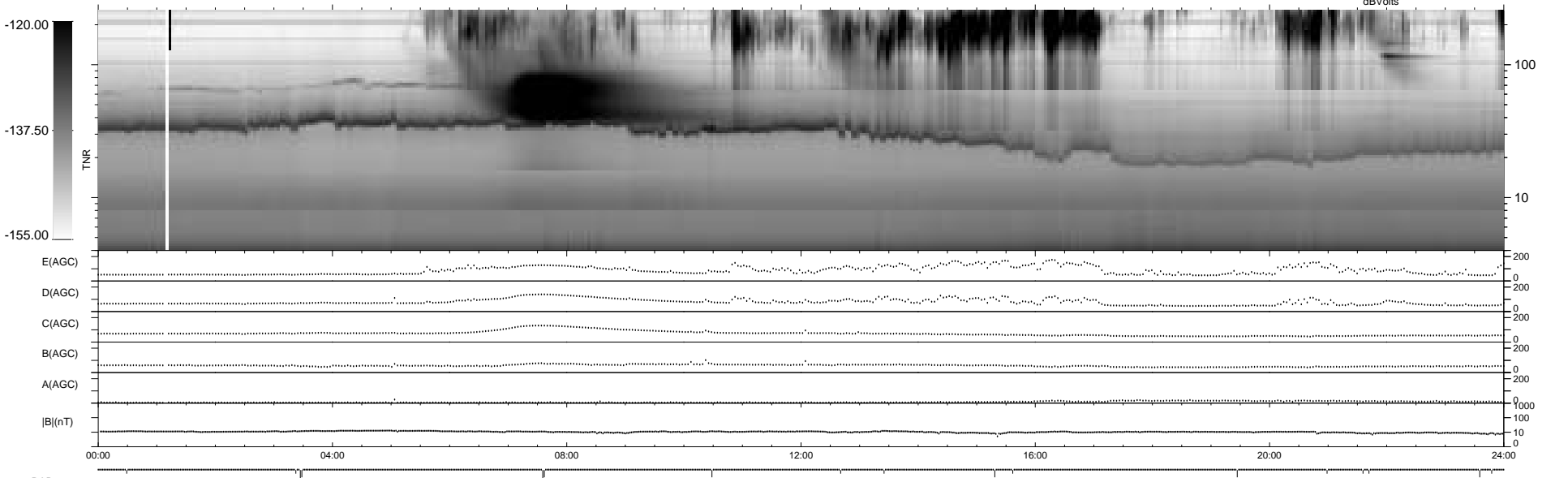
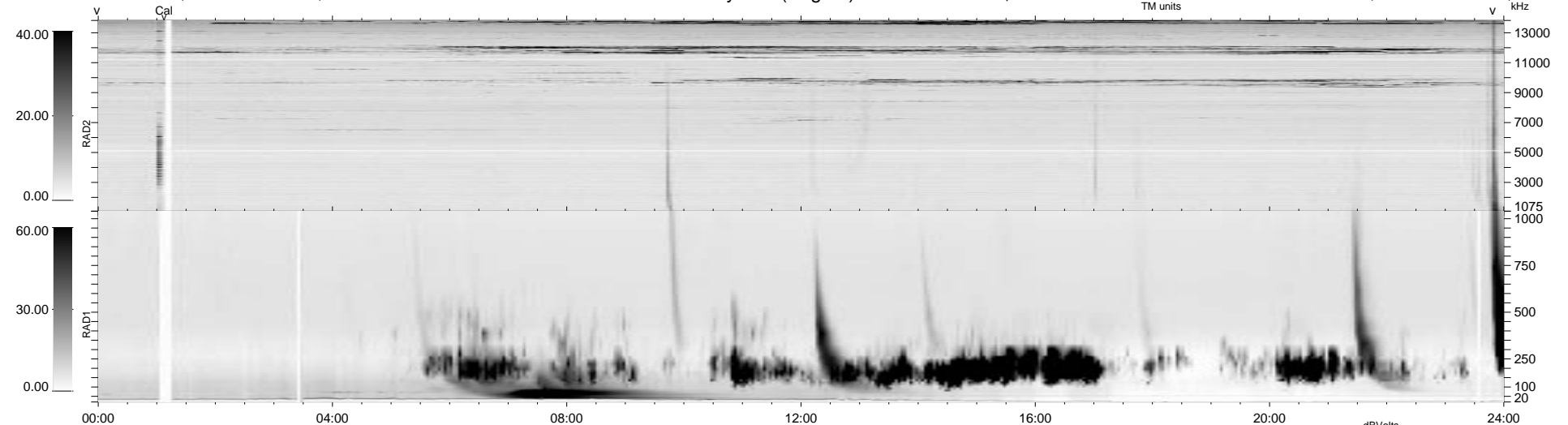


17 bad + 923 good MF/940MF projected (98%) - 0 missing MFs
 Avg interval = 180 secs
 Re = - 152.98 (140.23, 59.23, 15.15 GSE)

1.7d VMS-SunOS LZ version = v01
 DAILY Tue Sep 16, 2008
 Re = 149.15 (135.67, 60.27, 14.39 GSE)

WIND/WAVES Summary Plot (Page 1) for 15-JUN-1998, DOY = 166



E(AGC) 0 200
 D(AGC) 0 200
 C(AGC) 0 200
 B(AGC) 0 200
 A(AGC) 0 200
 |B|(nT) 0 1000
 0 10
 0 0

RAD2
 Antenna Ey
 Mode LIN(1)
 SUM/SEP SUM
 Toggle OFF

RAD1
 Antenna Ex
 Mode LIS(2,3)
 SUM/SEP SUM
 Toggle OFF

TNR
 Antenna ExEy
 Mode A-32
 Sweep ABCDE