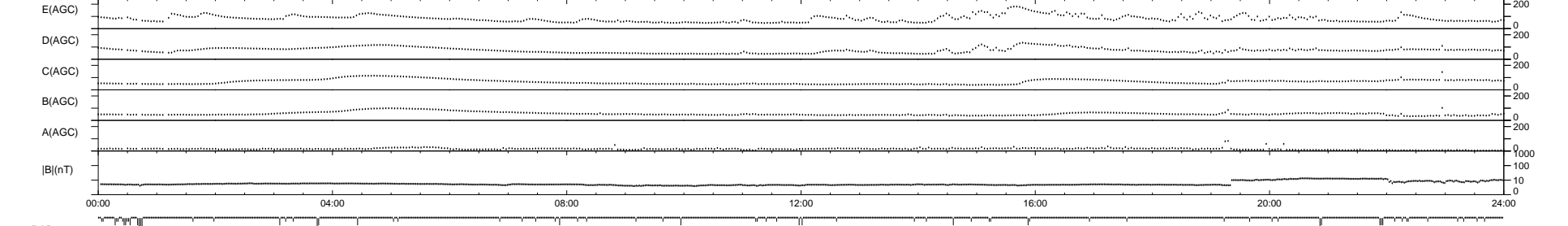
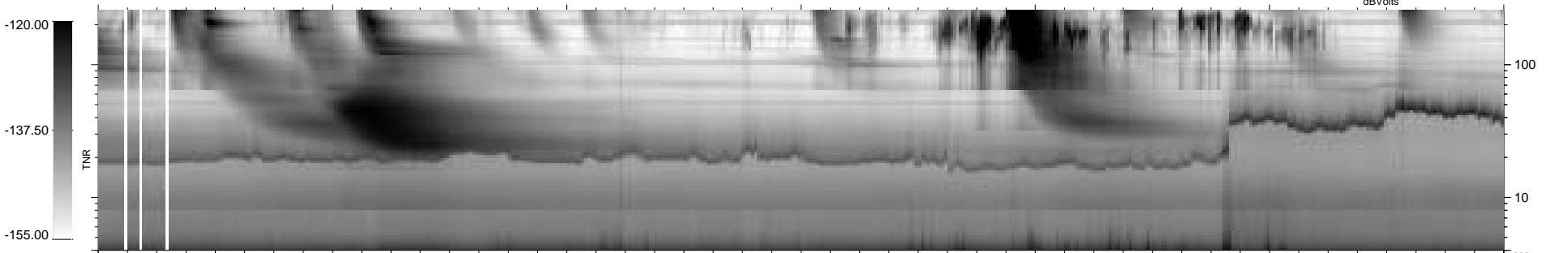
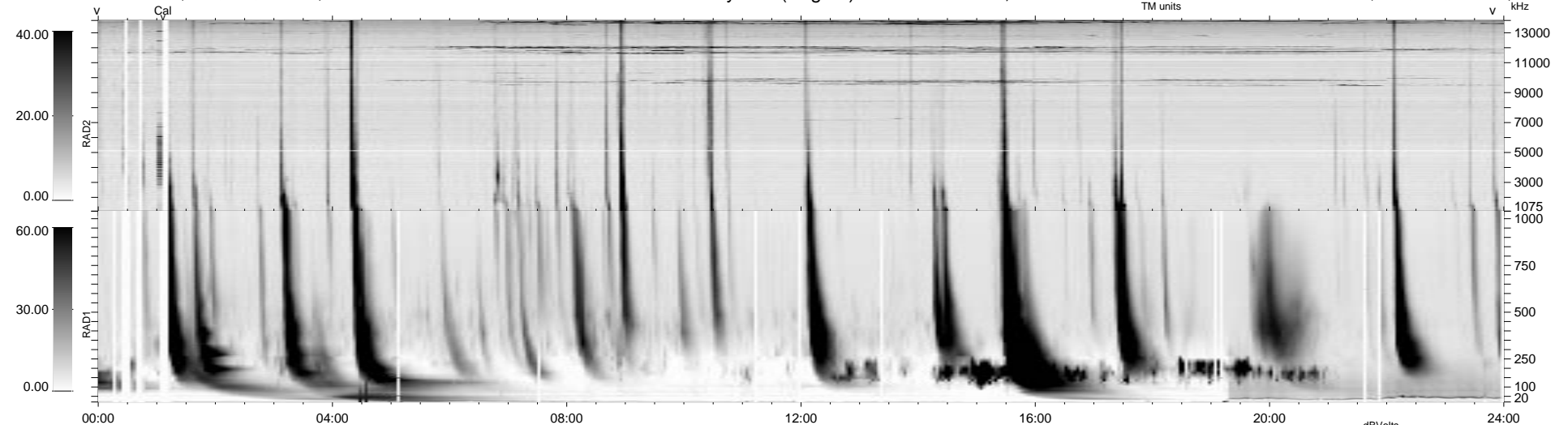


70 bad + 869 good MF/939MF projected (92%) - 0 missing MFs
 Avg interval = 180 secs
 Re = 160.06 (148.60, 57.12, 16.54 GSE)

1.7d VMS-SunOS LZ version = v01
 DAILY Tue Sep 16, 2008
 Re = 156.64 (144.57, 58.17, 15.88 GSE)

WIND/WAVES Summary Plot (Page 1) for 13-JUN-1998, DOY = 164



RAD2
 Antenna Ey
 Mode LIN(1)
 SUM/SEP SUM
 Toggle OFF

RAD1
 Antenna Ex
 Mode LIS(2,3)
 SUM/SEP SUM
 Toggle OFF

TNR
 Antenna ExEy
 Mode A-32
 Sweep ABCDE