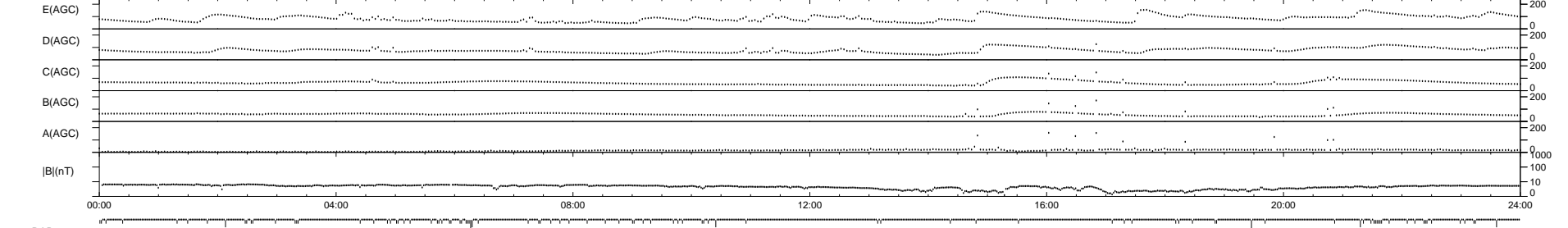
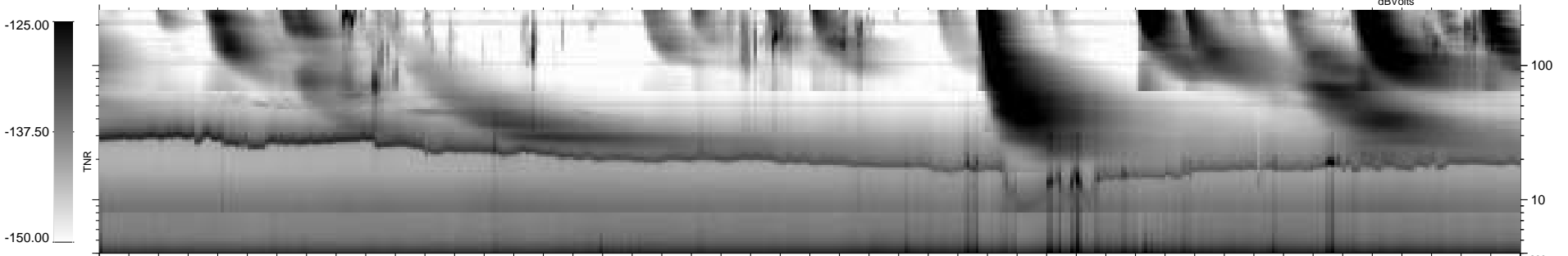
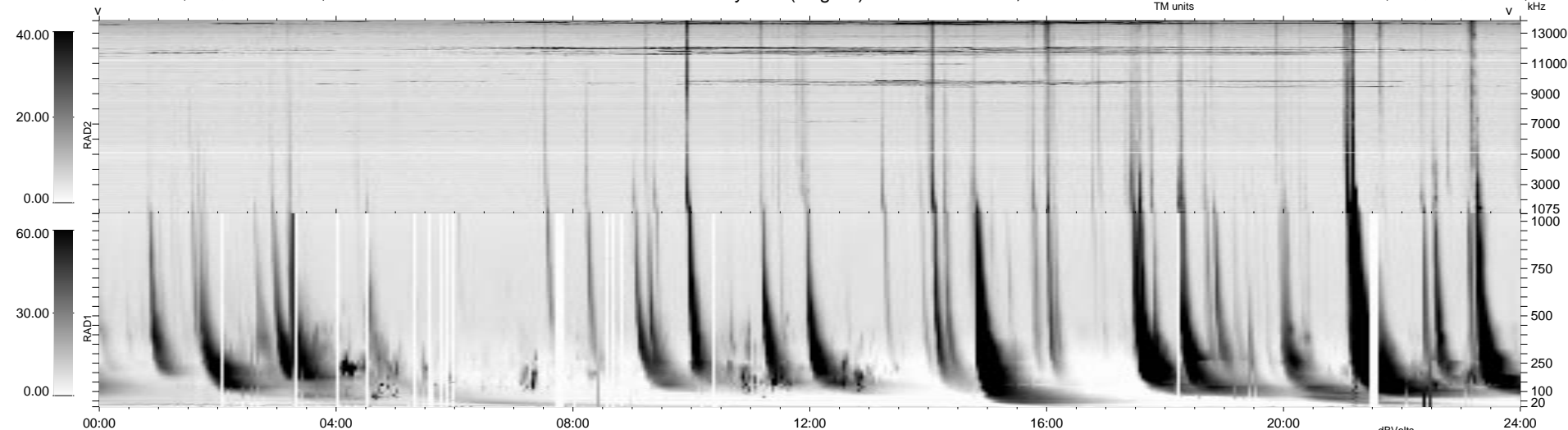


96 bad + 843 good MF/939MF projected (89%) - 0 missing MFs  
 Avg interval = 180 secs  
 Re = 163.32 (152.44, 56.05, 17.16 GSE)

1.7d VMS-SunOS LZ version = v01  
 DAILY Tue Sep 16, 2008  
 Re = 160.08 (148.63, 57.11, 16.55 GSE)

WIND/WAVES Summary Plot (Page 1) for 12-JUN-1998, DOY = 163



RAD2  
 Antenna Ey  
 Mode LIN(1)  
 SUM/SEP SUM  
 Toggle OFF

RAD1  
 Antenna Ex  
 Mode LIS(2,3)  
 SUM/SEP SUM  
 Toggle OFF

TNR  
 Antenna ExEy  
 Mode A-32  
 Sweep ABCDE