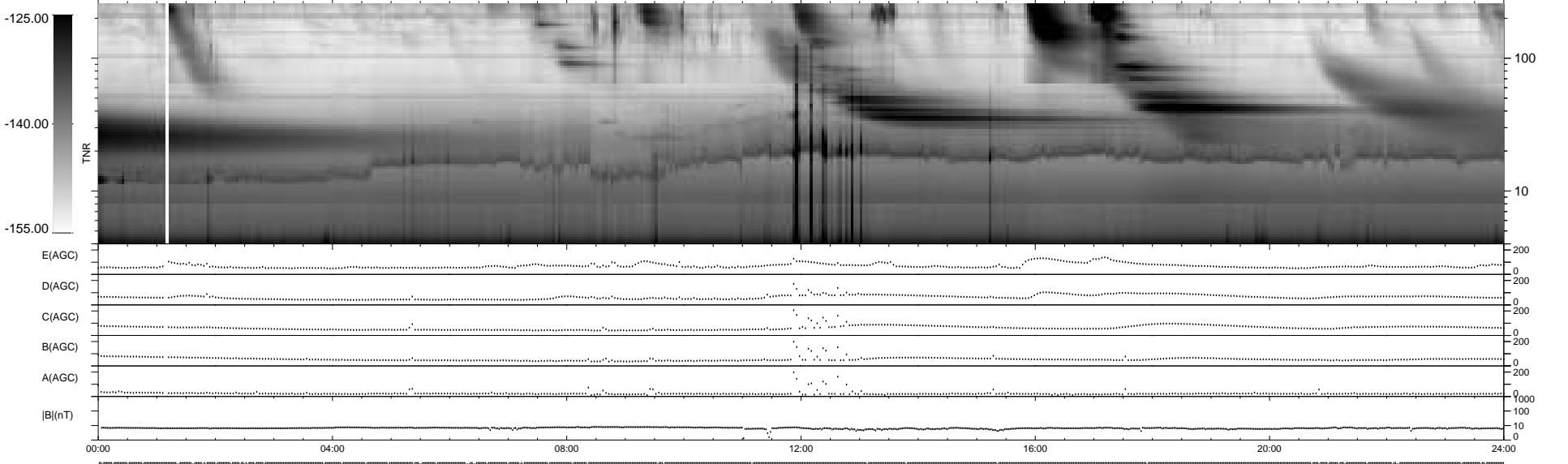
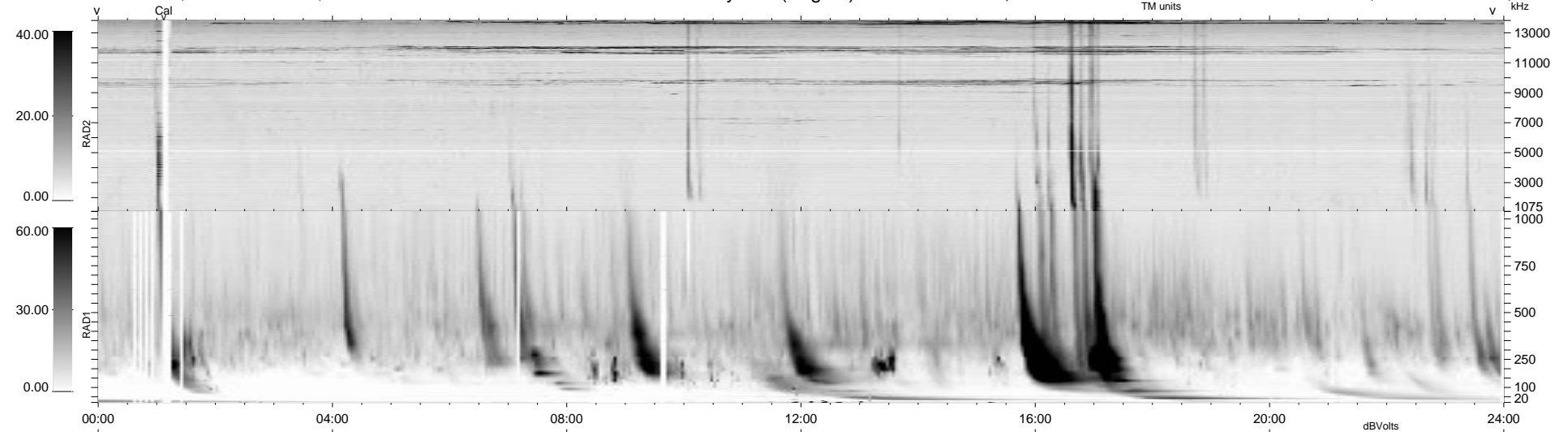


56 bad + 883 good MF/939MF projected (94%) - 0 missing MFs
 Avg interval = 180 secs
 Re = - 172.15 (162.79, 52.78, 18.69 GSE)

1.7d VMS-SunOS LZ version = v01
 DAILY Tue Sep 16, 2008
 Re = 169.38 (159.54, 53.88, 18.23 GSE)

WIND/WAVES Summary Plot (Page 1) for 09-JUN-1998, DOY = 160



RAD2
 Antenna Ey
 Mode LIN(1)
 SUM/SEP SUM
 Toggle OFF

RAD1
 Antenna Ex
 Mode LIS(2,3)
 SUM/SEP SUM
 Toggle OFF

TNR
 Antenna ExEy
 Mode A-32
 Sweep ABCDE