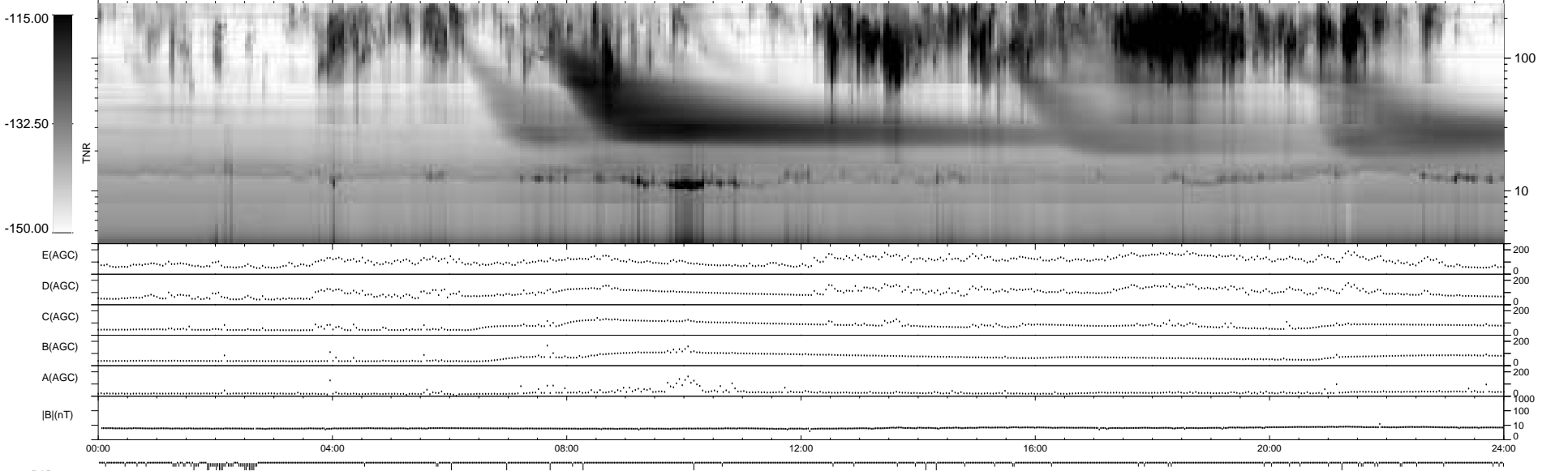
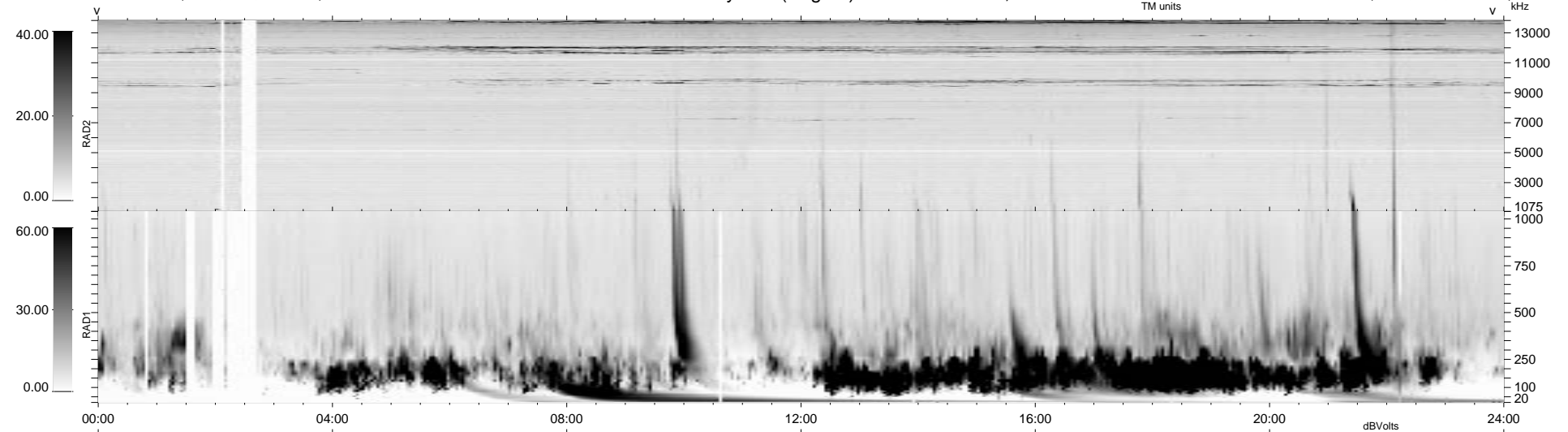


88 bad + 851 good MF/939MF projected (90%) - 0 missing MFs
 Avg interval = 180 secs
 Re = 174.81 (165.91, 51.65, 19.10 GSE)

1.7d VMS-SunOS LZ version = v01
 DAILY Tue Sep 16, 2008
 Re = 172.17 (162.82, 52.77, 18.69 GSE)

WIND/WAVES Summary Plot (Page 1) for 08-JUN-1998, DOY = 159



```

RAD2
Antenna Ey .....
Mode LIN(1) .....
SUM/SEP SUM .....
Toggle OFF .....

RAD1
Antenna Ex .....
Mode LIS(2,3) .....
SUM/SEP SUM .....
Toggle OFF .....

TNR
Antenna ExEy .....
Mode A-32 .....
Sweep ABCDE .....
  
```