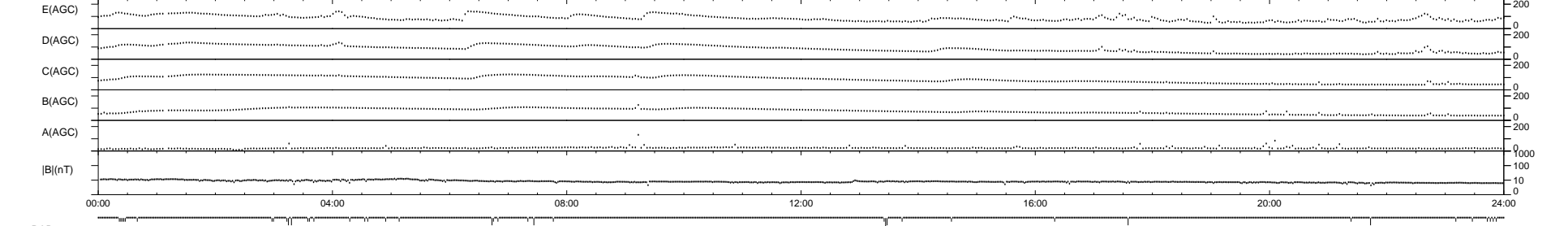
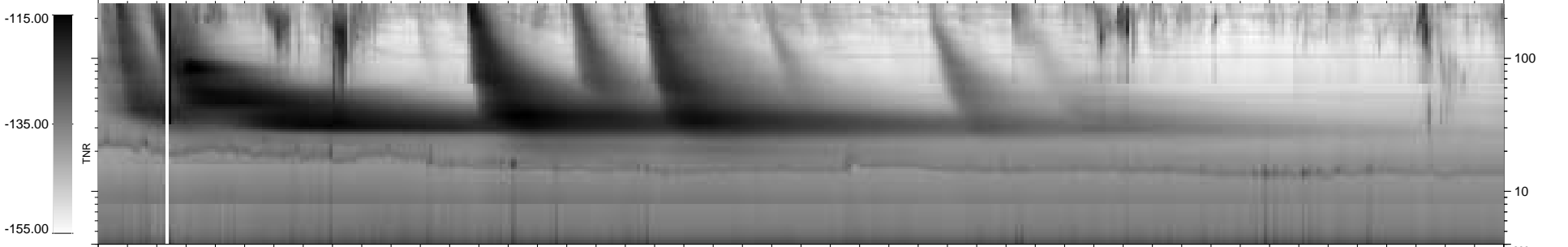
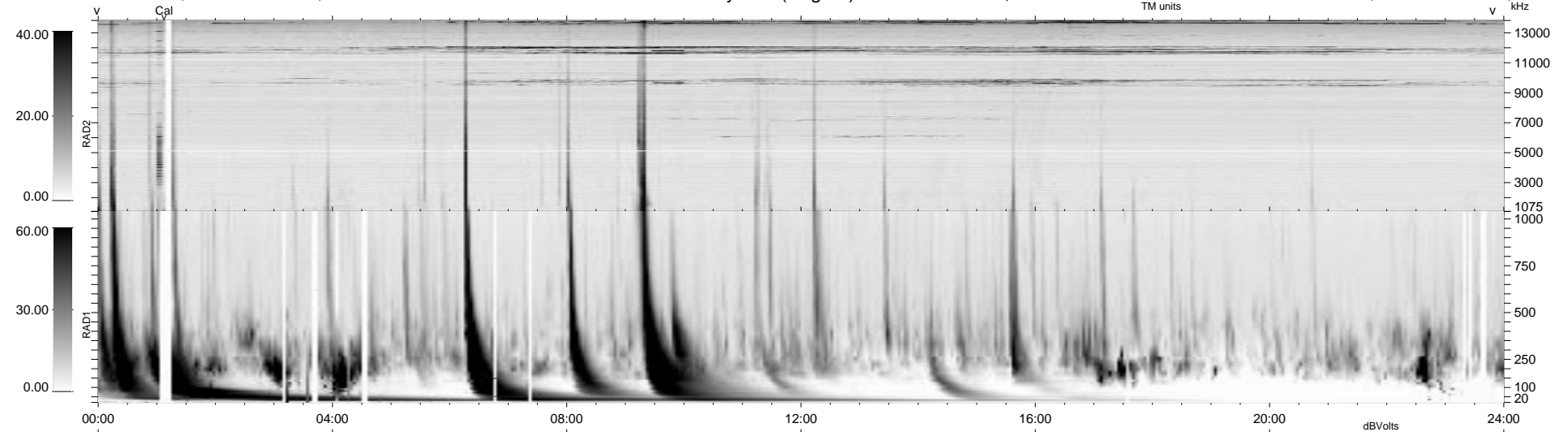


40 bad + 900 good MF/940MF projected (95%) - 0 missing MFs
 Avg interval = 180 secs
 Re = - 177.34 (168.88, 50.50, 19.45 GSE)

1.7d VMS-SunOS LZ version = v01
 DAILY Tue Sep 16, 2008
 Re = 174.83 (165.93, 51.64, 19.10 GSE)

WIND/WAVES Summary Plot (Page 1) for 07-JUN-1998, DOY = 158



RAD2
 Antenna Ey
 Mode LIN(1)
 SUM/SEP SUM
 Toggle OFF
 RAD1
 Antenna Ex
 Mode LIS(2,3)
 SUM/SEP SUM
 Toggle OFF
 TNR
 Antenna ExEy
 Mode A-32
 Sweep ABCDE