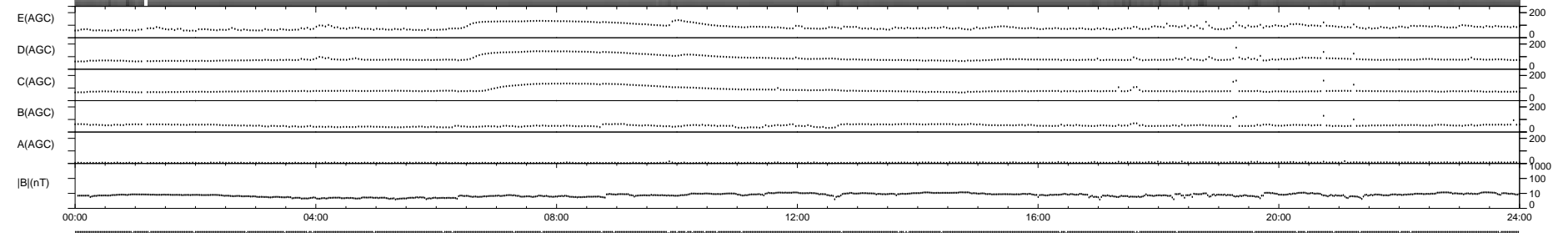
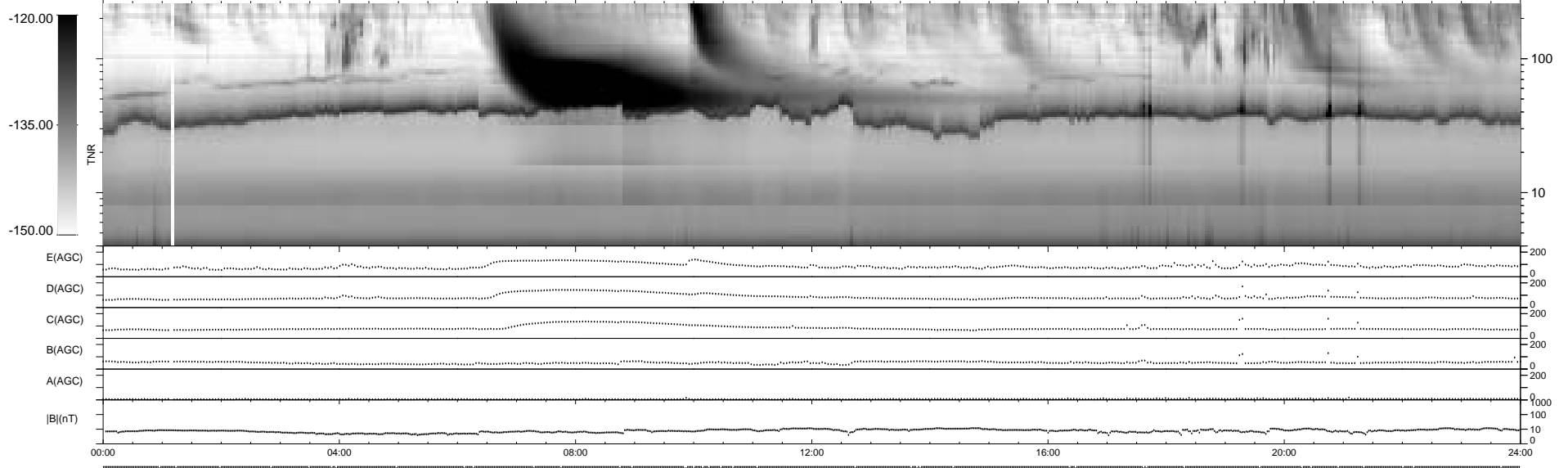
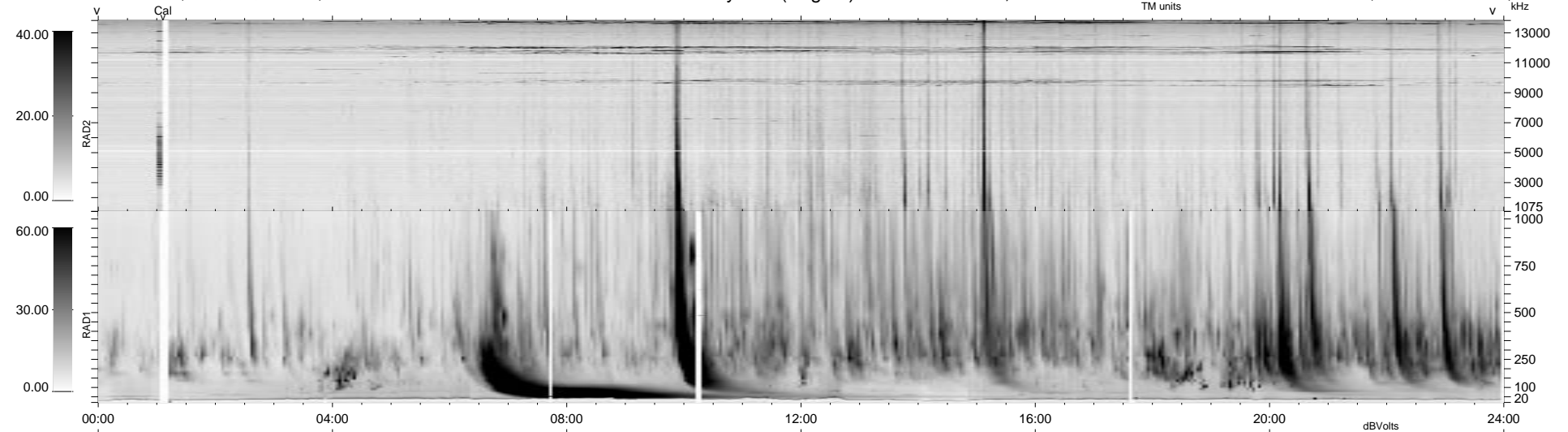


40 bad + 899 good MF/939MF projected (95%) - 0 missing MFs
 Avg interval = 180 secs
 Re = 182.03 (174.41, 48.11, 20.02 GSE)

1.7d VMS-SunOS LZ version = v01
 DAILY Tue Sep 16, 2008
 Re = 179.76 (171.73, 49.31, 19.76 GSE)

WIND/WAVES Summary Plot (Page 1) for 05-JUN-1998, DOY = 156



RAD2
 Antenna Ey
 Mode LIN(1)
 SUM/SEP SUM
 Toggle OFF

RAD1
 Antenna Ex
 Mode LIS(2,3)
 SUM/SEP SUM
 Toggle OFF

TNR
 Antenna ExEy
 Mode A-32
 Sweep ABCDE