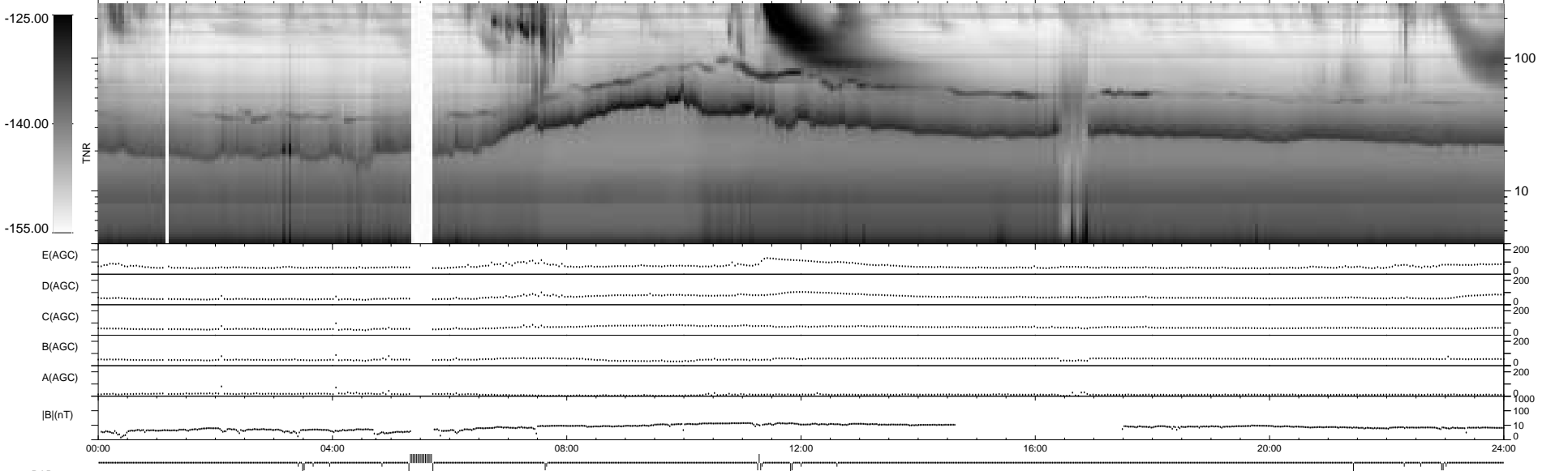
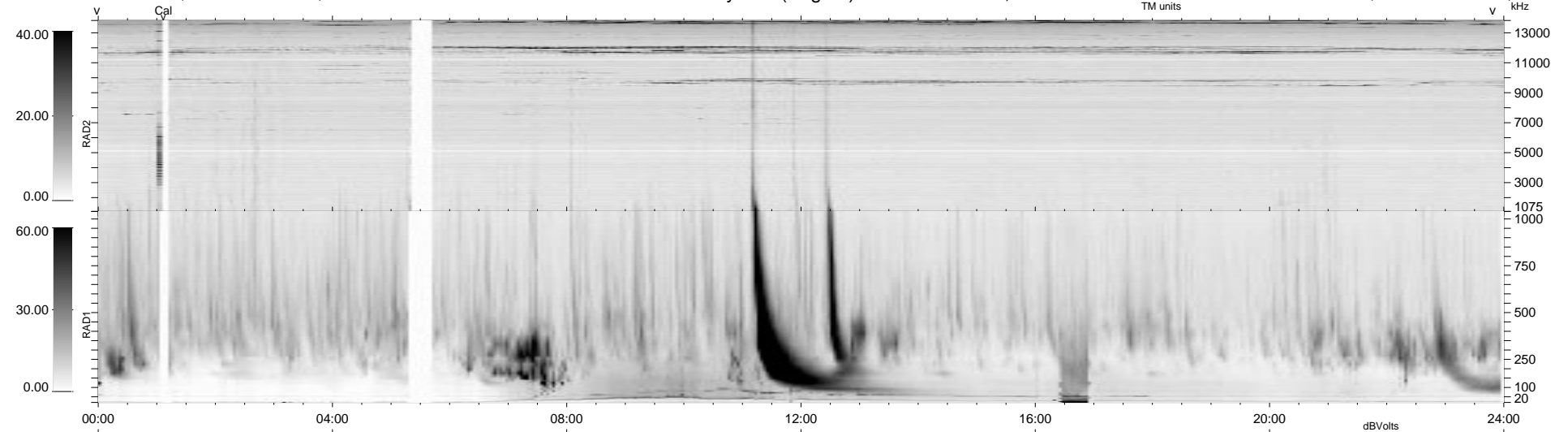


23 bad + 900 good MF/939MF projected (95%) - 16 missing MFs
 Avg interval = 180 secs
 Re = 186.31 (179.44, 45.59, 20.92 GSE)

1.7d VMS-SunOS LZ version = v01
 DAILY Tue Sep 16, 2008
 Re = 184.21 (177.00, 46.86, 20.25 GSE)

WIND/WAVES Summary Plot (Page 1) for 03-JUN-1998, DOY = 154



RAD2
 Antenna Ey
 Mode LIN(1)
 SUM/SEP SUM
 Toggle OFF
 RAD1
 Antenna Ex
 Mode LIS(2,3)
 SUM/SEP SUM
 Toggle OFF
 TNR
 Antenna ExEy
 Mode A-32
 Sweep ABCDE