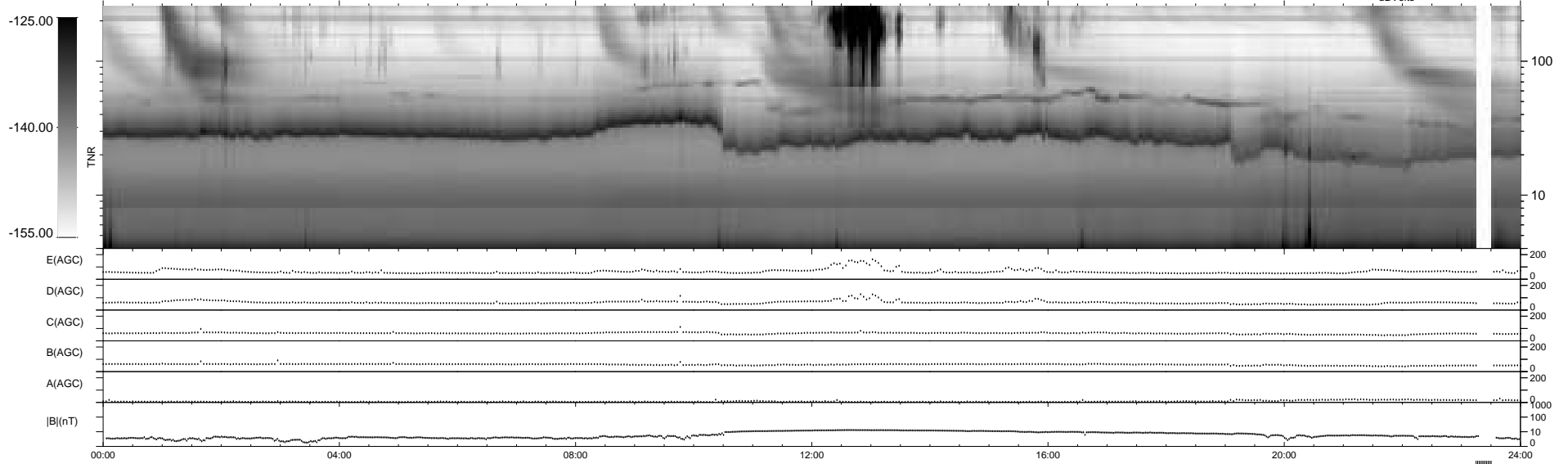
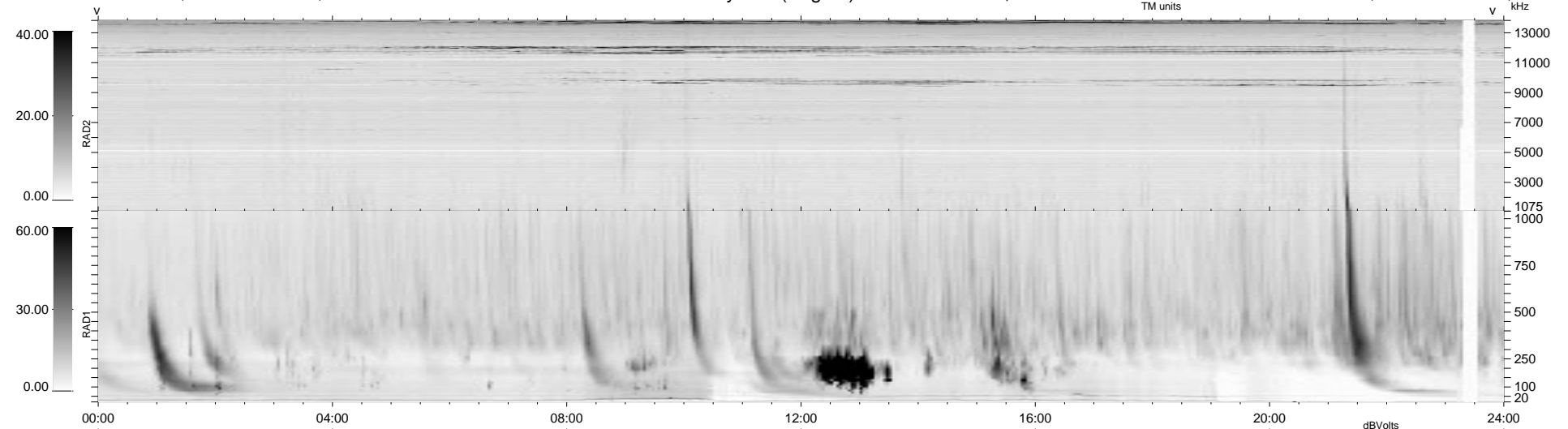


12 bad + 916 good MF/939MF projected (97%) - 11 missing MFs
 Avg interval = 180 secs
 Re = - 188.36 (181.78, 44.27, 21.78 GSE)

1.7d VMS-SunOS LZ version = v01
 DAILY Tue Sep 16, 2008
 Re = 186.33 (179.45, 45.58, 20.92 GSE)

WIND/WAVES Summary Plot (Page 1) for 02-JUN-1998, DOY = 153



RAD2
 Antenna Ey
 Mode LIN(1)
 SUM/SEP SUM
 Toggle OFF

RAD1
 Antenna Ex
 Mode LIS(2,3)
 SUM/SEP SUM
 Toggle OFF

TNR
 Antenna ExEy
 Mode A-32
 Sweep ABCDE