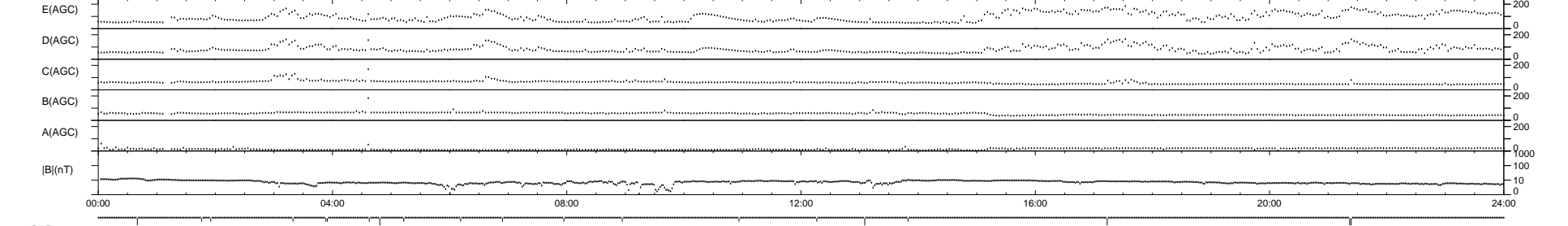
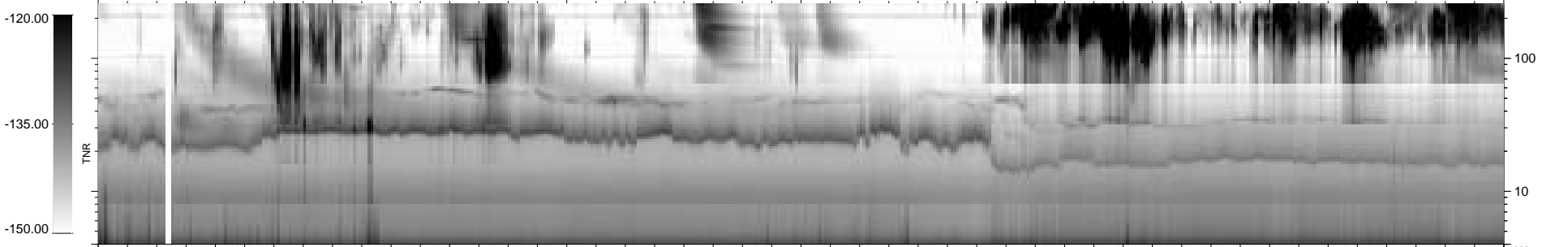
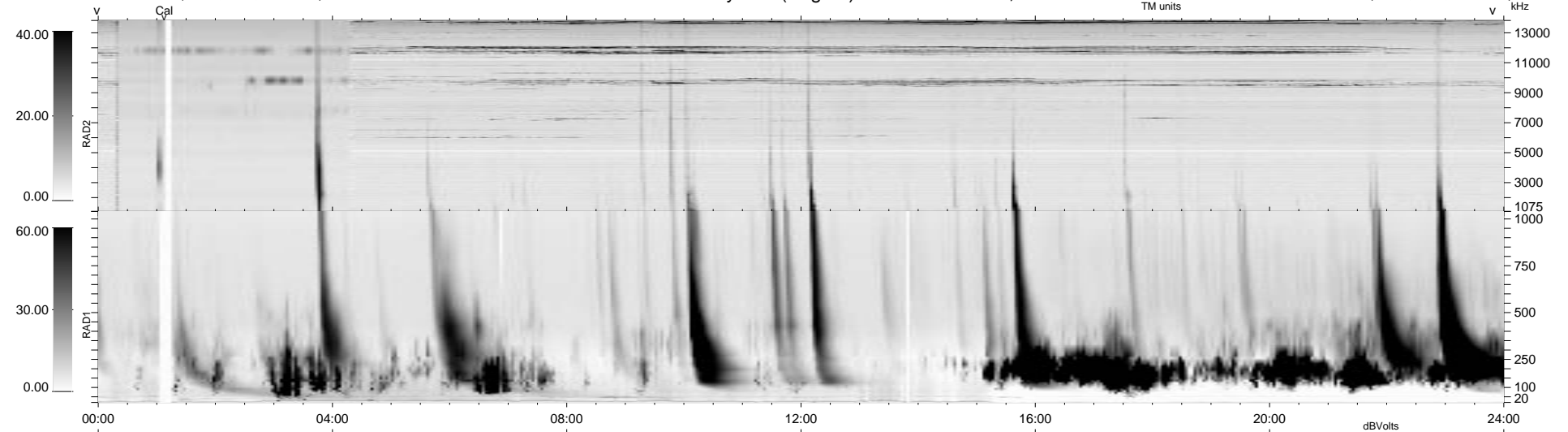


20 bad + 920 good MF/940MF projected (97%) - 0 missing MFs  
 Avg interval = 180 secs  
 Re = 193.84 (188.11, 40.13, 24.09 GSE)

1.7d VMS-SunOS LZ version = v01  
 DAILY Tue Sep 16, 2008  
 Re = 192.13 (186.13, 41.54, 23.37 GSE)

### WIND/WAVES Summary Plot (Page 1) for 30-MAY-1998, DOY = 150



```

RAD2
Antenna Ey .....
Mode LIN(1) LIN(8) LIN(1) .....
SUM/SEP SUM SEP SUM .....
Toggle OFF .....

RAD1
Antenna Ex .....
Mode LIS(2,3) .....
SUM/SEP SUM .....
Toggle OFF .....

TNR
Antenna ExEy .....
Mode A-32 .....
Sweep ABCDE .....
  
```