

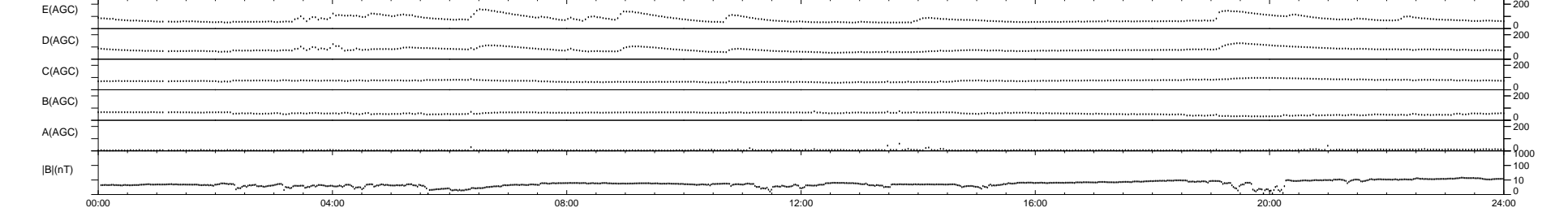
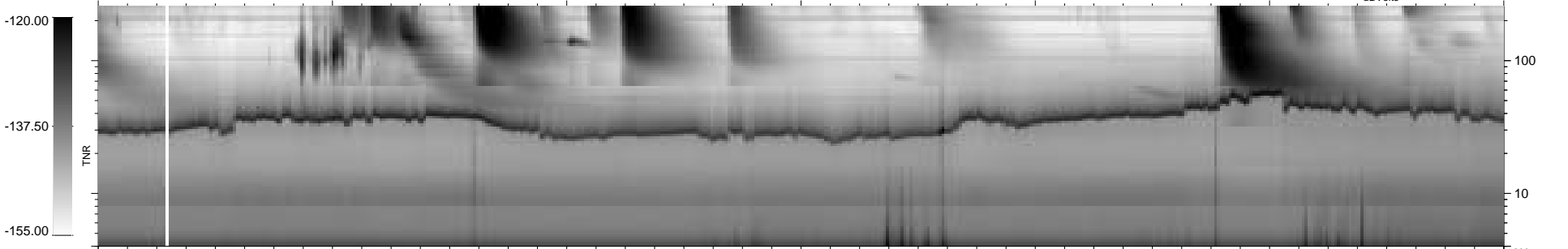
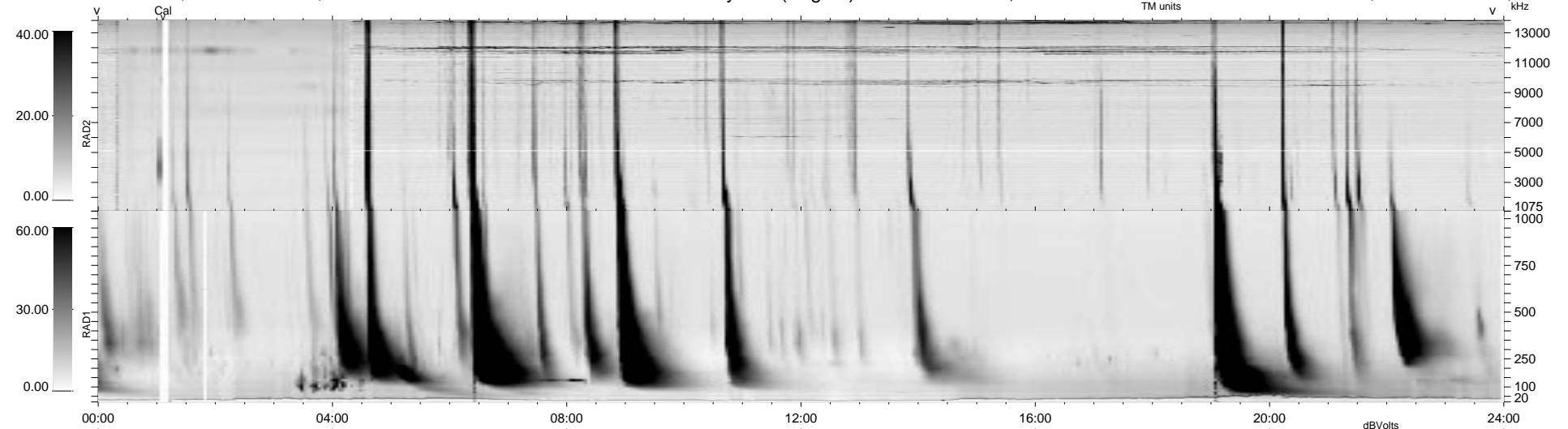
20 bad + 919 good MF/939MF projected (97%) - 0 missing MFs  
 Avg interval = 180 secs  
 Re = 196.97 (191.75, 37.23, 25.41 GSE)

1.7d VMS-SunOS

LZ version = v01

WIND/WAVES Summary Plot (Page 1) for 28-MAY-1998, DOY = 148

DAILY Tue Sep 16, 2008  
 Re = 195.47 (190.00, 38.68, 24.78 GSE)



```

RAD2
Antenna Ey .....
Mode LIN(1) LIN(8) LIN(1)
SUM/SEP SUM SEP SUM
Toggle OFF .....

RAD1
Antenna Ex .....
Mode LIS(2,3)
SUM/SEP SUM
Toggle OFF .....

TNR
Antenna ExEy .....
Mode A-32 .....
Sweep ABCDE .....
  
```