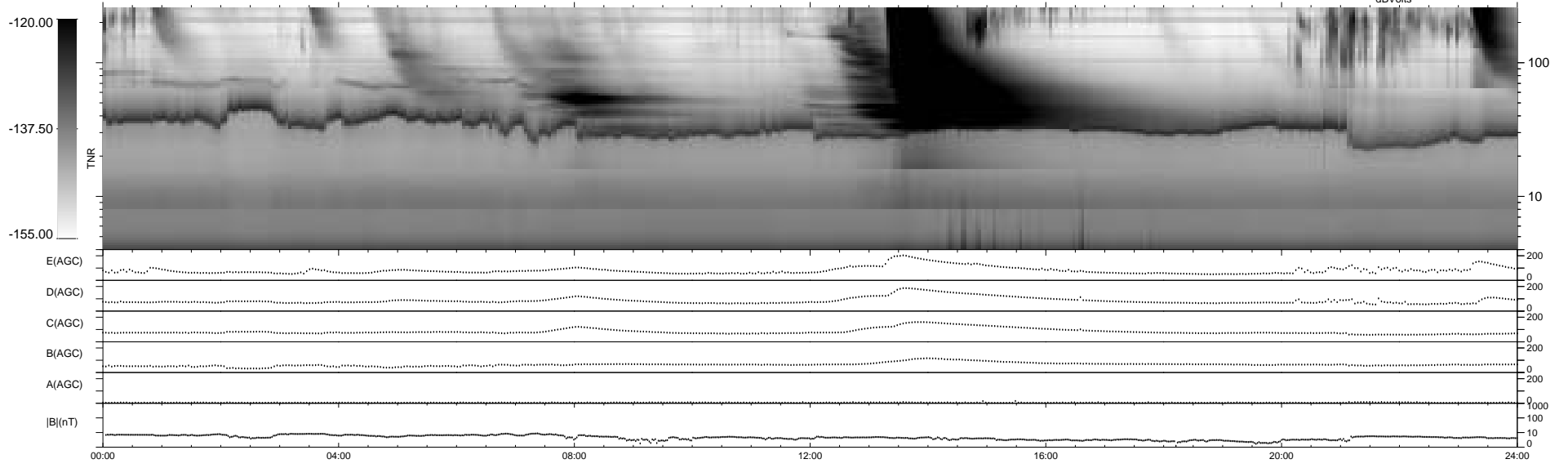
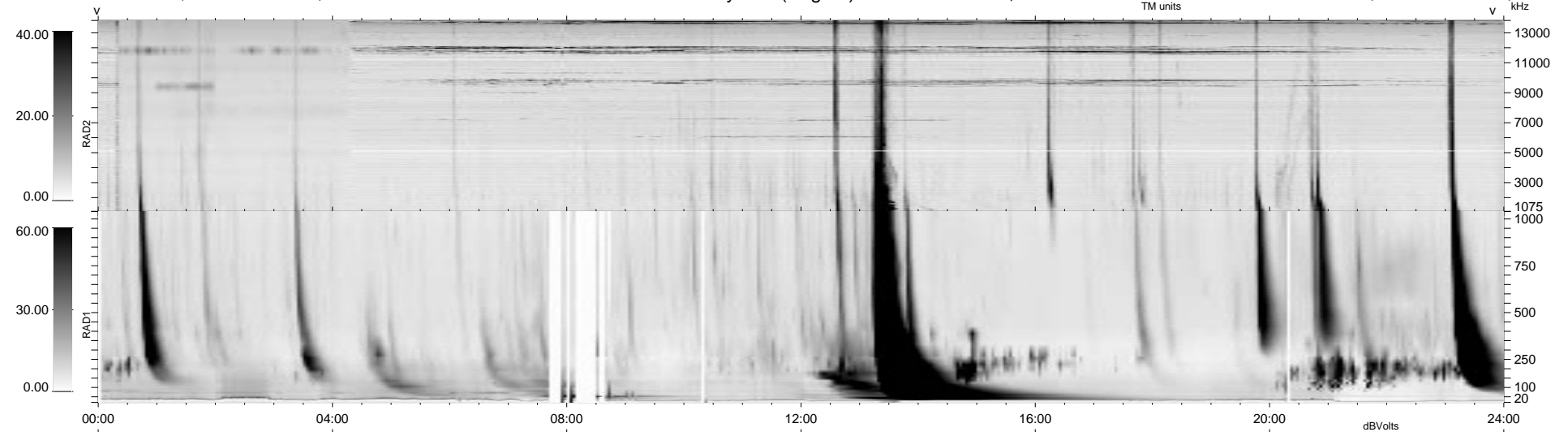


46 bad + 893 good MF/939MF projected (95%) - 0 missing MFs
 Avg interval = 180 secs
 Re = 198.38 (193.39, 35.74, 26.01 GSE)

1.7d VMS-SunOS LZ version = v01
 DAILY Tue Sep 16, 2008
 Re = 196.98 (191.76, 37.22, 25.42 GSE)

WIND/WAVES Summary Plot (Page 1) for 27-MAY-1998, DOY = 147



RAD2
 Antenna Ey
 Mode LIN(1) LIN(8) LIN(1)
 SUM/SEP SUM SEP SUM
 Toggle OFF
 RAD1
 Antenna
 Mode
 SUM/SEP
 Toggle
 TNR
 Antenna ExEy
 Mode A-32
 Sweep ABCDE