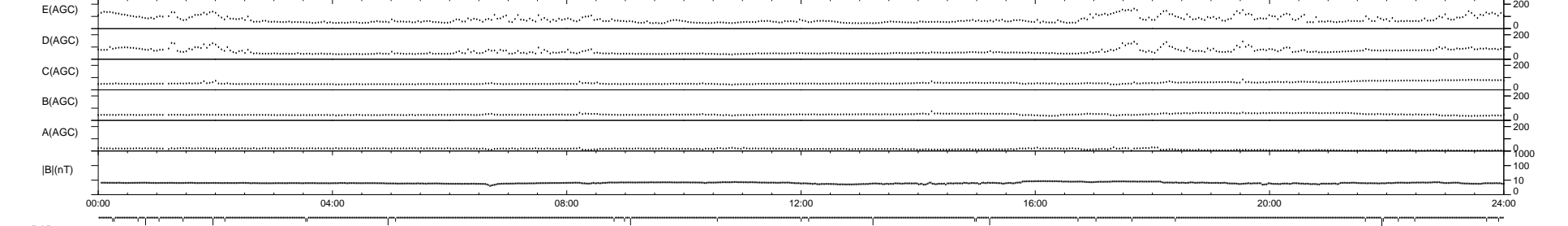
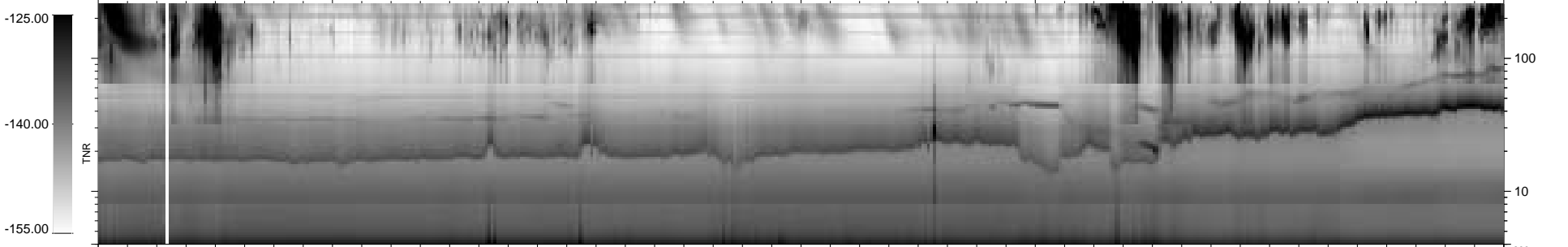
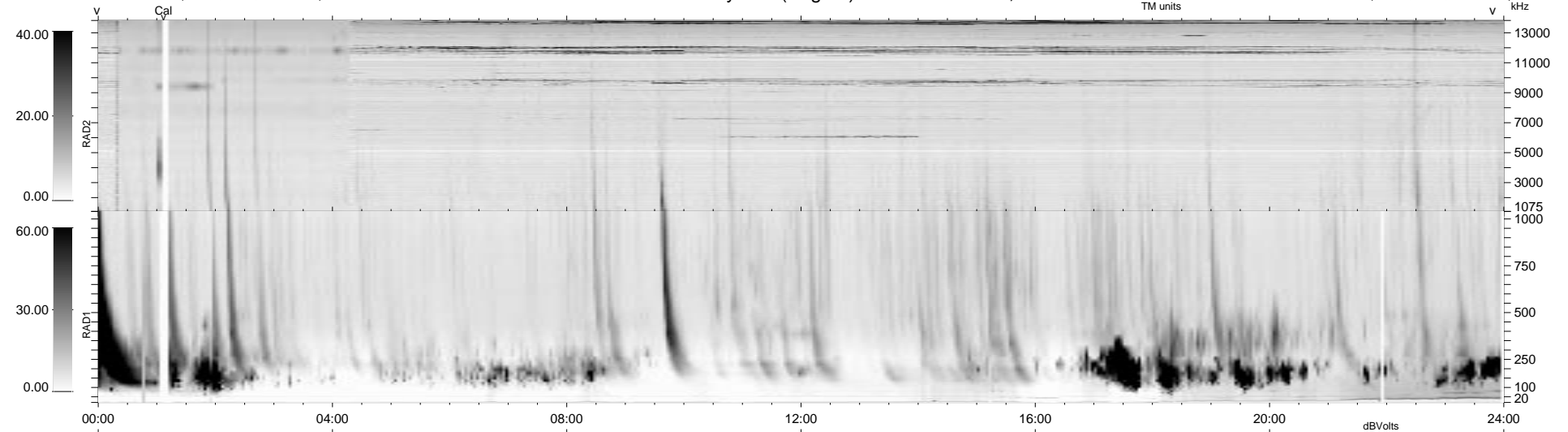


33 bad + 906 good MF/939MF projected (96%) - 0 missing MFs  
 Avg interval = 180 secs  
 Re = 199.68 (194.92, 34.25, 26.56 GSE)

1.7d VMS-SunOS LZ version = v01  
 DAILY Tue Sep 16, 2008  
 Re = 198.39 (193.40, 35.73, 26.01 GSE)

### WIND/WAVES Summary Plot (Page 1) for 26-MAY-1998, DOY = 146



```

RAD2
Antenna Ey .....
Mode LIN(1) LIN(8) LIN(1)
SUM/SEP SUM SEP SUM
Toggle OFF .....

RAD1
Antenna Ex .....
Mode LIS(2,3)
SUM/SEP SUM
Toggle OFF .....

TNR
Antenna ExEy .....
Mode A-32 .....
Sweep ABCDE .....
  
```