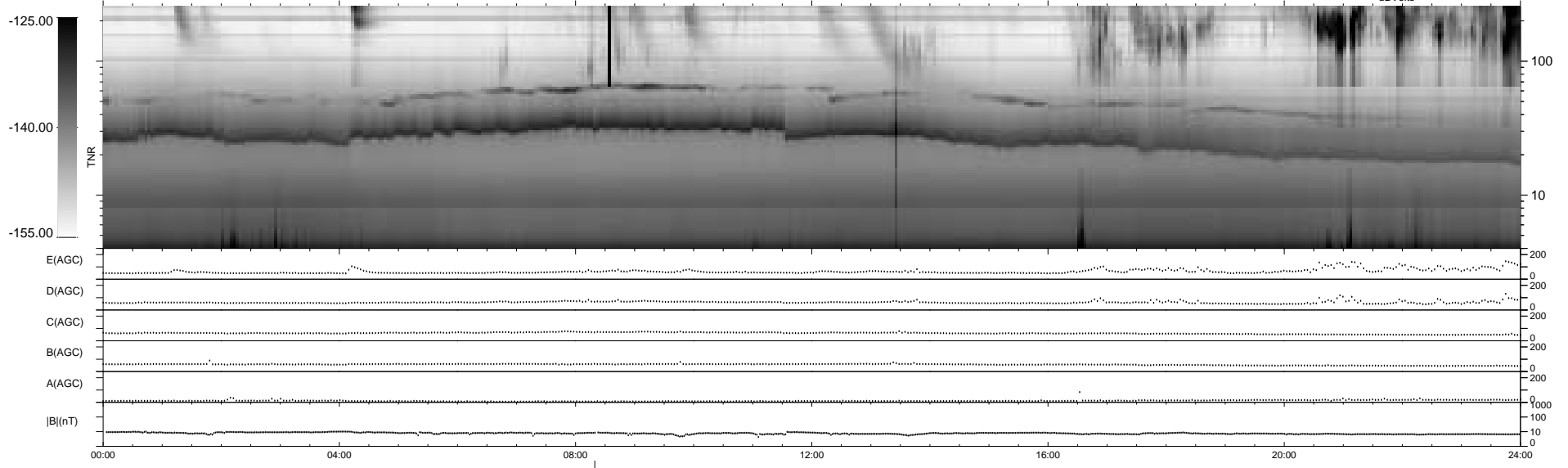
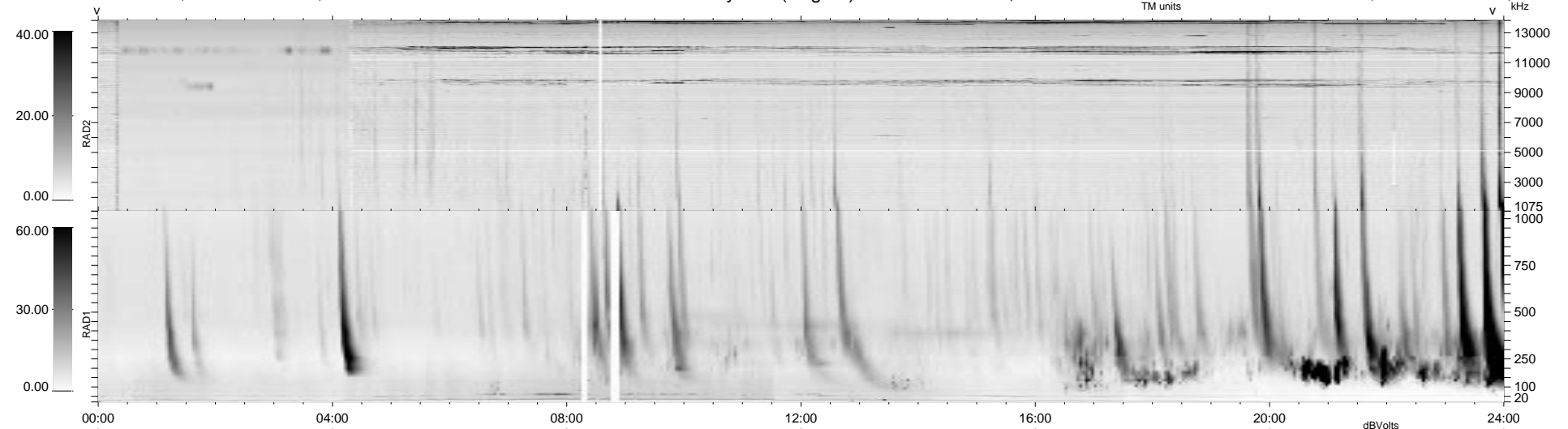


36 bad + 902 good MF/939MF projected (96%) - 1 missing MF
 Avg interval = 180 secs
 Re = - 200.88 (196.34, 32.75, 27.07 GSE)

1.7d VMS-SunOS LZ version = v01
 DAILY Tue Sep 16, 2008
 Re = 199.69 (194.93, 34.24, 26.56 GSE)

WIND/WAVES Summary Plot (Page 1) for 25-MAY-1998, DOY = 145



```

RAD2
Antenna Ey ..... LIN(1) ..... LIN(8) ..... LIN(1) .....
Mode LIN(1) LIN(8) LIN(1)
SUM/SEP SUM SEP SUM
Toggle OFF SEP SUM

RAD1
Antenna Ex .....
Mode LIS(2,3)
SUM/SEP SUM
Toggle OFF

TNR
Antenna ExEy .....
Mode A-32
Sweep ABCDE
  
```