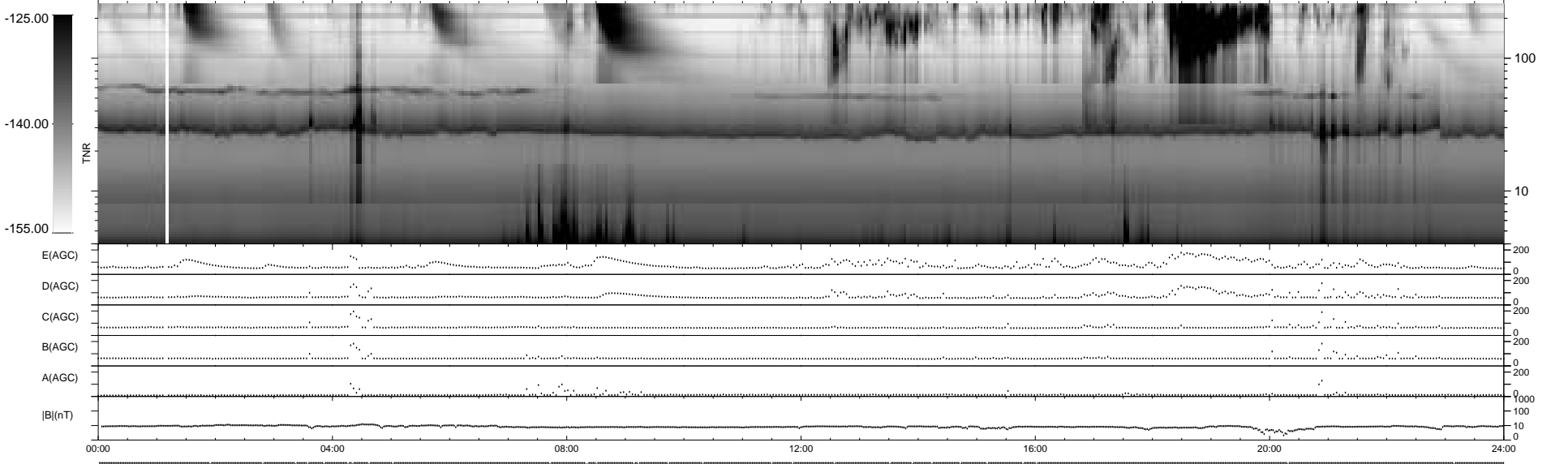
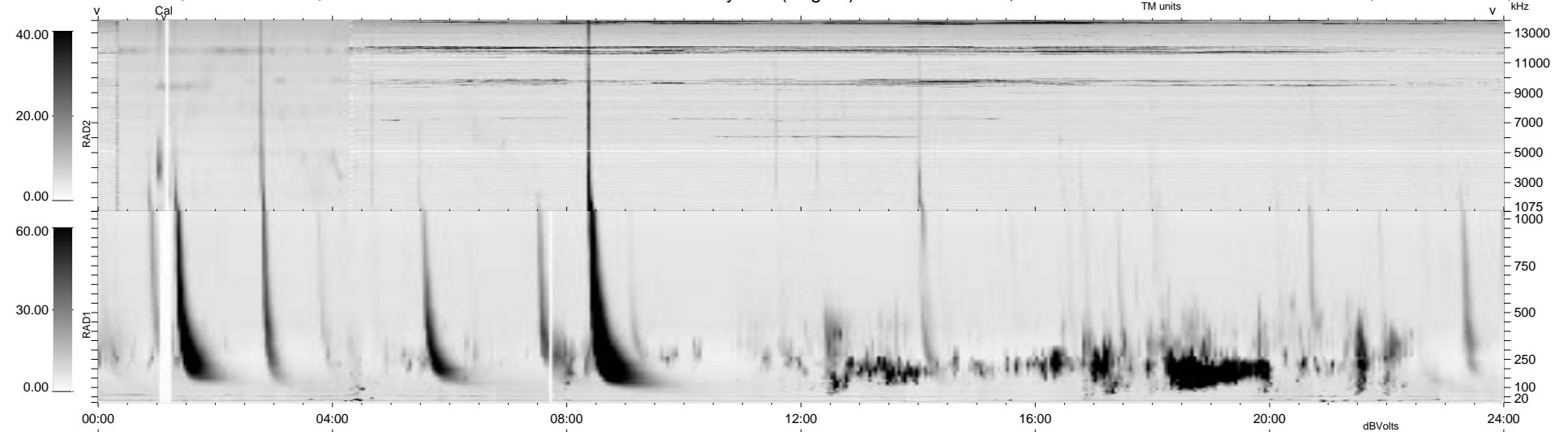


29 bad + 910 good MF/939MF projected (96%) - 0 missing MFs
 Avg interval = 180 secs
 Re = 201.99 (197.64, 31.26, 27.53 GSE)

1.7d VMS-SunOS LZ version = v01
 DAILY Tue Sep 16, 2008
 Re = 200.89 (196.35, 32.74, 27.07 GSE)

WIND/WAVES Summary Plot (Page 1) for 24-MAY-1998, DOY = 144



```

RAD2
Antenna Ey .....
Mode LIN(1) LIN(8) LIN(1)
SUM/SEP SUM SEP SUM
Toggle OFF .....
RAD1
Antenna Ex .....
Mode LIS(2,3)
SUM/SEP SUM
Toggle OFF .....
TNR
Antenna ExEy .....
Mode A-32 .....
Sweep ABCDE .....
  
```