

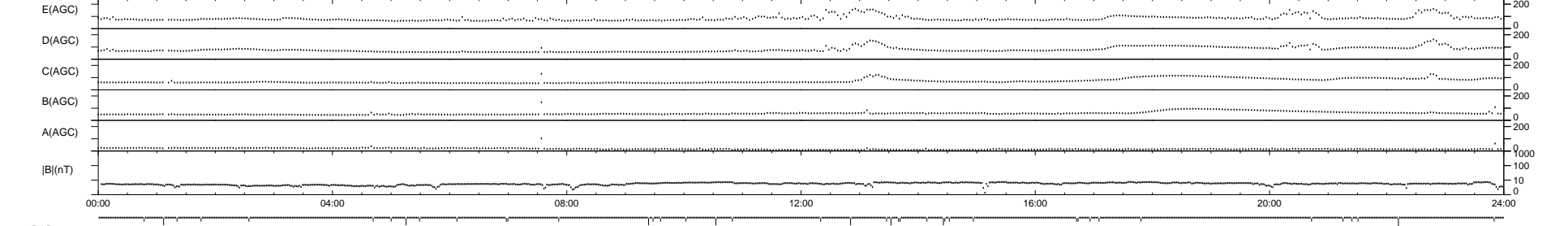
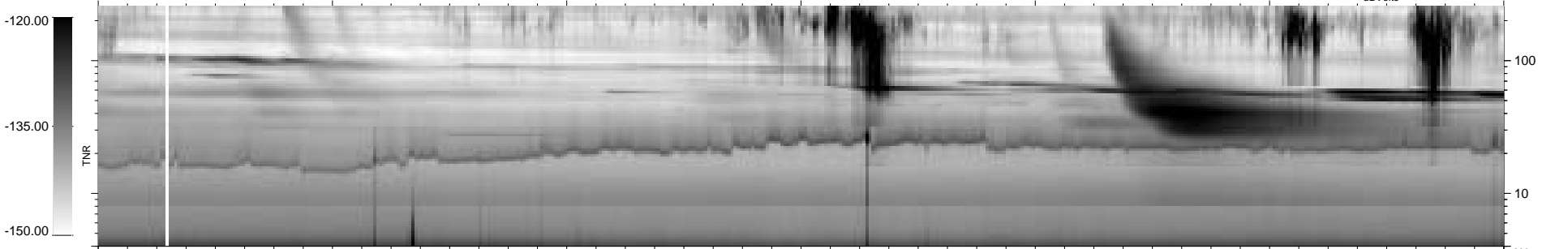
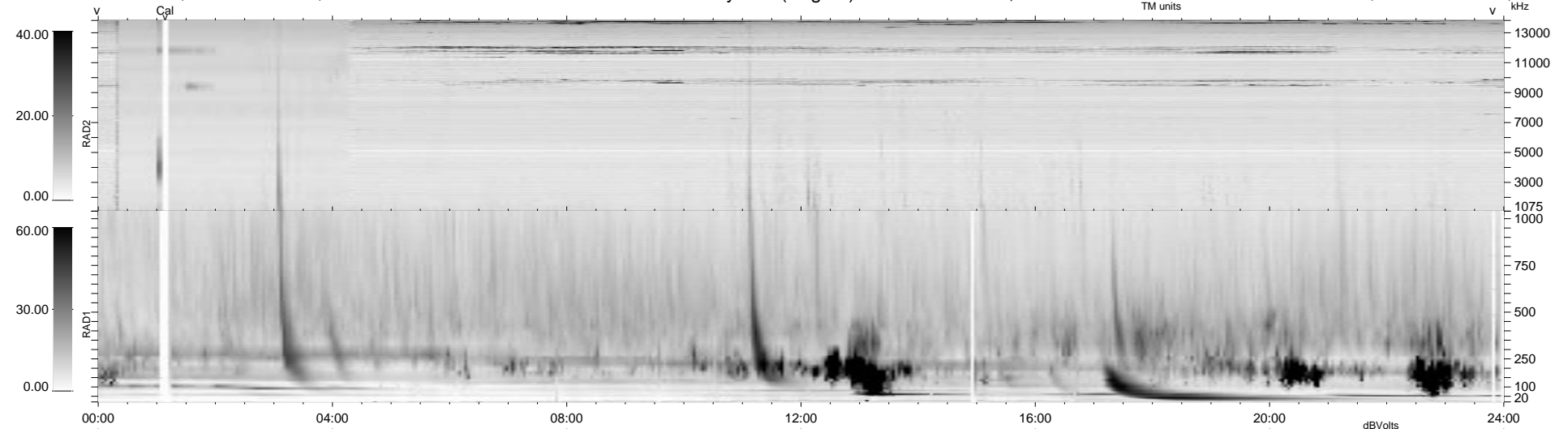
41 bad + 898 good MF/939MF projected (95%) - 0 missing MFs  
 Avg interval = 180 secs  
 Re = -207.14 (203.76, 22.88, 29.37 GSE)

1.7d VMS-SunOS

LZ version = v01

### WIND/WAVES Summary Plot (Page 1) for 18-MAY-1998, DOY = 138

DAILY Tue Sep 16, 2008  
 Re = 206.41 (202.91, 24.17, 29.18 GSE)



```

RAD2
Antenna Ey .....
Mode LIN(1) LIN(8) LIN(1)
SUM/SEP SUM SEP SUM
Toggle OFF .....

RAD1
Antenna Ex .....
Mode LIS(2,3)
SUM/SEP SUM
Toggle OFF .....

TNR
Antenna ExEy .....
Mode A-32 .....
Sweep ABCDE .....
  
```