

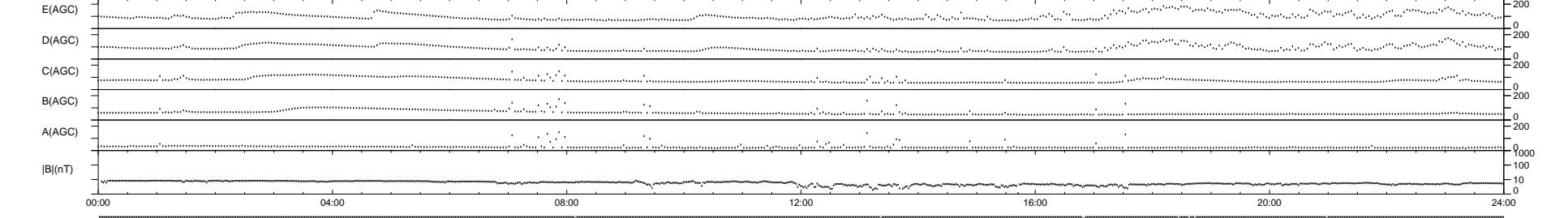
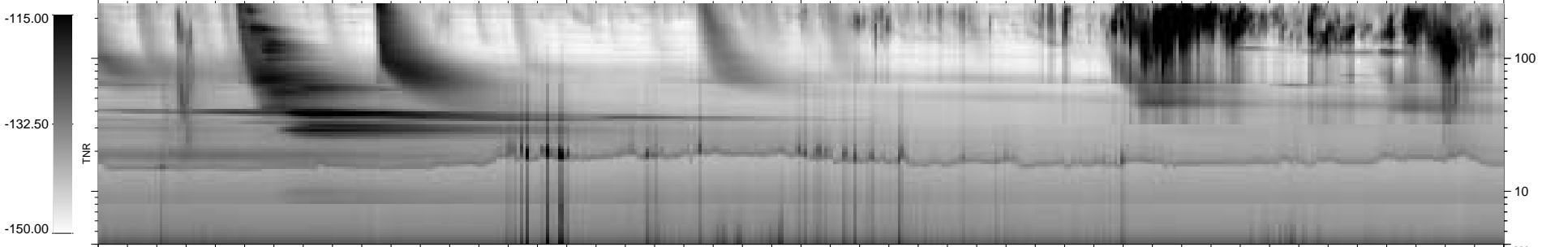
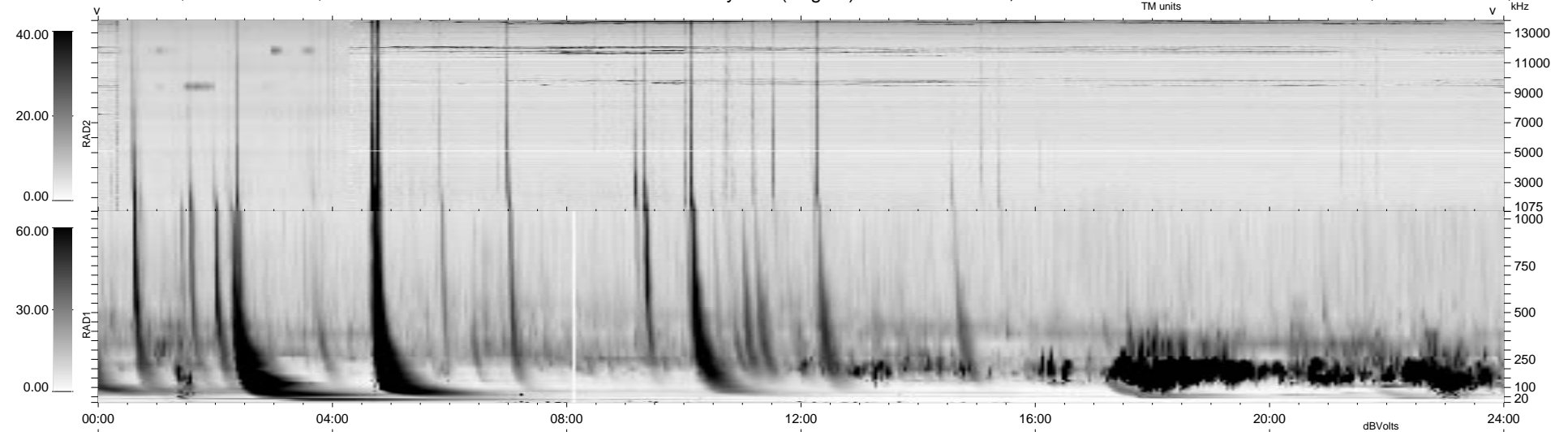
8 bad + 931 good MF/939MF projected (99%) - 0 missing MFs  
 Avg interval = 180 secs  
 Re = - 207.83 (204.59, 21.61, 29.51 GSE)

1.7d VMS-SunOS

LZ version = v01

WIND/WAVES Summary Plot (Page 1) for 17-MAY-1998, DOY = 137

DAILY Tue Sep 16, 2008  
 Re = 207.14 (203.77, 22.87, 29.37 GSE)



RAD2  
 Antenna Ey .....  
 Mode LIN(1) LIN(8) LIN(1)  
 SUM/SEP SUM SEP SUM  
 Toggle OFF .....  
 RAD1  
 Antenna Ex .....  
 Mode LIS(2,3)  
 SUM/SEP SUM  
 Toggle OFF .....  
 TNR  
 Antenna ExEy .....  
 Mode A-32 .....  
 Sweep ABCDE .....