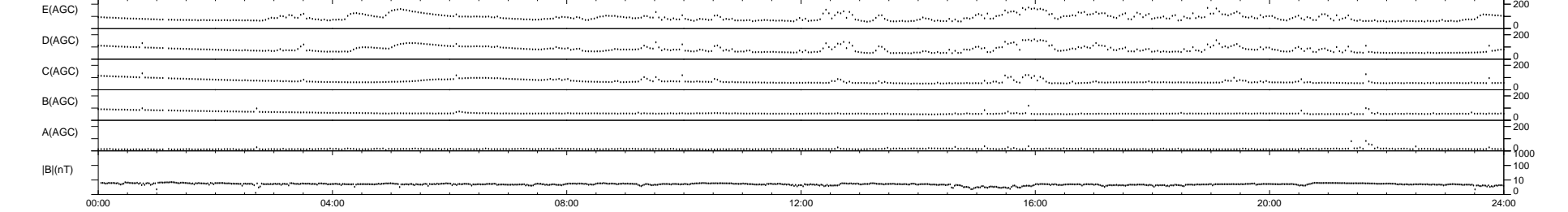
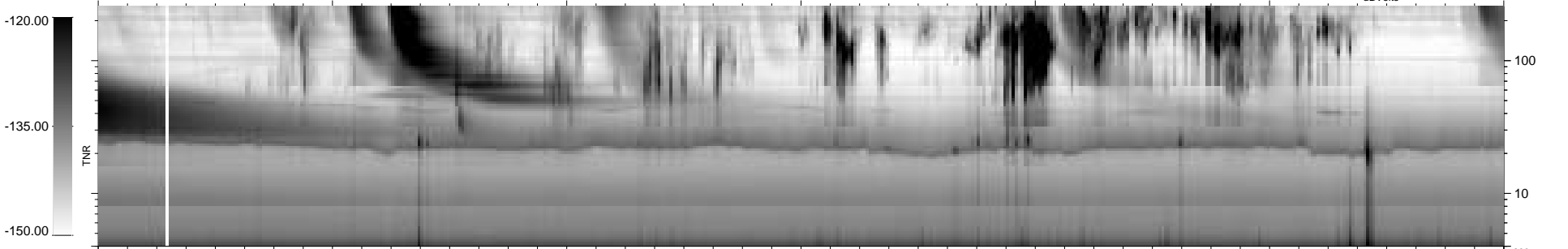
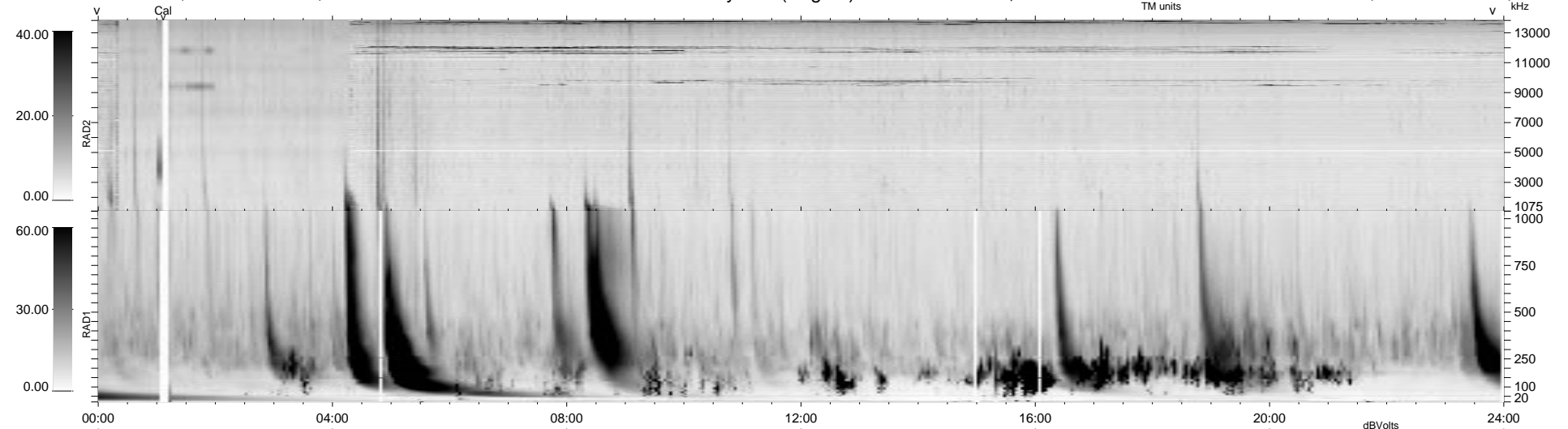


12 bad + 927 good MF/939MF projected (98%) - 0 missing MFs
 Avg interval = 180 secs
 Re = - 211.11 (208.45, 15.69, 29.48 GSE)

1.7d VMS-SunOS LZ version = v01
 DAILY Tue Sep 16, 2008
 Re = 210.47 (207.70, 16.82, 29.58 GSE)

WIND/WAVES Summary Plot (Page 1) for 12-MAY-1998, DOY = 132



```

RAD2
Antenna Ey ..... LIN(1) ..... LIN(8) ..... LIN(1) .....
Mode LIN(1) ..... LIN(8) ..... LIN(1) .....
SUM/SEP SUM . . . SEP. . . . . SUM. . . . .
Toggle OFF ..... SEP. . . . . SUM. . . . .

RAD1
Antenna Ex .....
Mode LIS(2,3) .....
SUM/SEP SUM .....
Toggle OFF .....

TNR
Antenna ExEy .....
Mode A-32 .....
Sweep ABCDE .....
  
```