

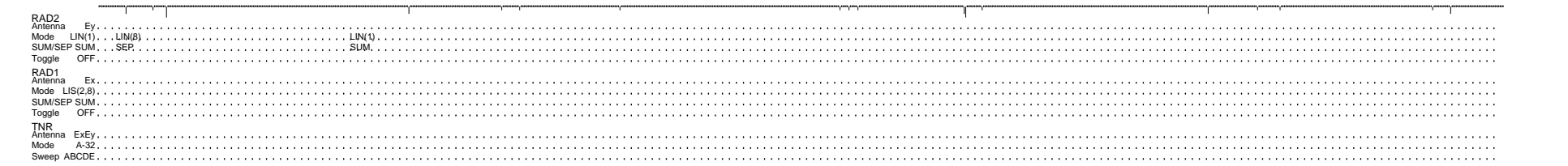
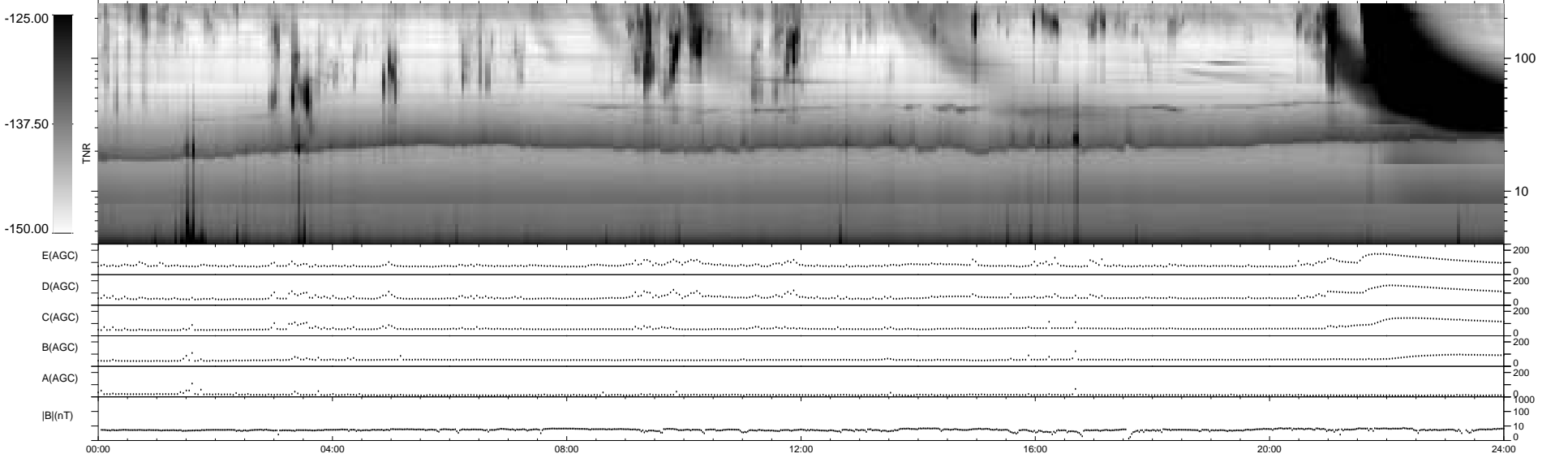
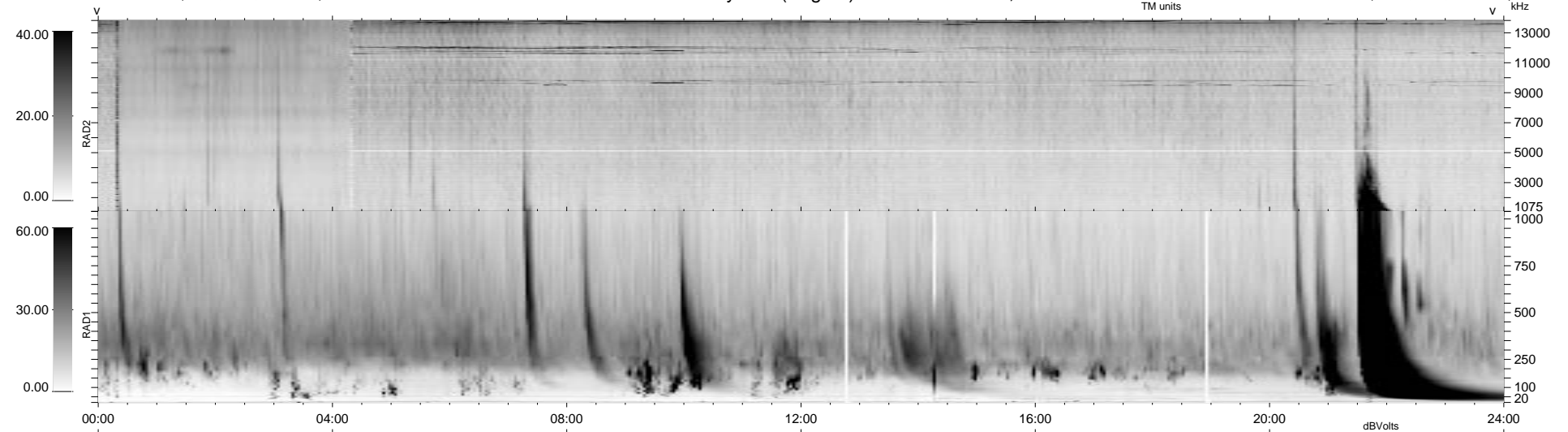
18 bad + 921 good MF/939MF projected (98%) - 0 missing MFs  
 Avg interval = 180 secs  
 Re = - 211.75 (209.20, 14.56, 29.33 GSE)

1.7d VMS-SunOS

LZ version = v01

WIND/WAVES Summary Plot (Page 1) for 11-MAY-1998, DOY = 131

DAILY Tue Sep 16, 2008  
 Re = 211.11 (208.46, 15.68, 29.48 GSE)



```

RAD2
Antenna Ey ..... LIN(1) ..... LIN(8) ..... LIN(1) .....
Mode LIN(1) ..... LIN(8) ..... LIN(1) .....
SUM/SEP SUM ..... SEP ..... SUM .....
Toggle OFF .....

RAD1
Antenna Ex .....
Mode LIS(2,3) .....
SUM/SEP SUM .....
Toggle OFF .....

TNR
Antenna ExEy .....
Mode A-32 .....
Sweep ABCDE .....
  
```