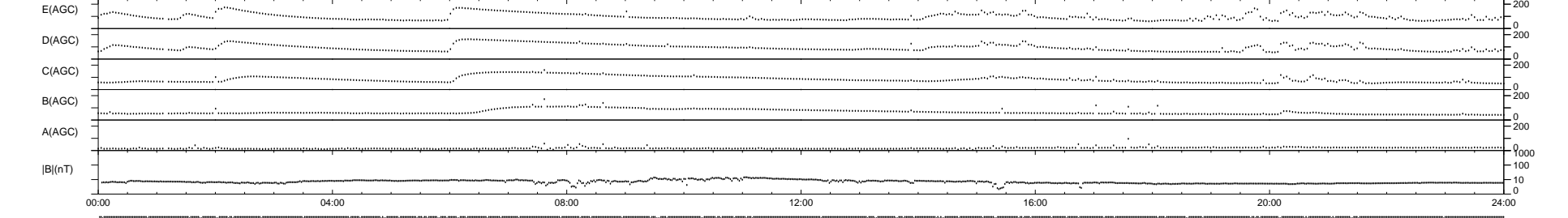
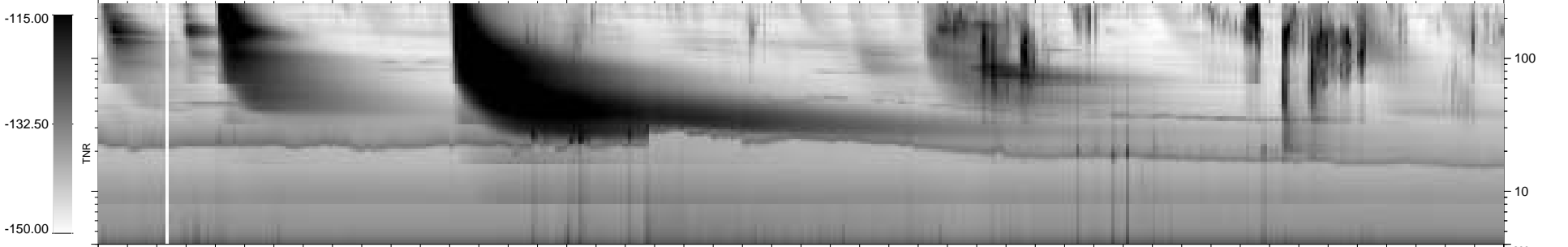
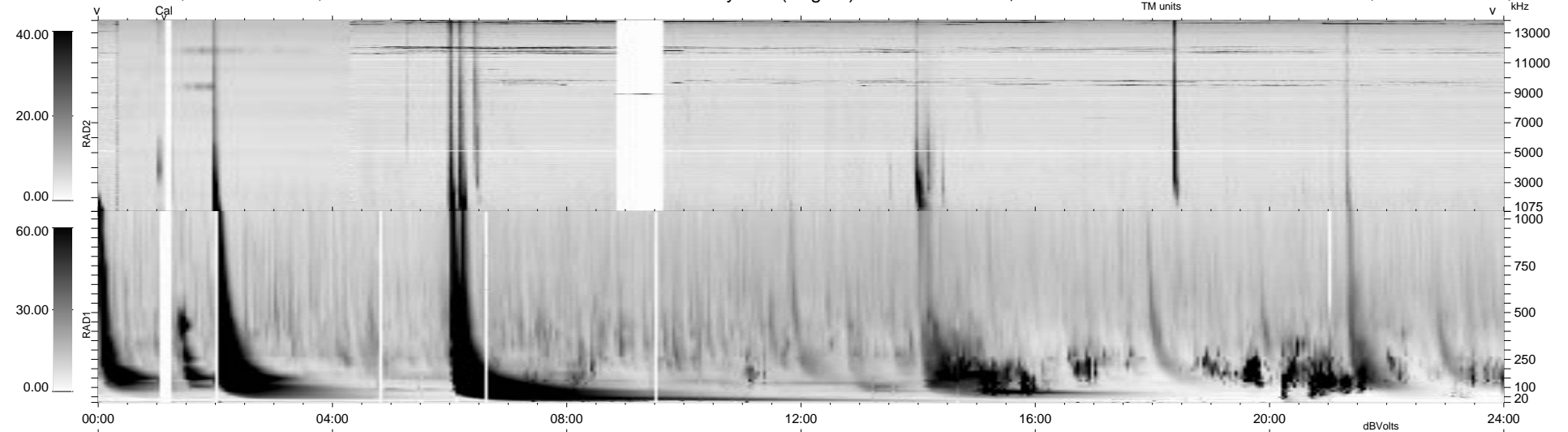


87 bad + 852 good MF/939MF projected (90%) - 0 missing MFs
 Avg interval = 180 secs
 Re = 213.67 (211.45, 11.17, 28.60 GSE)

1.7d VMS-SunOS LZ version = v01
 DAILY Tue Sep 16, 2008
 Re = 213.03 (210.71, 12.30, 28.88 GSE)

WIND/WAVES Summary Plot (Page 1) for 08-MAY-1998, DOY = 128



```

RAD2
Antenna  Ey
Mode     LIN(1) . . . LIN(8) . . . LIN(1)
SUM/SEP SUM . . . SEP . . . SUM . . .
Toggle  OFF
-----
RAD1
Antenna  Ex
Mode     LIS(2,3)
SUM/SEP SUM . . . SEP . . . SUM . . .
Toggle  OFF
-----
TNR
Antenna  ExEy
Mode     A-32
Sweep   ABCDE
  
```