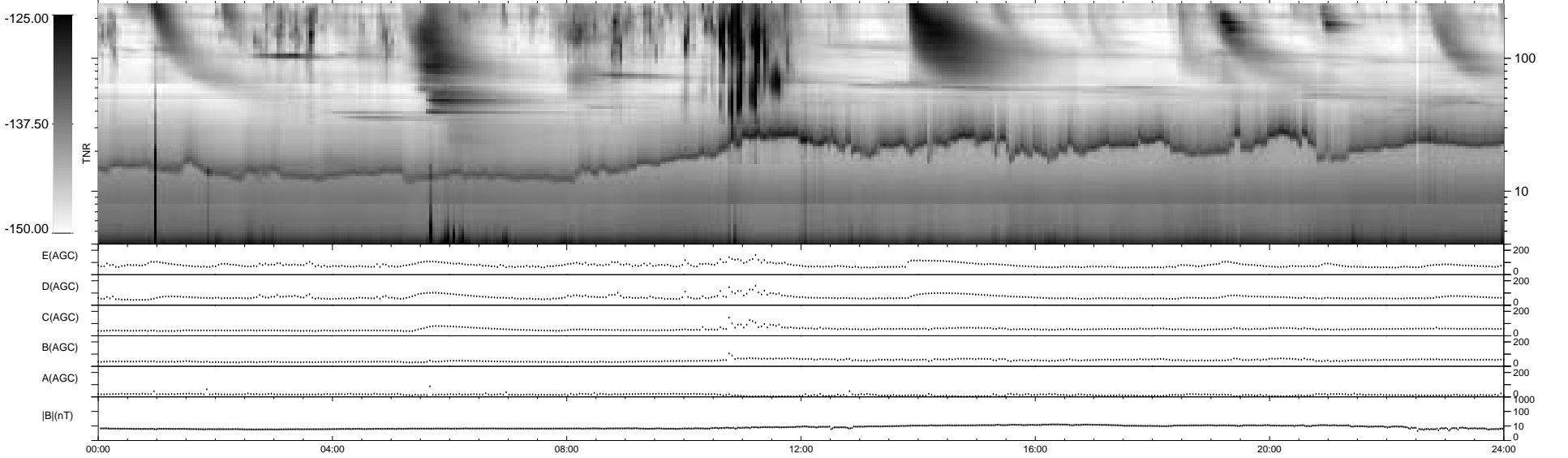
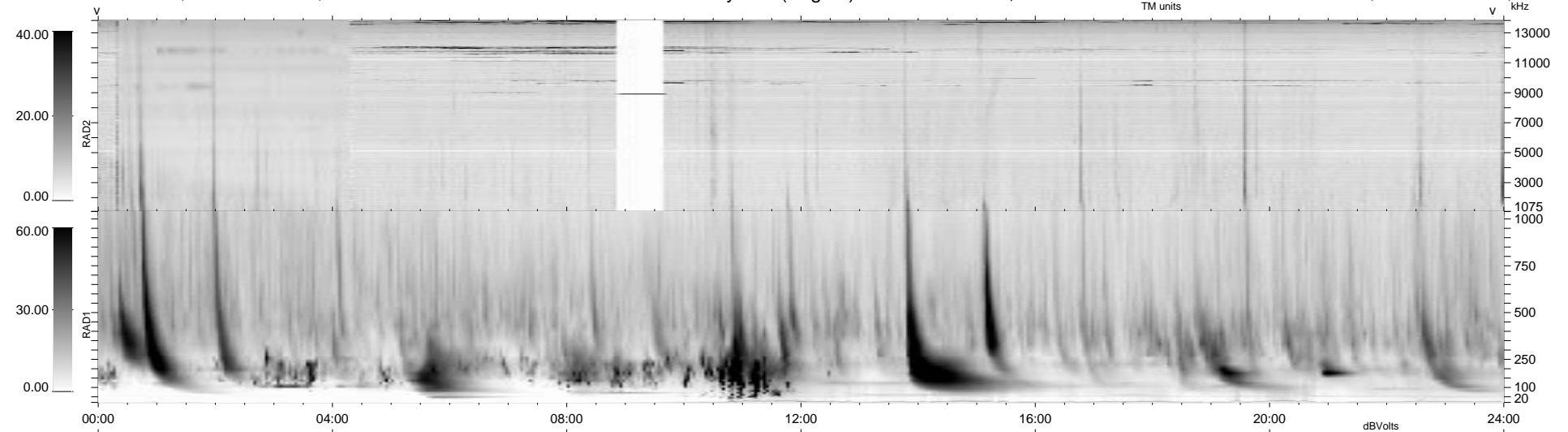


25 bad + 915 good MF/940MF projected (97%) - 0 missing MFs
 Avg interval = 180 secs
 Re = - 214.31 (212.20, 10.03, 28.26 GSE)

1.7d VMS-SunOS LZ version = v01
 DAILY Tue Sep 16, 2008
 Re = 213.68 (211.46, 11.16, 28.59 GSE)

WIND/WAVES Summary Plot (Page 1) for 07-MAY-1998, DOY = 127



```

RAD2
Antenna Ey .....
Mode LIN(1) LIN(8) LIN(1) .....
SUM/SEP SUM SEP FIX(157) LIN(1) .....
Toggle OFF .....

RAD1
Antenna Ex .....
Mode LIS(2,3) .....
SUM/SEP SUM .....
Toggle OFF .....

TNR
Antenna ExEy .....
Mode A-32 .....
Sweep ABCDE .....
  
```