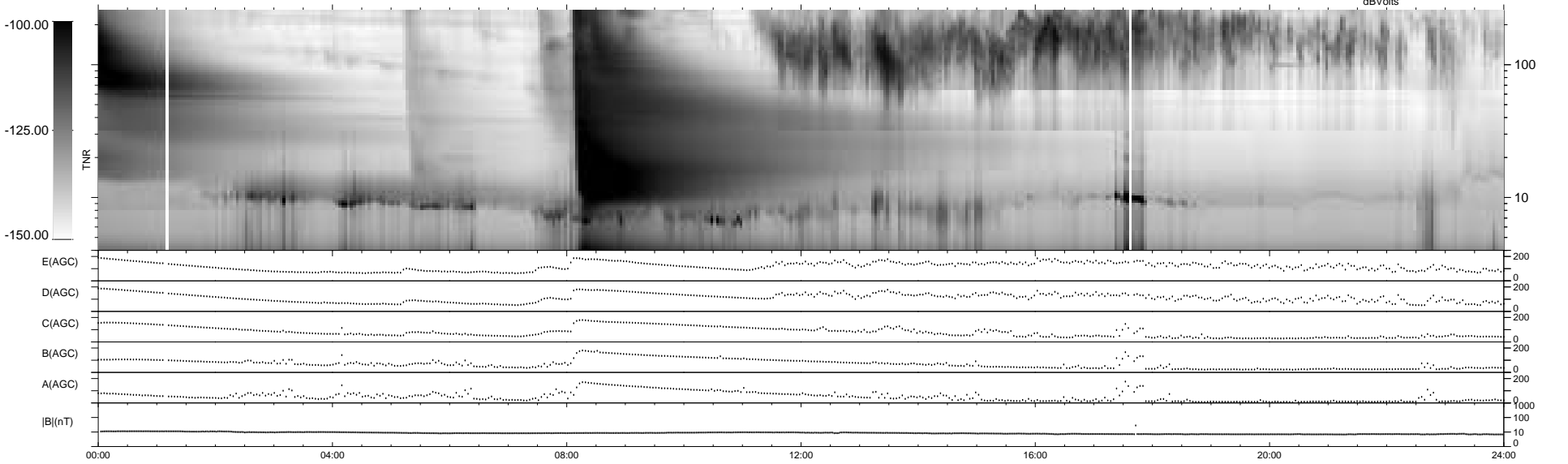
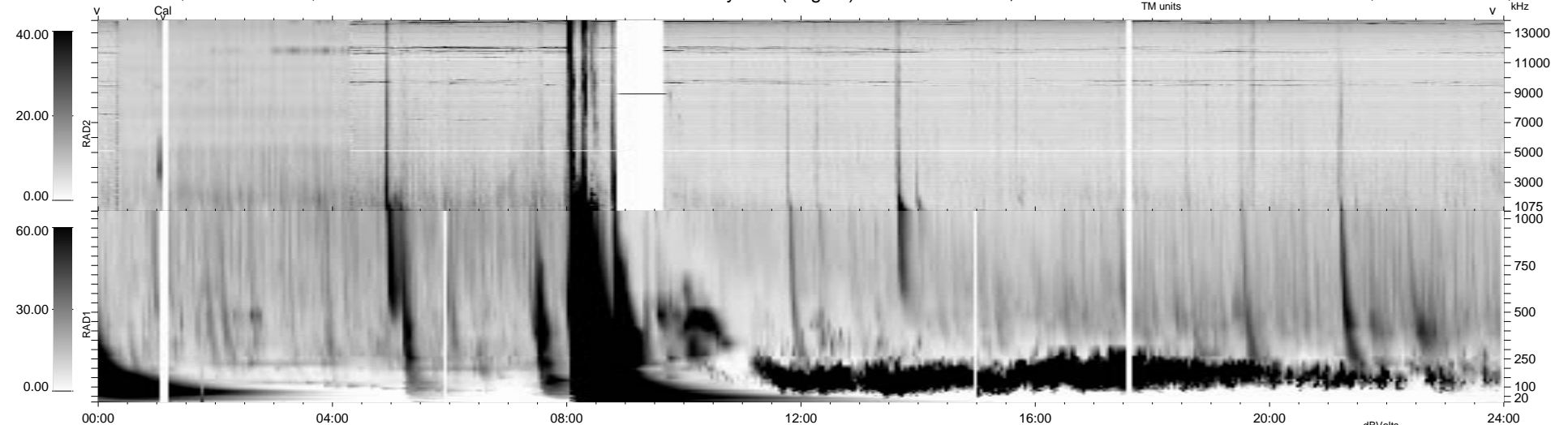


25 bad + 914 good MF/939MF projected (97%) - 0 missing MFs
 Avg interval = 180 secs
 Re = 214.95 (212.95, 8.88, 27.89 GSE)

1.7d VMS-SunOS LZ version = v01
 DAILY Tue Sep 16, 2008
 Re = 214.32 (212.21, 10.03, 28.26 GSE)

WIND/WAVES Summary Plot (Page 1) for 06-MAY-1998, DOY = 126



```

RAD2
Antenna Ey .....
Mode LIN(1) LIN(8) LIN(1)
SUM/SEP SUM SEP FIX(157) LIN(1)
Toggle OFF .....

RAD1
Antenna Ex .....
Mode LIS(2,3)
SUM/SEP SUM
Toggle OFF .....

TNR
Antenna ExEy .....
Mode A-32 .....
Sweep ABCDE .....
  
```