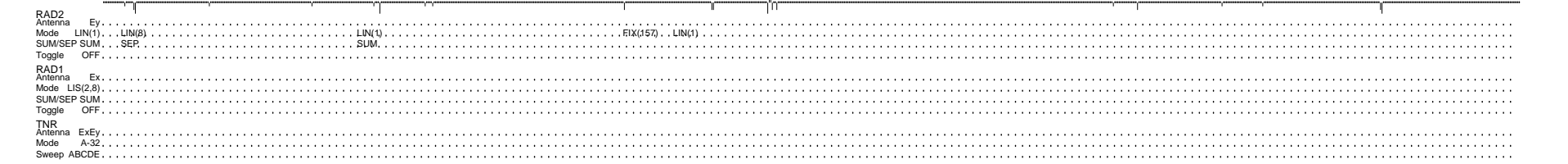
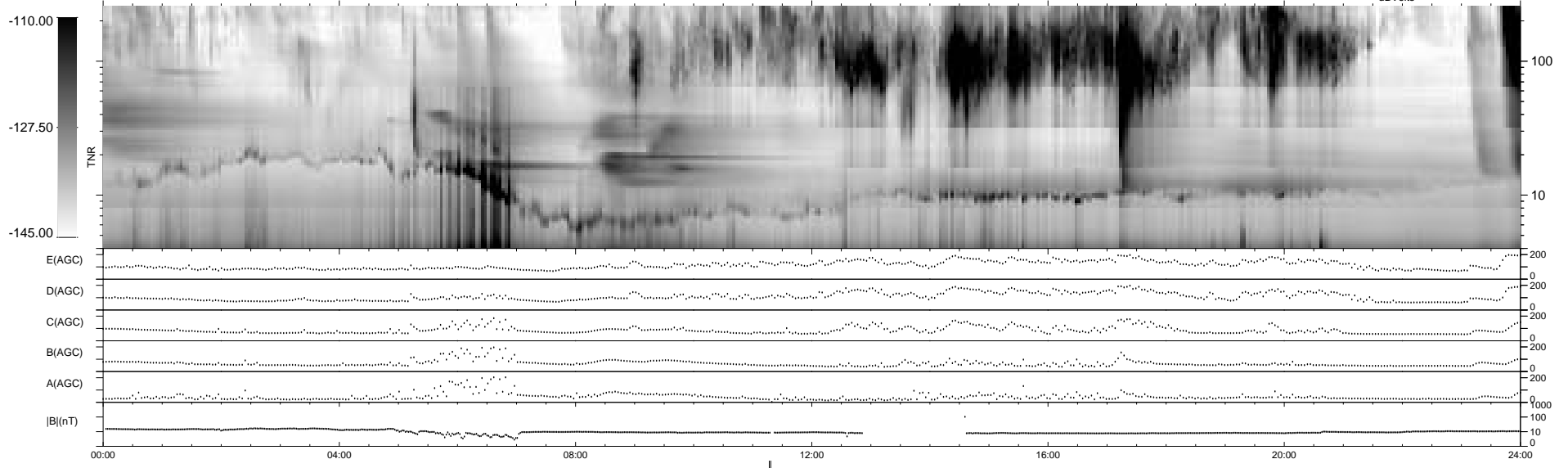
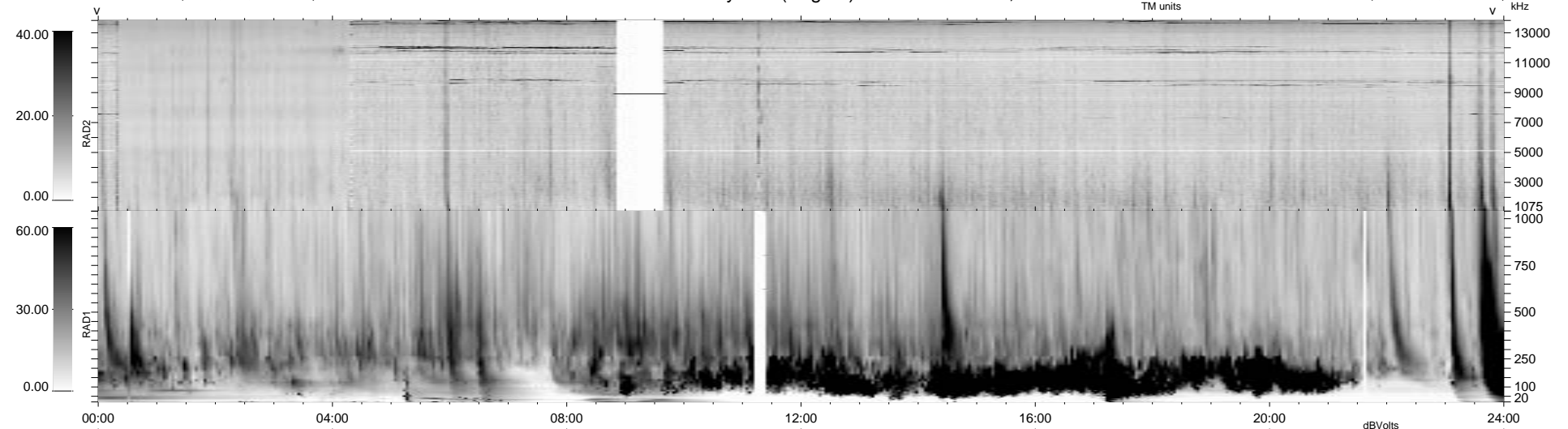


21 bad + 916 good MF/939MF projected (97%) - 2 missing MFs  
 Avg interval = 180 secs  
 Re = 215.58 (213.69, 7.71, 27.47 GSE)

1.7d VMS-SunOS LZ version = v01  
 DAILY Tue Sep 16, 2008  
 Re = 214.95 (212.95, 8.88, 27.88 GSE)

### WIND/WAVES Summary Plot (Page 1) for 05-MAY-1998, DOY = 125



```

RAD2
Antenna Ey .....
Mode LIN(1) LIN(8) LIN(1) FIX(157) LIN(1) .....
SUM/SEP SUM SEP SUM .....
Toggle OFF .....

RAD1
Antenna Ex .....
Mode LIS(2,3) .....
SUM/SEP SUM .....
Toggle OFF .....

TNR
Antenna ExEy .....
Mode A-32 .....
Sweep ABCDE .....
  
```