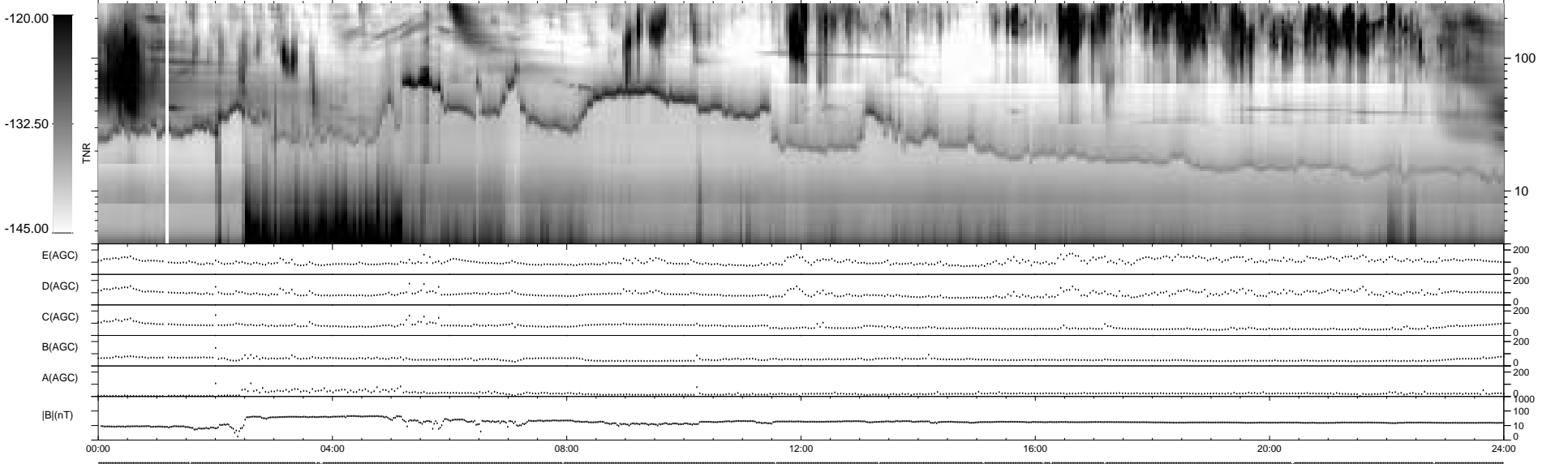
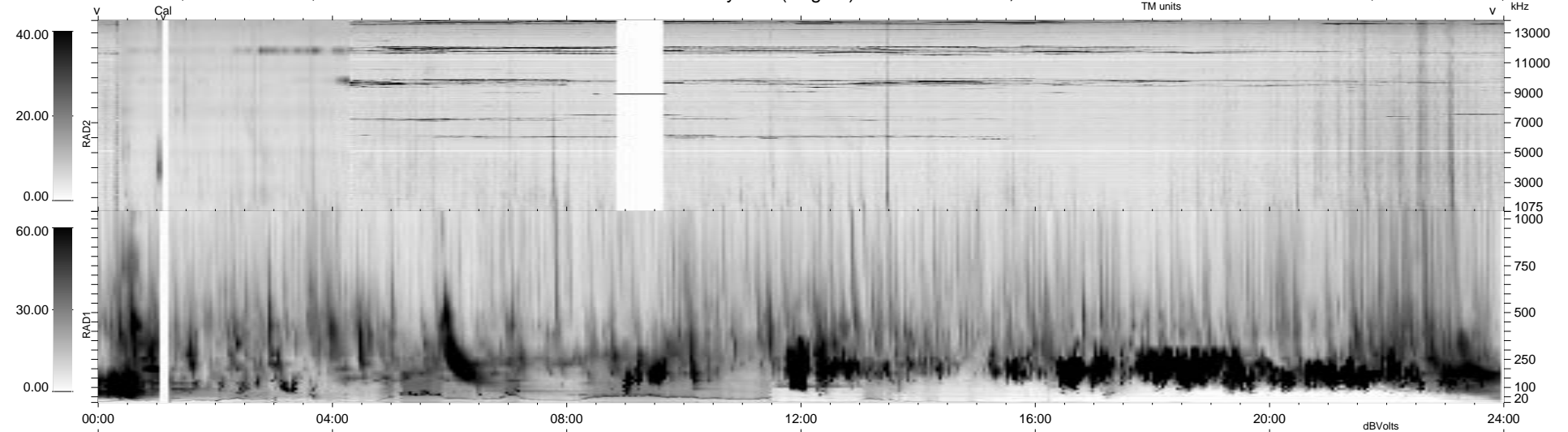


14 bad + 925 good MF/939MF projected (98%) - 0 missing MFs
 Avg interval = 180 secs
 Re = - 216.21 (214.42, 6.51, 27.01 GSE)

1.7d VMS-SunOS LZ version = v01
 DAILY Tue Sep 16, 2008
 Re = 215.59 (213.69, 7.70, 27.47 GSE)

WIND/WAVES Summary Plot (Page 1) for 04-MAY-1998, DOY = 124



```

RAD2
Antenna Ey .....
Mode LIN(1) . LIN(8) . . . LIN(1) . . .
SUM/SEP SUM . . SEP . . . SUM . . .
Toggle OFF .....

RAD1
Antenna Ex .....
Mode LIS(2,3) .....
SUM/SEP SUM .....
Toggle OFF .....

TNR
Antenna ExEy .....
Mode A-32 .....
Sweep ABCDE .....
  
```