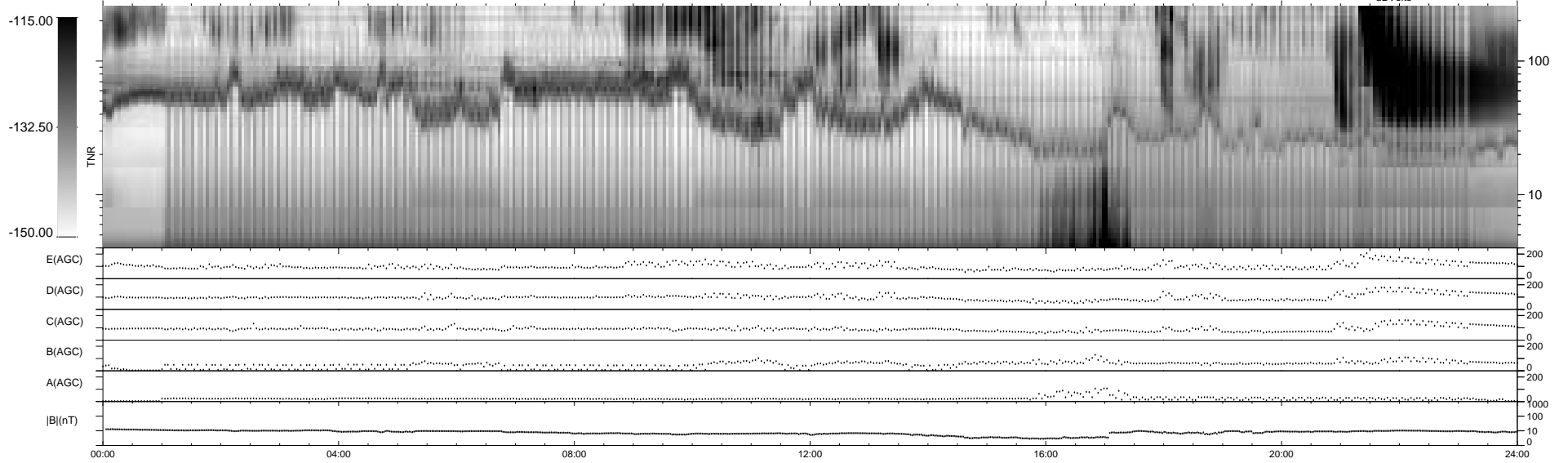
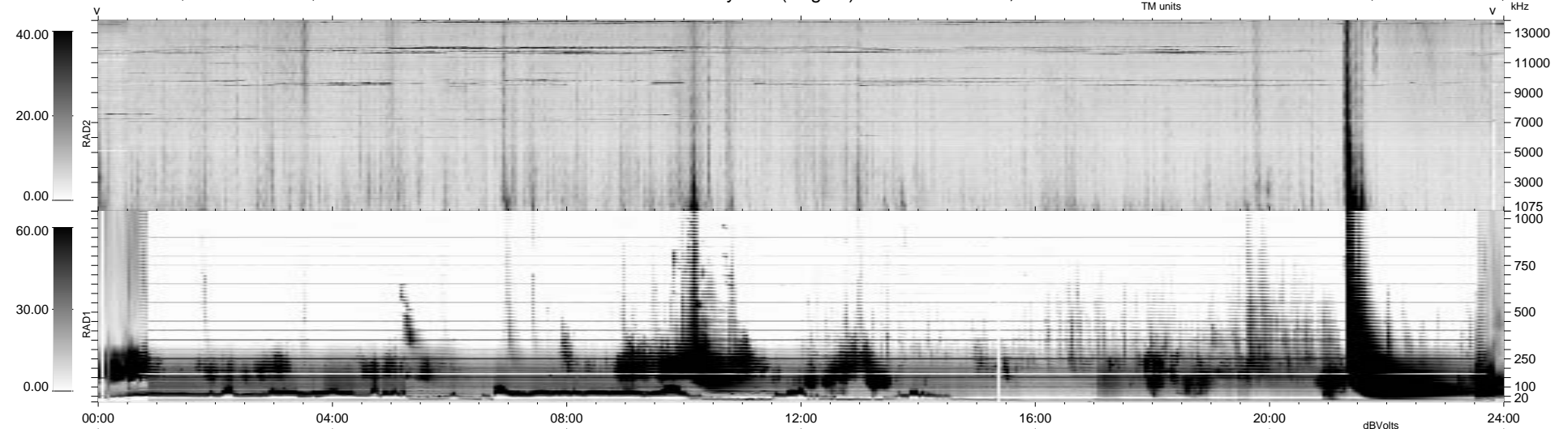


24 bad + 915 good MF/939MF projected (97%) - 0 missing MFs
 Avg interval = 180 secs
 Re = - 216.83 (215.13, 5.30, 26.52 GSE)

1.7d VMS-SunOS LZ version = v01
 DAILY Tue Sep 16, 2008
 Re = 216.21 (214.42, 6.51, 27.01 GSE)

WIND/WAVES Summary Plot (Page 1) for 03-MAY-1998, DOY = 123



```

RAD2
Antenna Ey
Mode LIN(1)
SUM/SEP SUM
Toggle OFF

RAD1
Antenna Ex Ey
Mode LIS(2,3) LIN(1) LIS(2,3)
SUM/SEP SUM SEP SUM
Toggle OFF

TNR
Antenna ExEy
Mode A-32 AB-16 A-32
Sweep ABCDE
  
```