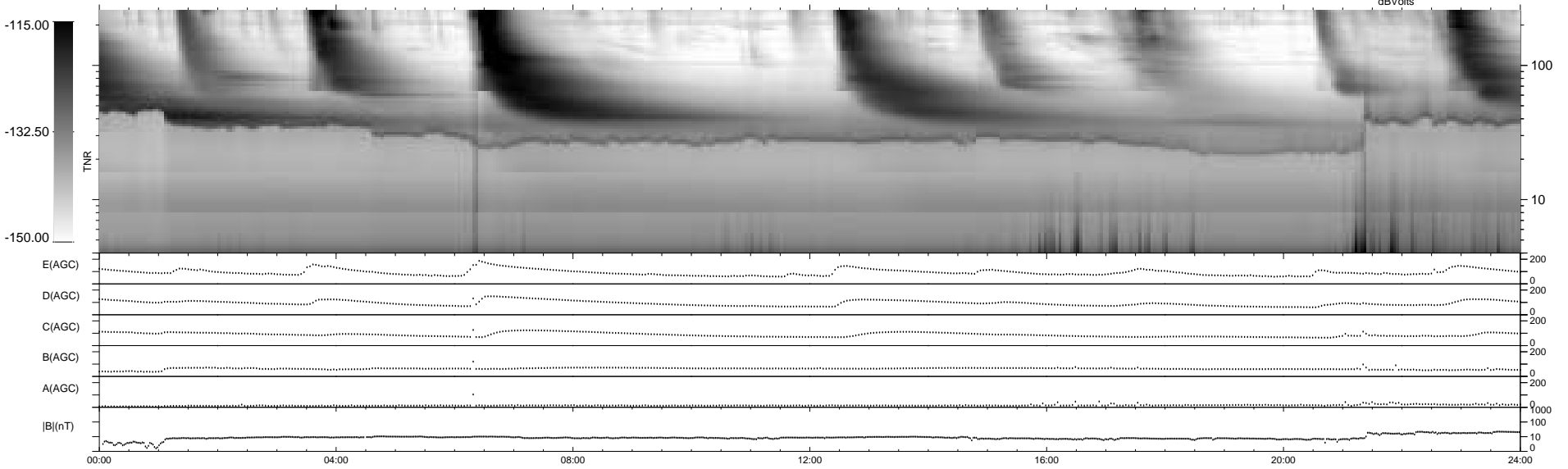
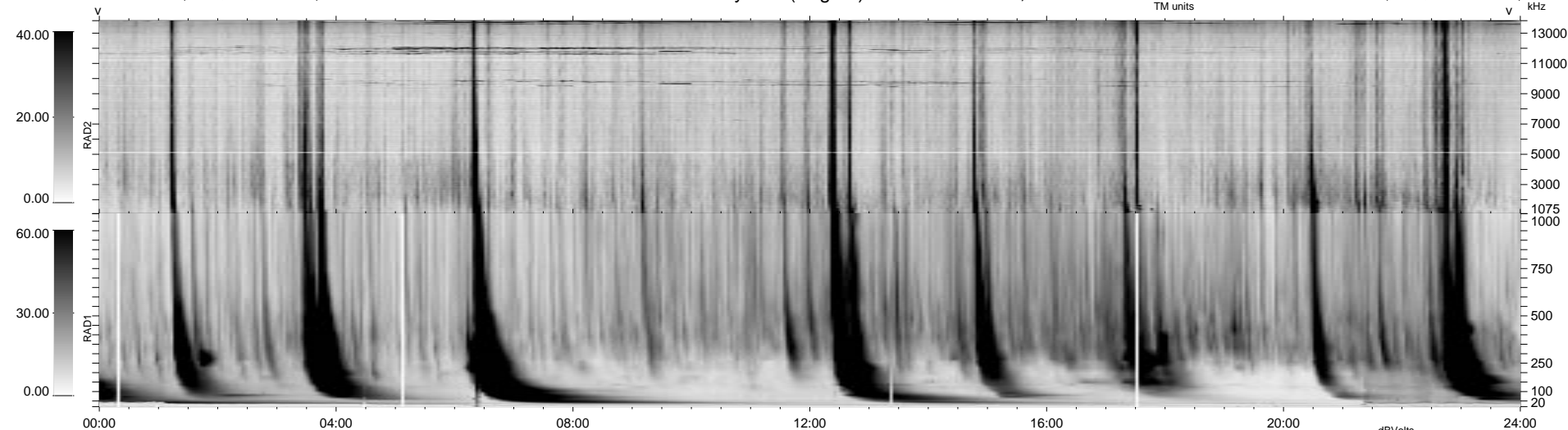


27 bad + 912 good MF/939MF projected (97%) - 0 missing MFs
 Avg interval = 180 secs
 Re = - 218.01 (216.50, 2.83, 25.43 GSE)

1.7d VMS-SunOS LZ version = v01

WIND/WAVES Summary Plot (Page 1) for 01-MAY-1998, DOY = 121

DAILY Tue Sep 16, 2008
 Re = 217.43 (215.84, 4.06, 25.99 GSE)



RAD2
 Antenna Ey
 Mode LIN(1)
 SUM/SEP SUM
 Toggle OFF

RAD1
 Antenna Ex
 Mode LIS(2,3)
 SUM/SEP SUM
 Toggle OFF

TNR
 Antenna ExEy
 Mode A-32
 Sweep ABCDE