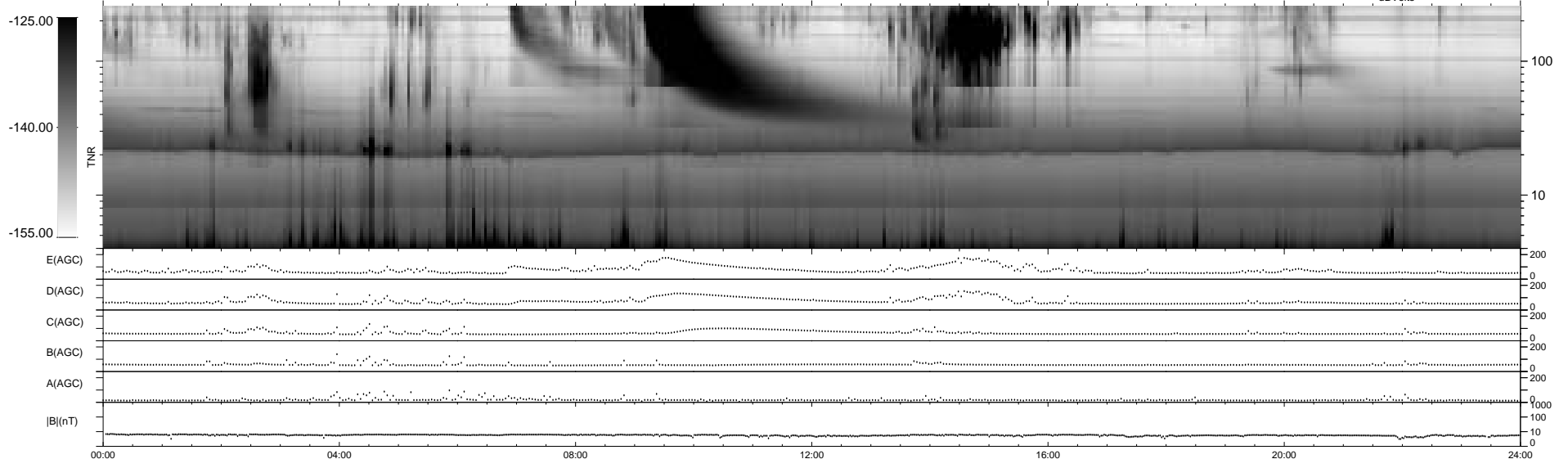
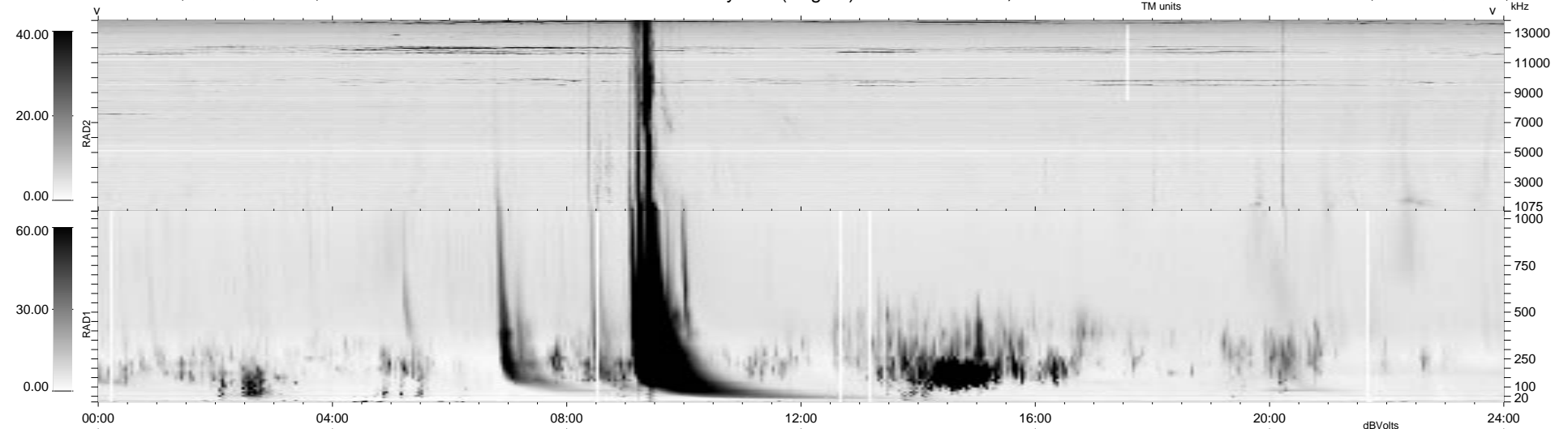


42 bad + 897 good MF/939MF projected (95%) - 0 missing MFs
 Avg interval = 180 secs
 Re = -220.03 (218.83, -2.22, 22.85 GSE)

1.7d VMS-SunOS LZ version = v01
 DAILY Tue Sep 16, 2008
 Re = 219.58 (218.32, -0.97, 23.53 GSE)

WIND/WAVES Summary Plot (Page 1) for 27-APR-1998, DOY = 117



RAD2
 Antenna Ey
 Mode LIN(1)
 SUM/SEP SUM
 Toggle OFF

RAD1
 Antenna Ex
 Mode LIS(2,3)
 SUM/SEP SUM
 Toggle OFF

TNR
 Antenna ExEy
 Mode A-32
 Sweep ABCDE