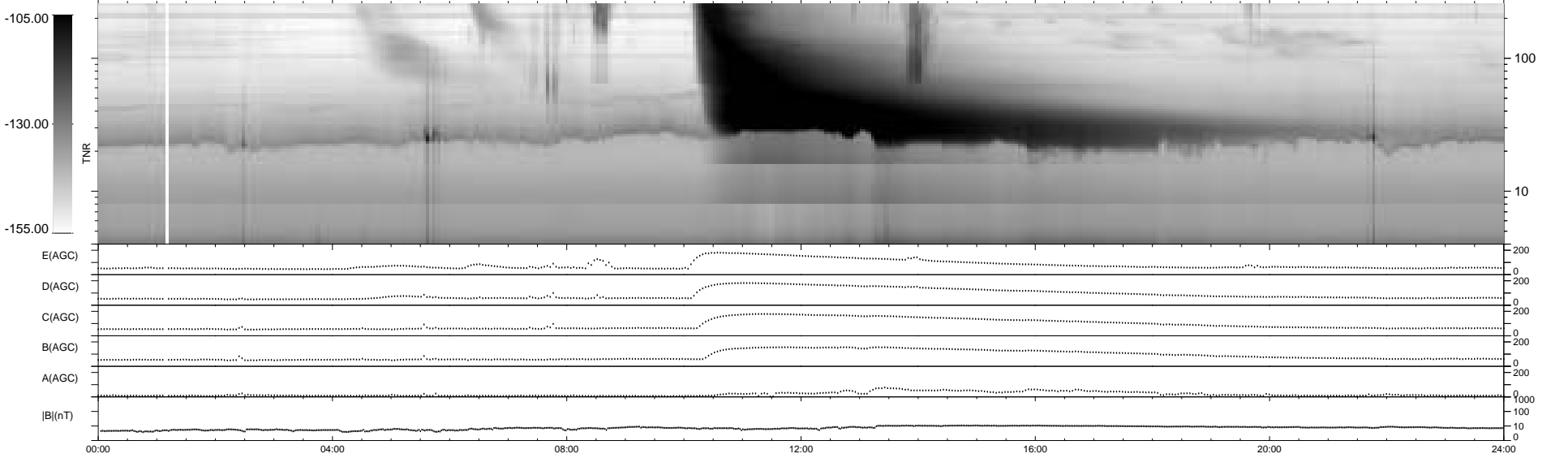
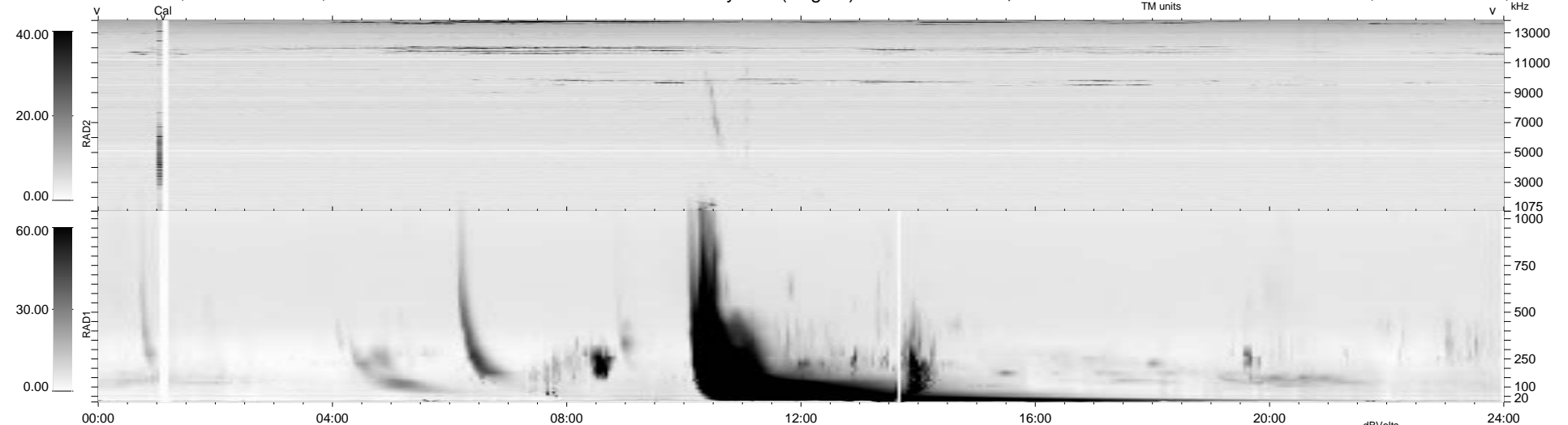


27 bad + 912 good MF/939MF projected (97%) - 0 missing MFs
 Avg interval = 180 secs
 Re = -222.13 (221.23, -10.10, 17.24 GSE)

1.7d VMS-SunOS LZ version = v01
 DAILY Tue Sep 16, 2008
 Re = 221.90 (220.97, -9.13, 18.11 GSE)

WIND/WAVES Summary Plot (Page 1) for 20-APR-1998, DOY = 110



RAD2
 Antenna Ey
 Mode LIN(1)
 SUM/SEP SUM
 Toggle OFF
 RAD1
 Antenna Ex
 Mode LIS(2,3)
 SUM/SEP SUM
 Toggle OFF
 TNR
 Antenna ExEy
 Mode A-32
 Sweep ABCDE