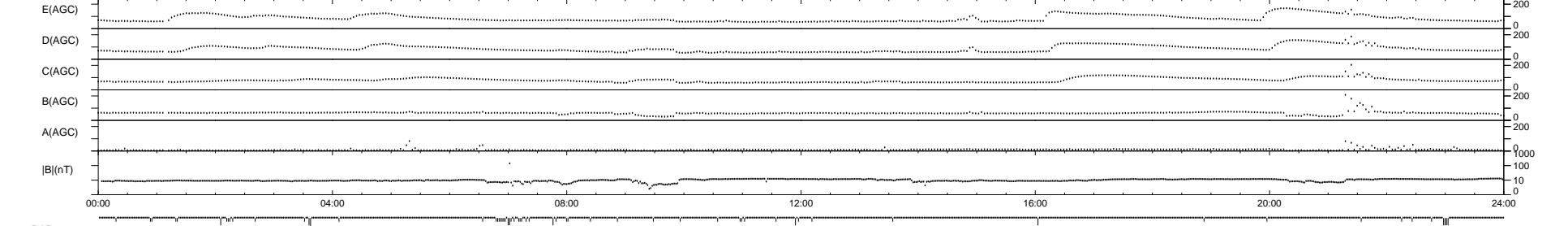
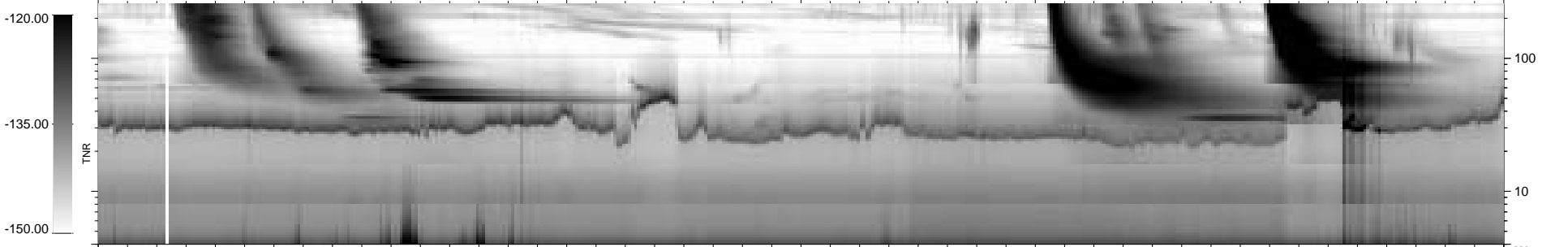
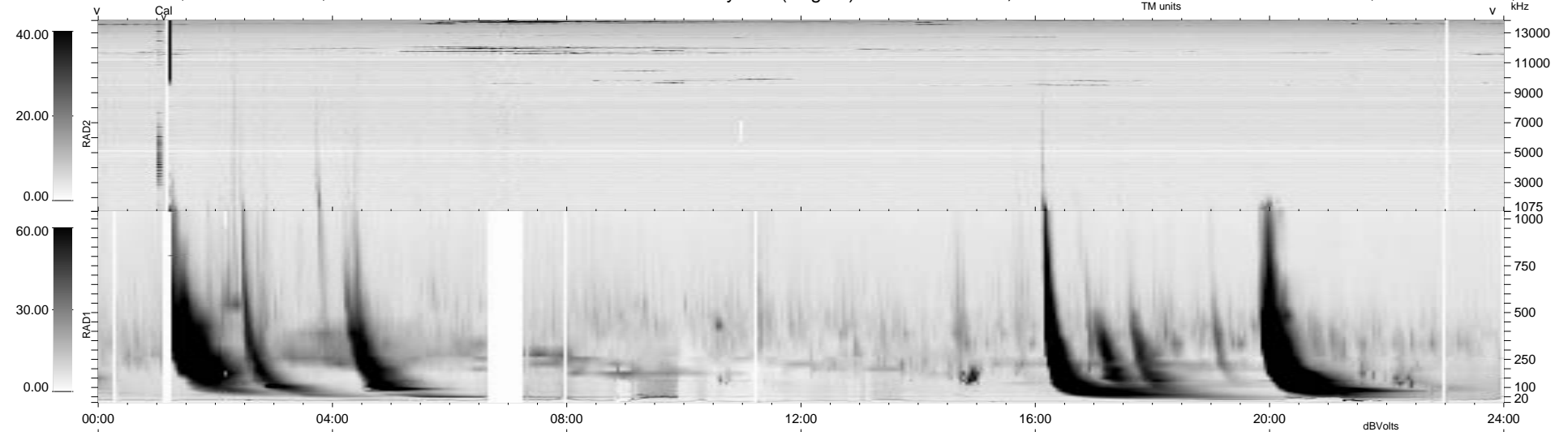


60 bad + 879 good MF/939MF projected (93%) - 0 missing MFs  
 Avg interval = 180 secs  
 Re = 223.04 (222.23, -13.40, 13.46 GSE)

1.7d VMS-SunOS LZ version = v01  
 DAILY Tue Sep 16, 2008  
 Re = 222.80 (221.97, -12.66, 14.43 GSE)

WIND/WAVES Summary Plot (Page 1) for 16-APR-1998, DOY = 106



RAD2  
 Antenna Ey .....  
 Mode LIN(1) .....  
 SUM/SEP SUM .....  
 Toggle OFF .....  
 RAD1  
 Antenna Ex .....  
 Mode LIS(2,3) .....  
 SUM/SEP SUM .....  
 Toggle OFF .....  
 TNR  
 Antenna ExEy .....  
 Mode A-32 .....  
 Sweep ABCDE .....