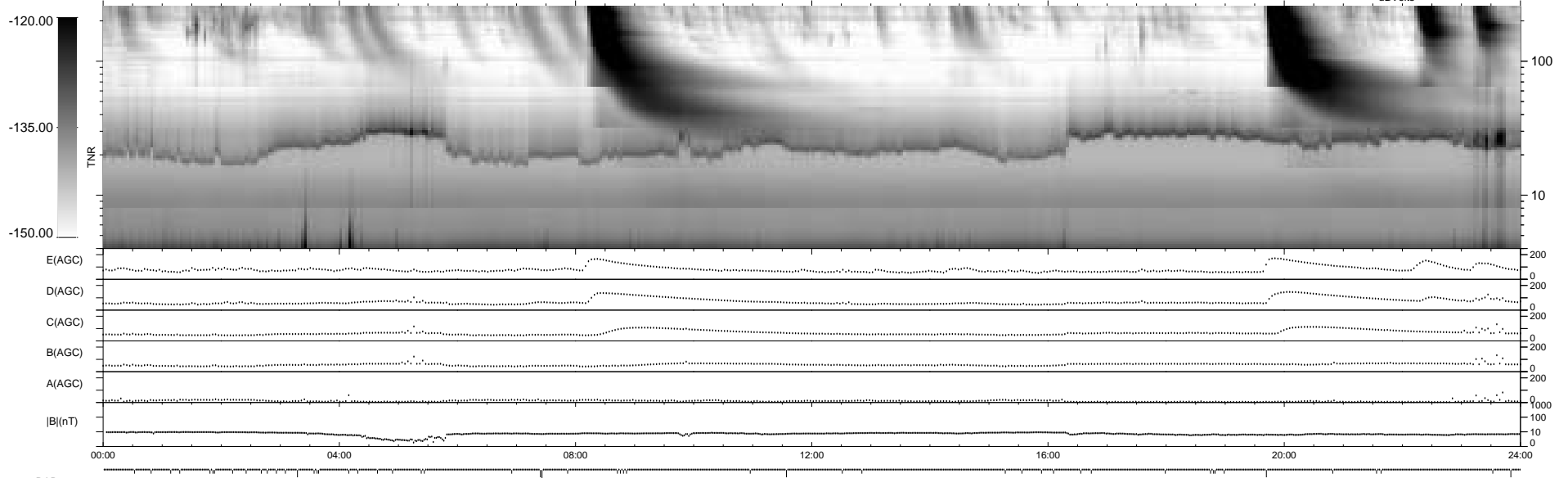
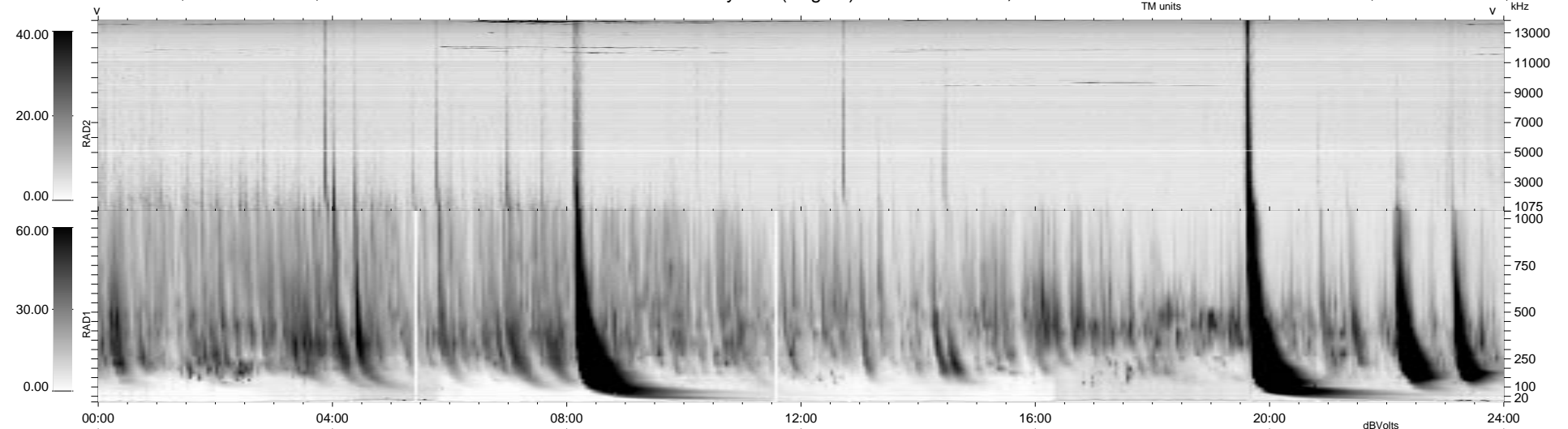


52 bad + 887 good MF/939MF projected (94%) - 0 missing MFs  
 Avg interval = 180 secs  
 Re = -225.37 (224.61, -17.45, 6.11 GSE)

1.7d VMS-SunOS LZ version = v01  
 DAILY Tue Sep 16, 2008  
 Re = 224.96 (224.21, -16.96, 7.19 GSE)

WIND/WAVES Summary Plot (Page 1) for 09-APR-1998, DOY = 99



RAD2  
 Antenna Ey  
 Mode LIN(1)  
 SUM/SEP SUM  
 Toggle OFF

RAD1  
 Antenna Ex  
 Mode LIS(2,3)  
 SUM/SEP SUM  
 Toggle OFF

TNR  
 Antenna ExEy  
 Mode A-32  
 Sweep ABCDE