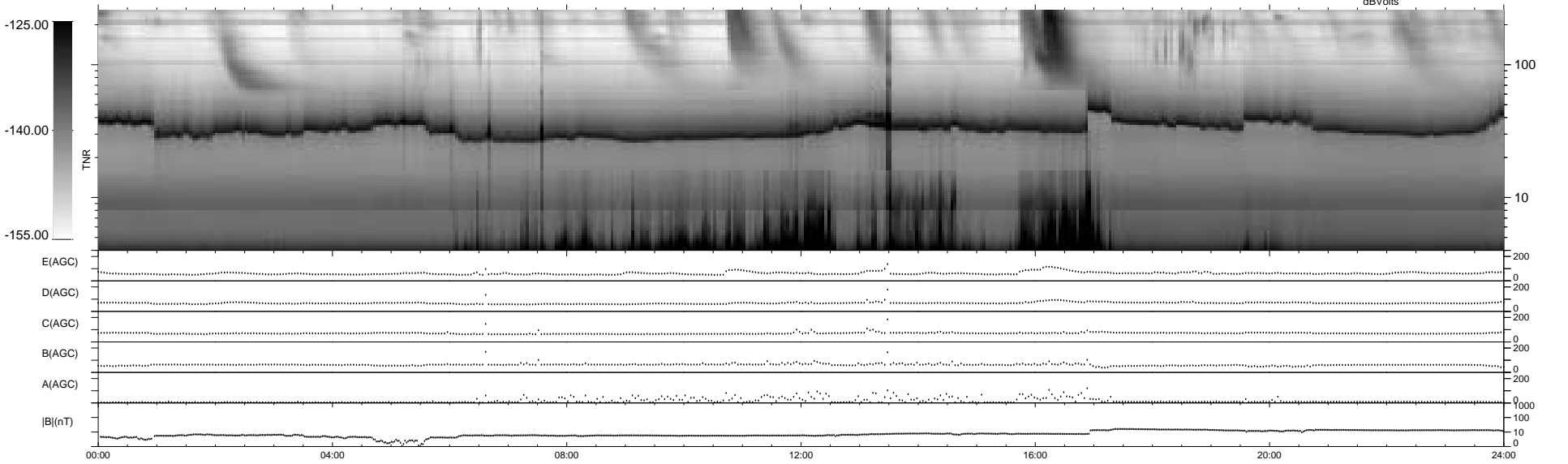
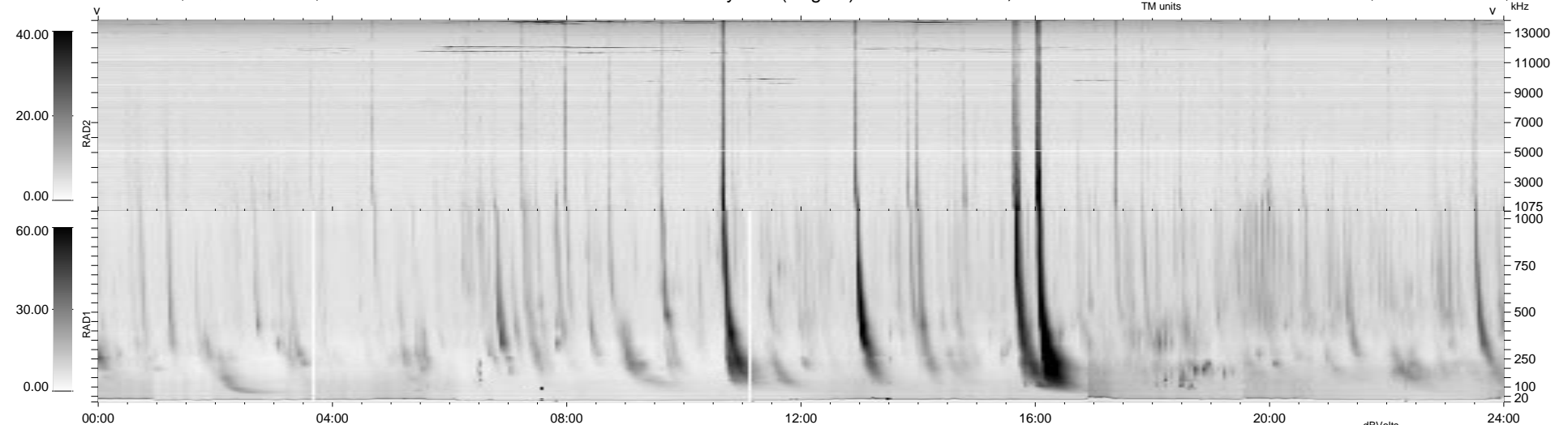


24 bad + 916 good MF/940MF projected (97%) - 0 missing MFs  
 Avg interval = 180 secs  
 Re = 226.26 (225.48, -18.39, 3.90 GSE)

1.7d VMS-SunOS LZ version = v01  
 DAILY Tue Sep 16, 2008  
 Re = 225.81 (225.04, -17.93, 5.00 GSE)

WIND/WAVES Summary Plot (Page 1) for 07-APR-1998, DOY = 97



RAD2  
 Antenna Ey  
 Mode LIN(1)  
 SUM/SEP SUM  
 Toggle OFF

RAD1  
 Antenna Ex  
 Mode LIS(2,3)  
 SUM/SEP SUM  
 Toggle OFF

TNR  
 Antenna ExEy  
 Mode A-32  
 Sweep ABCDE