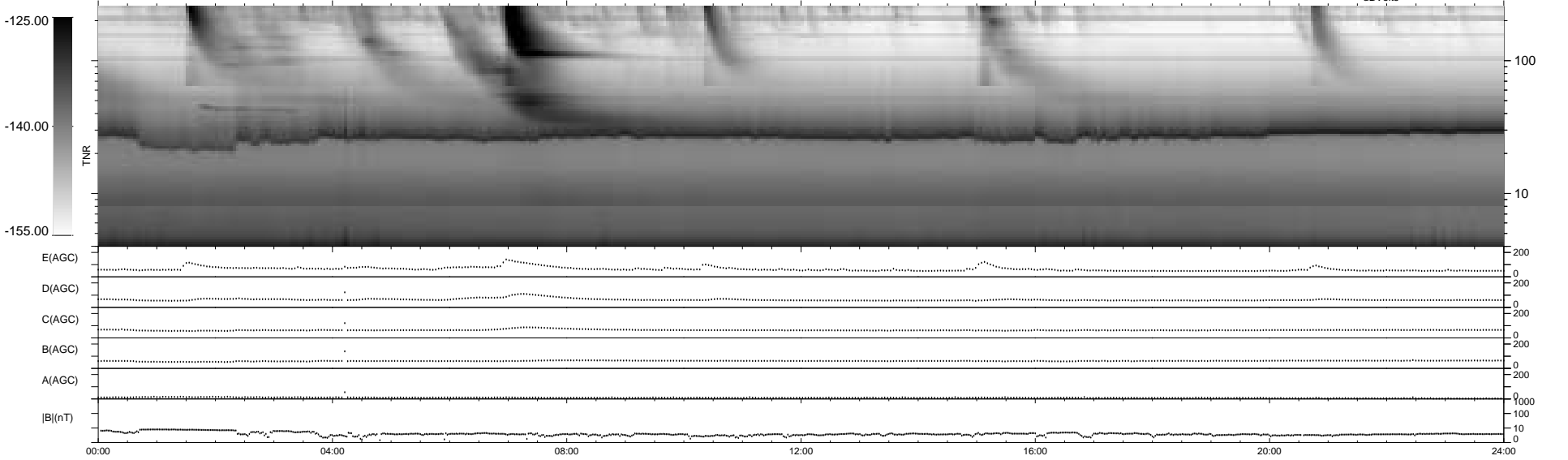
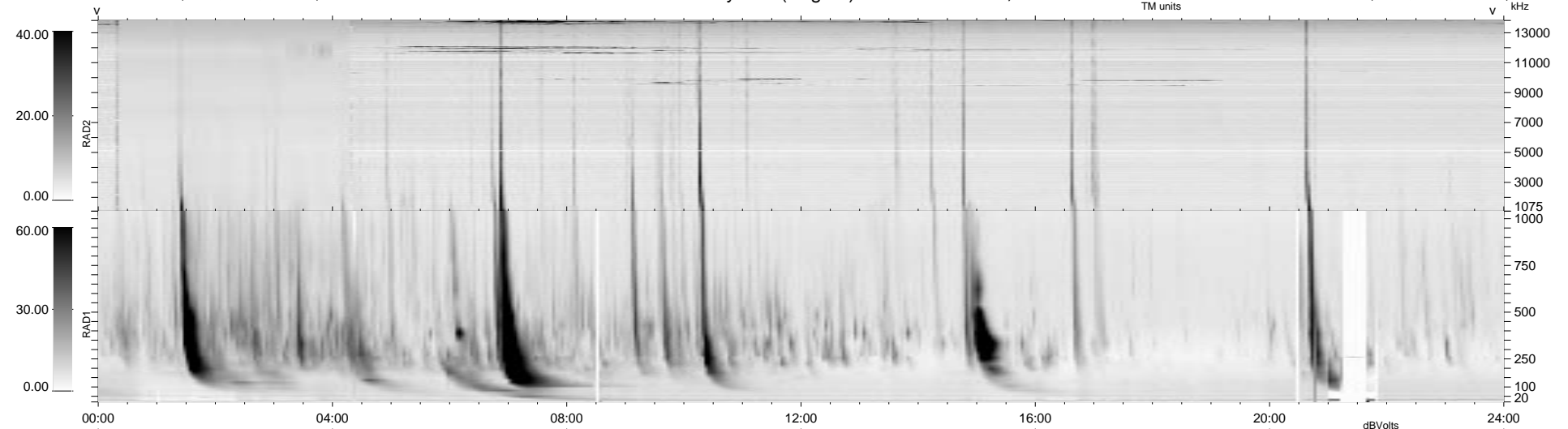


25 bad + 914 good MF/939MF projected (97%) - 0 missing MFs
 Avg interval = 180 secs
 Re = 227.23 (226.41, -19.29, 1.68 GSE)

1.7d VMS-SunOS LZ version = v01
 DAILY Tue Sep 16, 2008
 Re = 226.74 (225.94, -18.85, 2.79 GSE)

WIND/WAVES Summary Plot (Page 1) for 05-APR-1998, DOY = 95



```

RAD2
Antenna Ey
Mode LIN(1) LIN(9) LIN(1)
SUM/SEP SUM SEP SUM
Toggle OFF
RAD1
Antenna Ex
Mode LIS(2,3) FIX(6)SIS(2,3)
SUM/SEP SUM SEP SUM
Toggle OFF
TNR
Antenna ExEy
Mode A-32
Sweep ABCDE
  
```